

Deposited in the Land Title Office at Prince George this day of 1995.

REGISTRAR

PLAN OF SUBDIVISION OF LOT 39, PLAN 17833 AND CLOSED ROAD, DISTRICT LOT 745, CARIBOO DISTRICT.

B.C.G.S. 93G.087

Scale: 1 : 2000 (Distances are in metres)

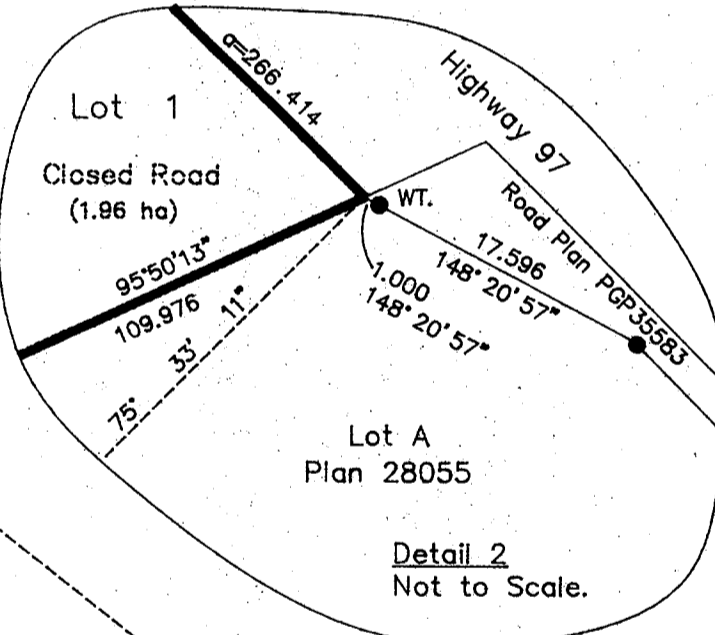
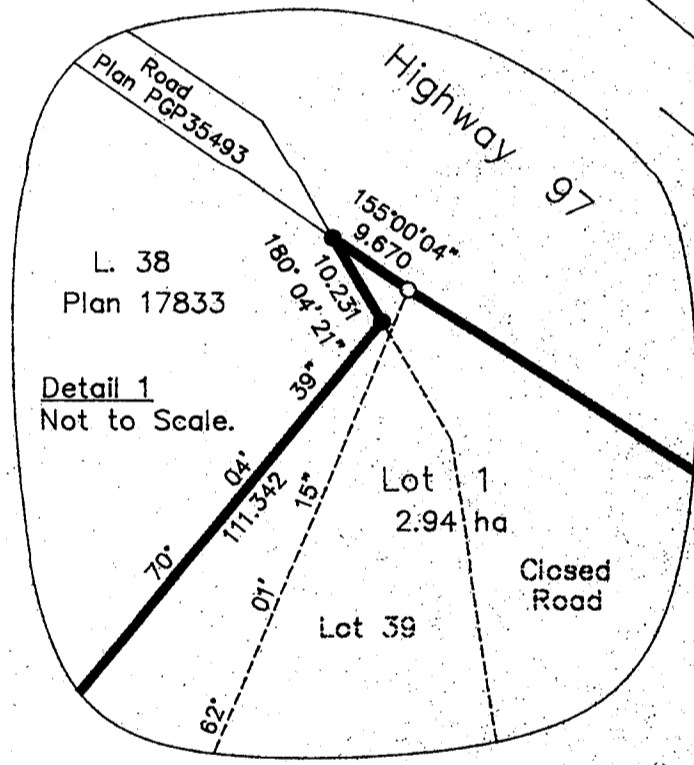
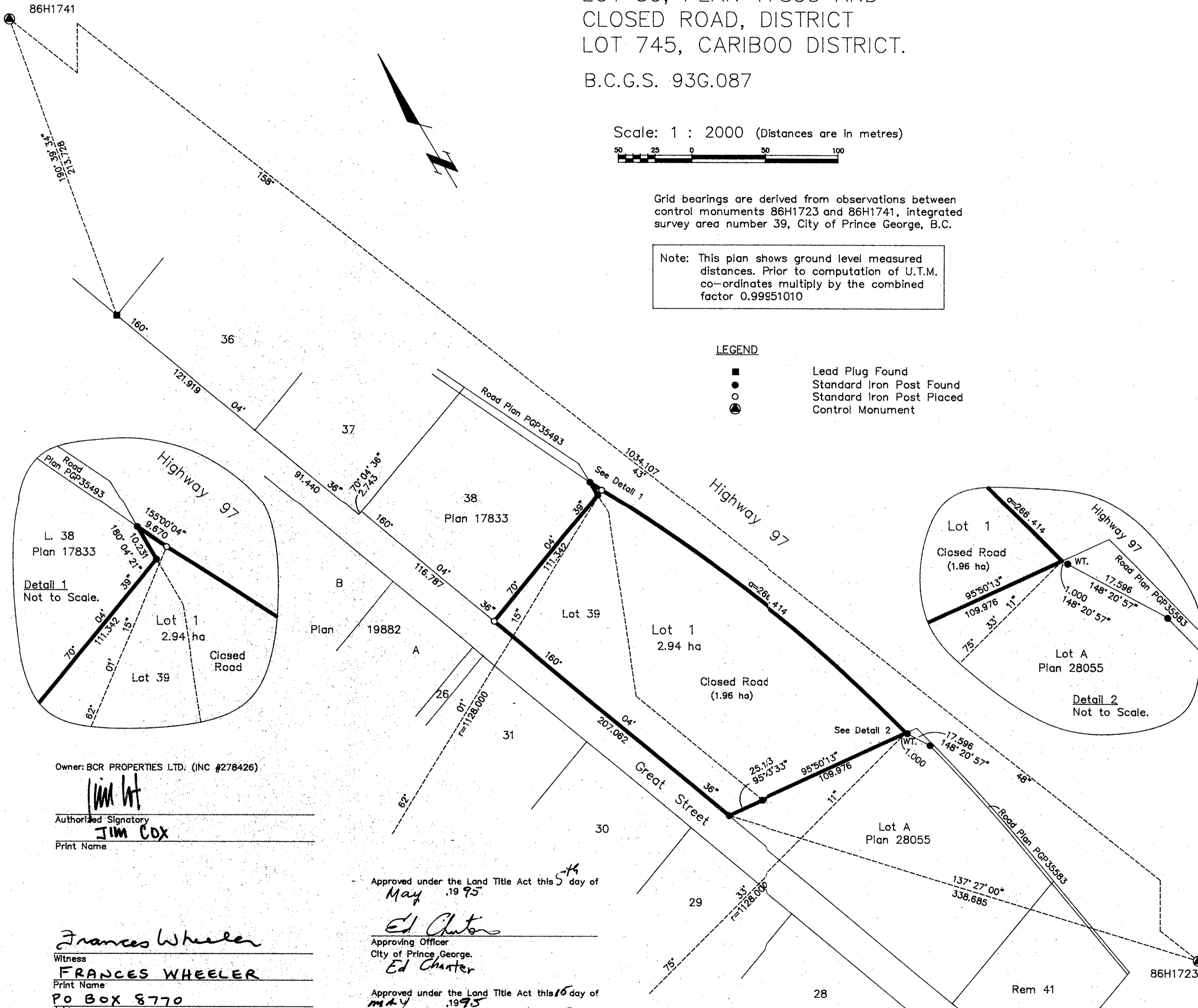


Grid bearings are derived from observations between control monuments 86H1723 and 86H1741, integrated survey area number 39, City of Prince George, B.C.

Note: This plan shows ground level measured distances. Prior to computation of U.T.M. co-ordinates multiply by the combined factor 0.99951010

LEGEND

- Lead Plug Found
- Standard Iron Post Found
- Standard Iron Post Placed
- ⊙ Control Monument



Owner: BCR PROPERTIES LTD. (INC #278426)

Jim Cox
 Authorized Signatory
JIM COX
 Print Name

Frances Wheeler
 Witness
FRANCES WHEELER
 Print Name
 PO BOX 8770
 Address
 VANCOUVER BC V6B4X6
 Postal Code
 Investment & Sales Administrator
 Occupation

Approved under the Land Title Act this 5th day of May, 1995

Ed Charter
 Approving Officer
 City of Prince George.
Ed Charter

Approved under the Land Title Act this 15 day of May, 1995

[Signature]
 Approving Officer
 Ministry of Transportation and Highways

Reviewed and verified correct.

ER. Dawson
 Supervisor of Legal Surveys

I, Gordon Kilbride, a British Columbia Land Surveyor of Prince George in British Columbia, certify that I was present at and personally superintended the survey represented by this plan and that the survey and plan are correct. The survey was completed on the 23 day of January, 1995.

Gordon Kilbride
 Gordon Kilbride, B.C.L.S.

This plan lies within the Fraser-Fort George Regional District.

KILBRIDE LAND SURVEYING LTD.
 British Columbia Land Surveyors
 Prince George, B.C.
 Ph: (604) 562-1196 Fax: 562-3656