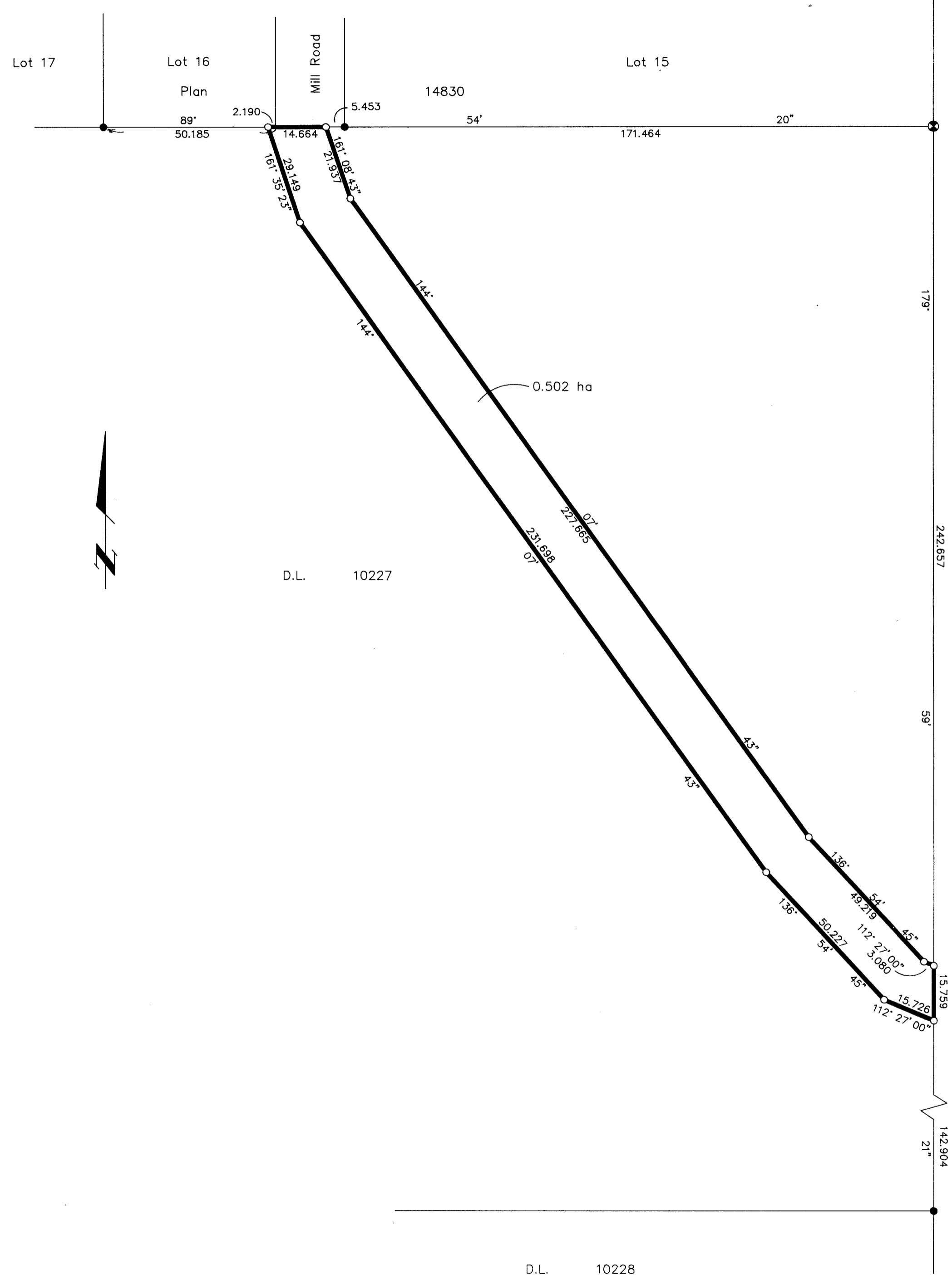


Deposited in the Land Title Office at Prince George this 28 day of *March* 1995.

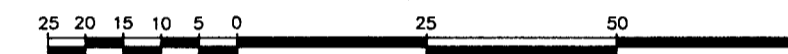
*SB*  
REGISTRAR



PLAN OF RIGHT OF WAY THROUGH  
DISTRICT LOT 10227, CARIBOO DISTRICT,  
PURSUANT TO SECTION 113 OF THE  
LAND TITLE ACT.

B.C.G.S. 93G.096

Scale: 1 : 1000 (Distances are in metres)



Bearings are astronomic, derived from Plan 14830.

LEGEND

- Standard Capped Post Found
- Standard Iron Post Found
- Standard Iron Post Placed

I, Gordon Kilbride, a British Columbia Land Surveyor of Prince George in British Columbia, certify that I was present at and personally supervised the survey represented by this plan and that the survey and plan are correct. The survey was completed on the 21st day of February, 1995.

*Gordon Kilbride*  
Gordon Kilbride, B.C.L.S.

This plan lies within the Fraser-Fort George Regional District.

KILBRIDE LAND SURVEYING LTD. British Columbia Land Surveyors Prince George, B.C. Ph: (604) 562-1196 Fax: 562-3656		
F.B.- UW23	D.L.- 10227	REF. NO.- 940946A