

PLAN OF SUBDIVISION OF REMAINDER OF
THE Fr. W 1/2 OF DISTRICT LOT 2101
CARIBOO DISTRICT

B.C.G.S. 93G.096

SCALE = 1 : 1250
DISTANCES ARE SHOWN IN METRES.

THIS PLAN SHOWS GROUND-LEVEL MEASURED DISTANCES.
PRIOR TO COMPUTATION OF U.T.M. COORDINATES, MULTIPLY
BY COMBINED FACTOR 0.99950651.

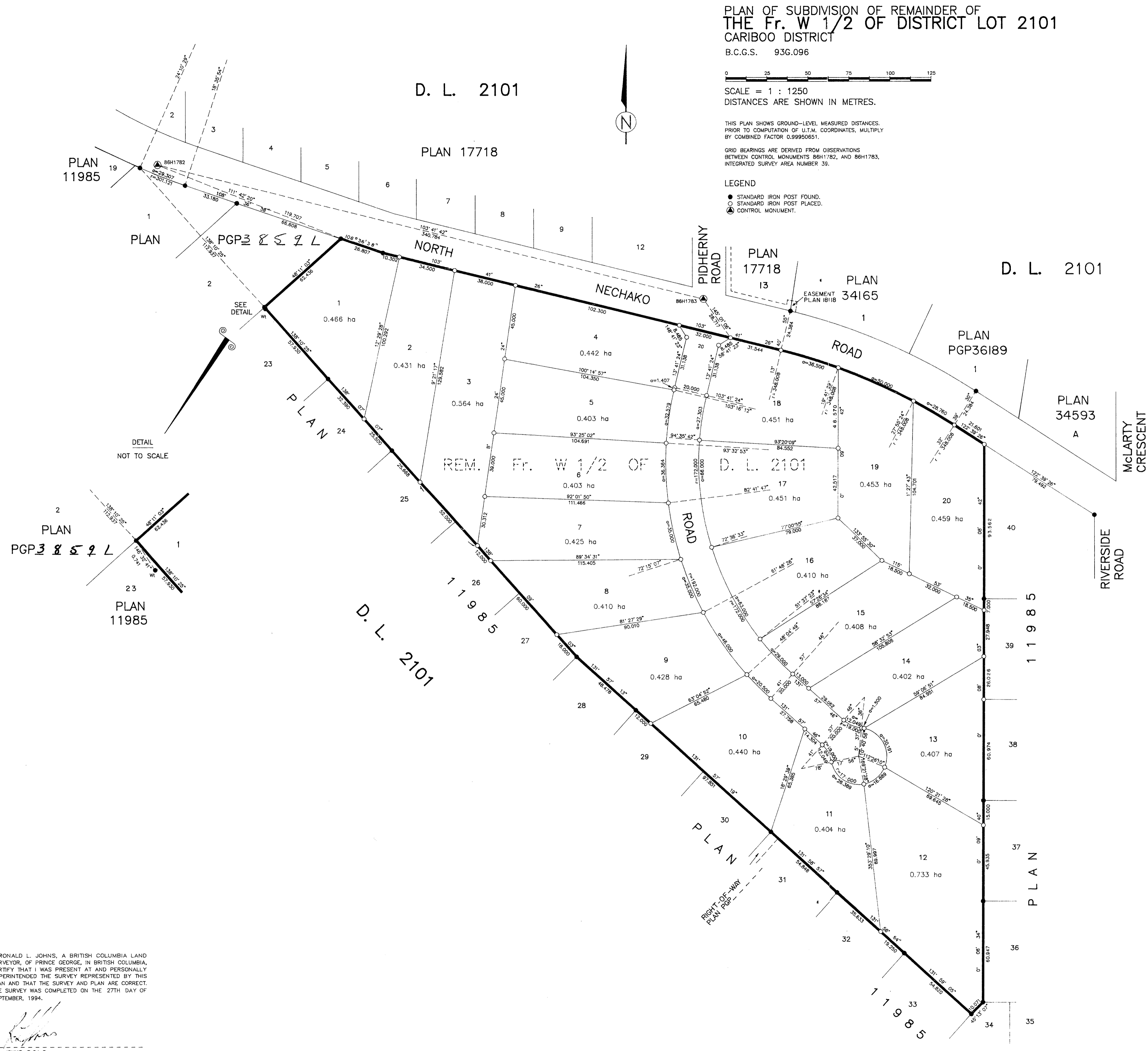
GRID BEARINGS ARE DERIVED FROM OBSERVATIONS
BETWEEN CONTROL MONUMENTS 86H1782, AND 86H1783,
INTEGRATED SURVEY AREA NUMBER 39.

LEGEND
● STANDARD IRON POST FOUND.
○ STANDARD IRON POST PLACED.
▲ CONTROL MONUMENT.

PLAN No. PGP - 38708

DEPOSITED IN THE LAND TITLE OFFICE
AT PRINCE GEORGE, B.C., THIS 19
DAY OF March, 1995

REGISTRAR



MYA'DVIC CONSTRUCTION LTD.
AUTHORIZED SIGNATORY
J. Mya'dvic
PRINT NAME

WITNESS
RONALD JOHN
PRINT NAME
40 VICTORIA STREET
ADDRESS
PRINCE GEORGE, B.C.
OCCUPATION
B.C. LAND SURVEYOR

BANK OF MONTREAL
AUTHORIZED SIGNATORY
Account Manager
PRINT NAME
AUTHORIZED SIGNATORY
PRINT NAME
WITNESS (AS TO BOTH SIGNATURES)
PRINT NAME
ADDRESS
OCCUPATION

APPROVED UNDER THE LAND TITLE ACT
THIS 19th DAY OF March, 1995

APPROVING OFFICER, CITY OF PRINCE GEORGE.

THIS PLAN LIES WITHIN THE FRASER-FORT GEORGE REGIONAL DISTRICT.

R. L. JOHN'S LAND SURVEYING LTD.
LEGAL AND ENGINEERING SURVEYS
240 VICTORIA STREET
PRINCE GEORGE, B.C. V2L 2J4
PHONE: (604) 562-5759
FAX: (604) 562-5703
94-50-S P2-12-28

I, RONALD L. JOHN'S, A BRITISH COLUMBIA LAND SURVEYOR, OF PRINCE GEORGE, IN BRITISH COLUMBIA, CERTIFY THAT I WAS PRESENT AT AND PERSONALLY SUPERINTENDED THE SURVEY REPRESENTED BY THIS PLAN AND THAT THE SURVEY AND PLAN ARE CORRECT. THE SURVEY WAS COMPLETED ON THE 27TH DAY OF SEPTEMBER, 1994.

R.L. JOHN'S, B.C.L.S.