

PLAN OF SUBDIVISION OF PARTS OF
 LOTS 4 AND 5, PLAN 8970
 DISTRICT LOT 4048
 CARIBOO DISTRICT

B.C.G.S. 93G.096 & 93G.097



SCALE = 1 : 1250
 DISTANCES ARE SHOWN IN METRES.

THIS PLAN SHOWS GROUND-LEVEL MEASURED DISTANCES.
 PRIOR TO COMPUTATION OF U.T.M. COORDINATES, MULTIPLY
 BY COMBINED FACTOR 0.99948328.

GRID BEARINGS ARE DERIVED FROM OBSERVATIONS
 BETWEEN CONTROL MONUMENTS 86H1857 AND 86H1858,
 INTEGRATED SURVEY AREA NUMBER 39.

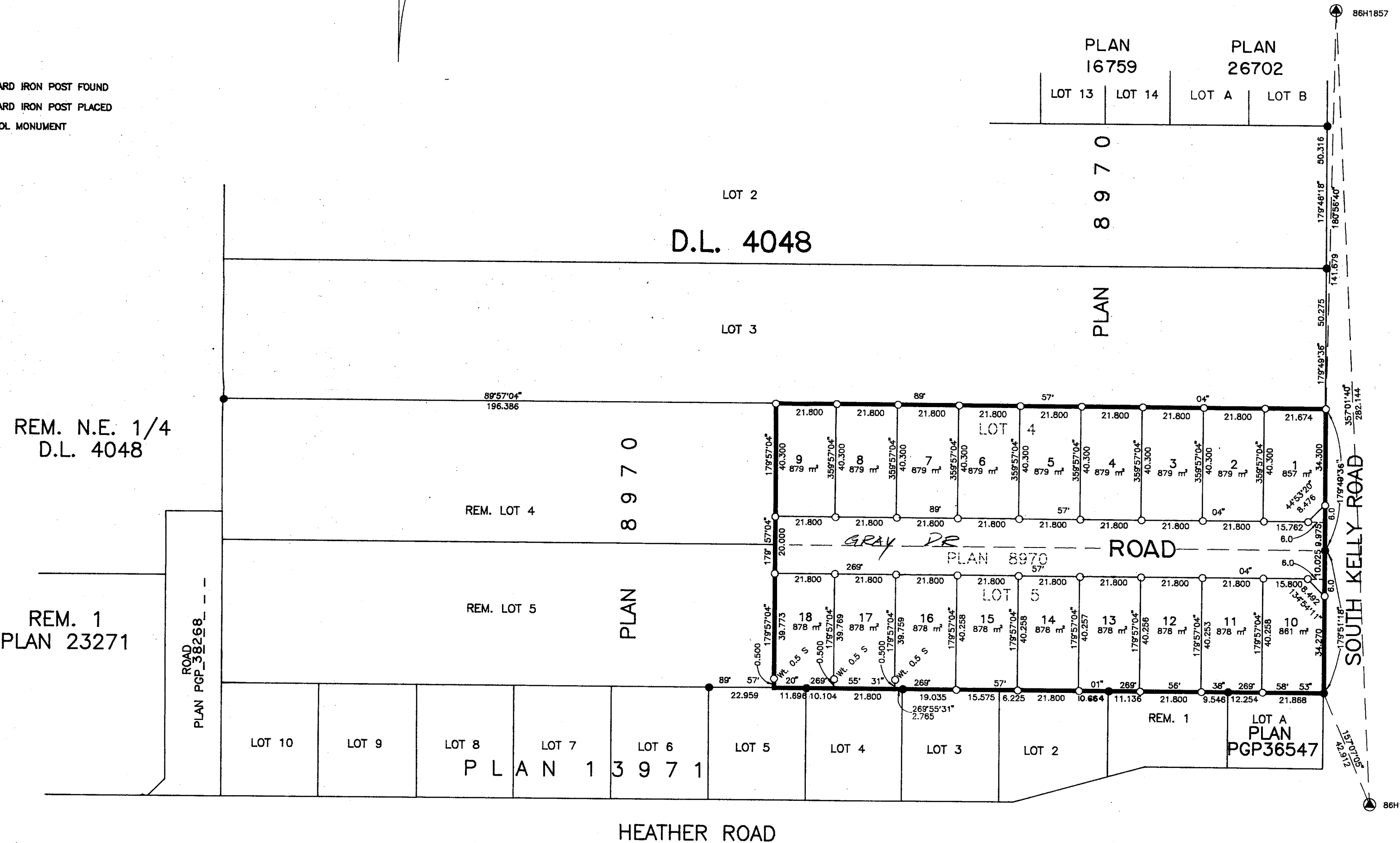
LEGEND

- STANDARD IRON POST FOUND
- STANDARD IRON POST PLACED
- ⊙ CONTROL MONUMENT

PLAN No. PGP 38602

DEPOSITED IN THE LAND TITLE OFFICE
 AT PRINCE GEORGE, B.C., THIS 01
 DAY OF FEBRUARY, 1995

REGISTRAR *[Signature]*



REM. N.E. 1/4
 D.L. 4048

REM. 1
 PLAN 23271

NEW CENTURY ENTERPRISES LTD.
 AUTHORIZED SIGNATORY *[Signature]*
 PRINT NAME *GORDON LAWRENCE*

WITNESS *[Signature]*
 PRINT NAME *R.L. JOHNS*
 ADDRESS *240 VICTORIA STREET*
PRINCE GEORGE, B.C.
 OCCUPATION *B.C. LAND SURVEYOR*

APPROVED UNDER THE LAND TITLE ACT
 THIS 24 DAY OF JANUARY, 1995

APPROVING OFFICER, CITY OF PRINCE GEORGE. *[Signature]*

I, RONALD L. JOHNS, A BRITISH COLUMBIA LAND SURVEYOR, OF PRINCE GEORGE, IN BRITISH COLUMBIA, CERTIFY THAT I WAS PRESENT AT AND PERSONALLY SUPERINTENDED THE SURVEY REPRESENTED BY THIS PLAN AND THAT THE SURVEY AND PLAN ARE CORRECT. THE SURVEY WAS COMPLETED ON THE 17TH DAY OF OCTOBER, 1994.

[Signature]
 R.L. JOHNS, B.C.L.S.

ROYAL BANK OF CANADA

AUTHORIZED SIGNATORY *[Signature]*
 PRINT NAME *Steve Cowie*

AUTHORIZED SIGNATORY *[Signature]*
 PRINT NAME *Marina Labar*

WITNESS (AS TO BOTH SIGNATURES) *[Signature]*
 PRINT NAME *DARINA J. DERRICKLAND*
 ADDRESS *ROYAL BANK OF CANADA*
550 VICTORIA ST.
PRINCE GEORGE, B.C.
V2L 4W1
 OCCUPATION *BANK CLERK*

THIS PLAN LIES WITHIN THE FRASER-FORT GEORGE REGIONAL DISTRICT.

R. L. JOHNS LAND SURVEYING LTD.
 LEGAL AND ENGINEERING SURVEYS
 240 VICTORIA STREET
 PRINCE GEORGE, B. C. V2L 2J4
 PHONE: (804)562-5759
 FAX: (804)562-5703