

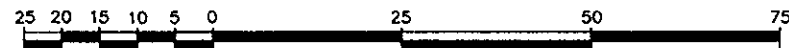
PLAN OF SUBDIVISION OF LOT 15,  
PLAN 10486, DISTRICT LOT 754,  
CARIBOO DISTRICT.

PLAN NO. PGP 38530

Deposited in the Land Title Office at Prince  
George this 23 day of December 1994.

B.C.G.S. 93G.087

Scale: 1 : 1000 (Distances are in metres)

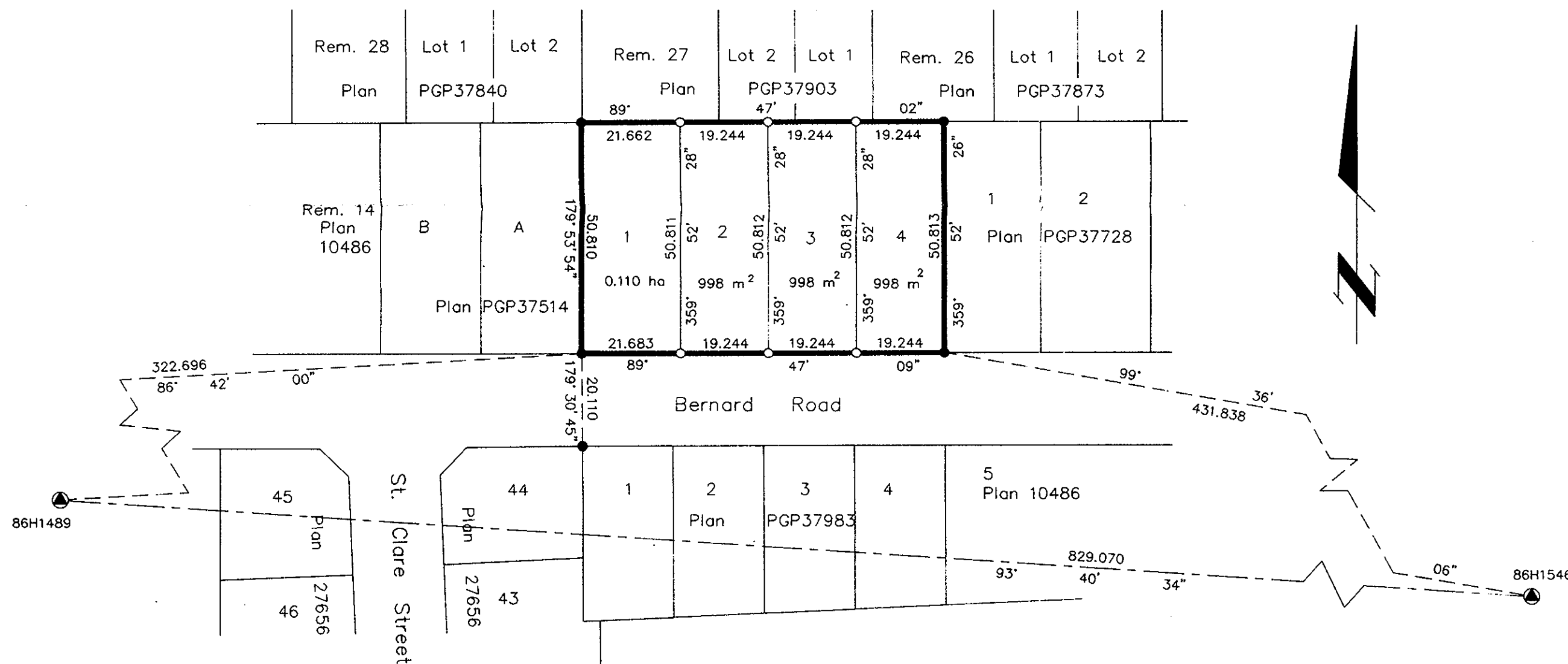


Note: This plan shows ground level measured  
distances. Prior to computation of U.T.M.  
co-ordinates multiply by the combined  
factor 0.99950336

Grid bearings are derived from observations between  
control monuments 86H1489 and 86H1546, integrated  
survey area number 39, City of Prince George, B.C.

LEGEND

- Standard Iron Post Found
- Standard Iron Post Placed
- ▲ Control Monument



i, Gordon Kilbride, a British Columbia Land Surveyor of  
Prince George in British Columbia, certify that I was  
present at and personally superintended the survey  
represented by this plan and that the survey and plan  
are correct. The survey was completed on the 12 day  
of May, 1994.

*Gordon Kilbride*  
Gordon Kilbride, B.C.L.S.

This plan lies within the Fraser-Fort  
George Regional District.

Owner: *Maria Matilda Federucci*  
Maria Matilda Federucci  
Witness: *Ida Martin*  
Ida Martin  
Print Name: *3656 Hesse Pl.*  
Address: *Prince George B.C. V2N4T9*  
Postal Code: *Housewife*  
Occupation:

Approved under the Land Title Act this 20 day of  
*December*, 1994  
*[Signature]*  
Approving Officer  
City of Prince George

KILBRIDE LAND SURVEYING LTD.  
British Columbia Land Surveyors  
Prince George, B.C.  
Ph: (604) 562-1196 Fax: 562-3656  
F.B.- UK 3 D.L.- 754 REF. NO.-940333