

REFERENCE PLAN OF STATUTORY
RIGHT OF WAY IN LOT 20,
PLAN 7787, DISTRICT LOT, 913,
CARIBOO DISTRICT.

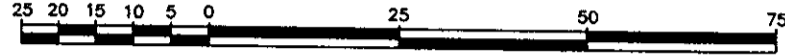
PLAN NO. PGP 38279

Deposited in the Land Title Office at Prince
George this 22 day of Sept. 1994.

BB'
REGISTRAR

B.C.G.S. 93G.087

Scale: 1 : 1000 (Distances are in metres)

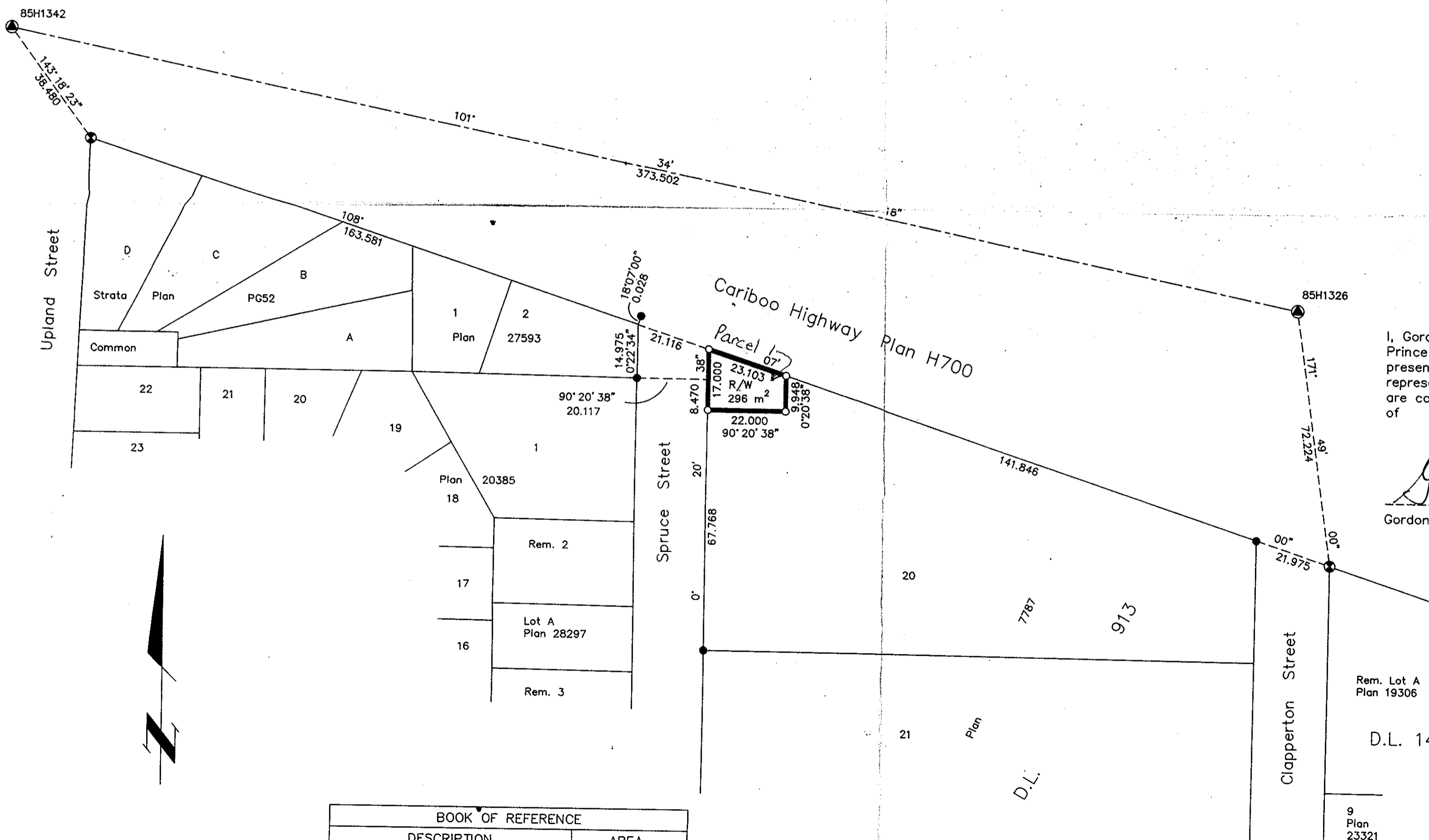


Note: This plan shows ground level measured distances. Prior to computation of U.T.M. co-ordinates multiply by the combined factor 0.99951098

LEGEND

- Standard Capped Post Found
- Standard Iron Post Found
- Standard Iron Post Placed
- ▲ Control Monument

Grid bearings are derived from observations between control monuments 85H1342 and 85H1326, integrated survey area number 39, City of Prince George, B.C.



I, Gordon Kilbride, a British Columbia Land Surveyor of Prince George in British Columbia, certify that I was present at and personally superintended the survey represented by this plan and that the survey and plan are correct. The survey was completed on the 5 day of August, 1994.

Gordon Kilbride
Gordon Kilbride, B.C.L.S.

BOOK OF REFERENCE	
DESCRIPTION	AREA
Lot 20, Plan 7787	296 m ²

Rem. Lot A
Plan 19306

D.L. 1426

9
Plan
23321

This plan lies within the Fraser-Fort
George Regional District.

KILBRIDE LAND SURVEYING LTD. British Columbia Land Surveyors Prince George, B.C. Ph: (604) 562-1196 Fax: 562-3656		
F.B.- RA	D.L.- 913	REF. NO.- 940639