

Deposited in the Land Title Office at Prince George this 07 day of Sept. 1994

B.B.  
REGISTRAR

PLAN OF SUBDIVISION OF PART OF  
REMAINDER OF LOT 1, PLAN PGP36193,  
DISTRICT LOT 2003, CARIBOO DISTRICT.

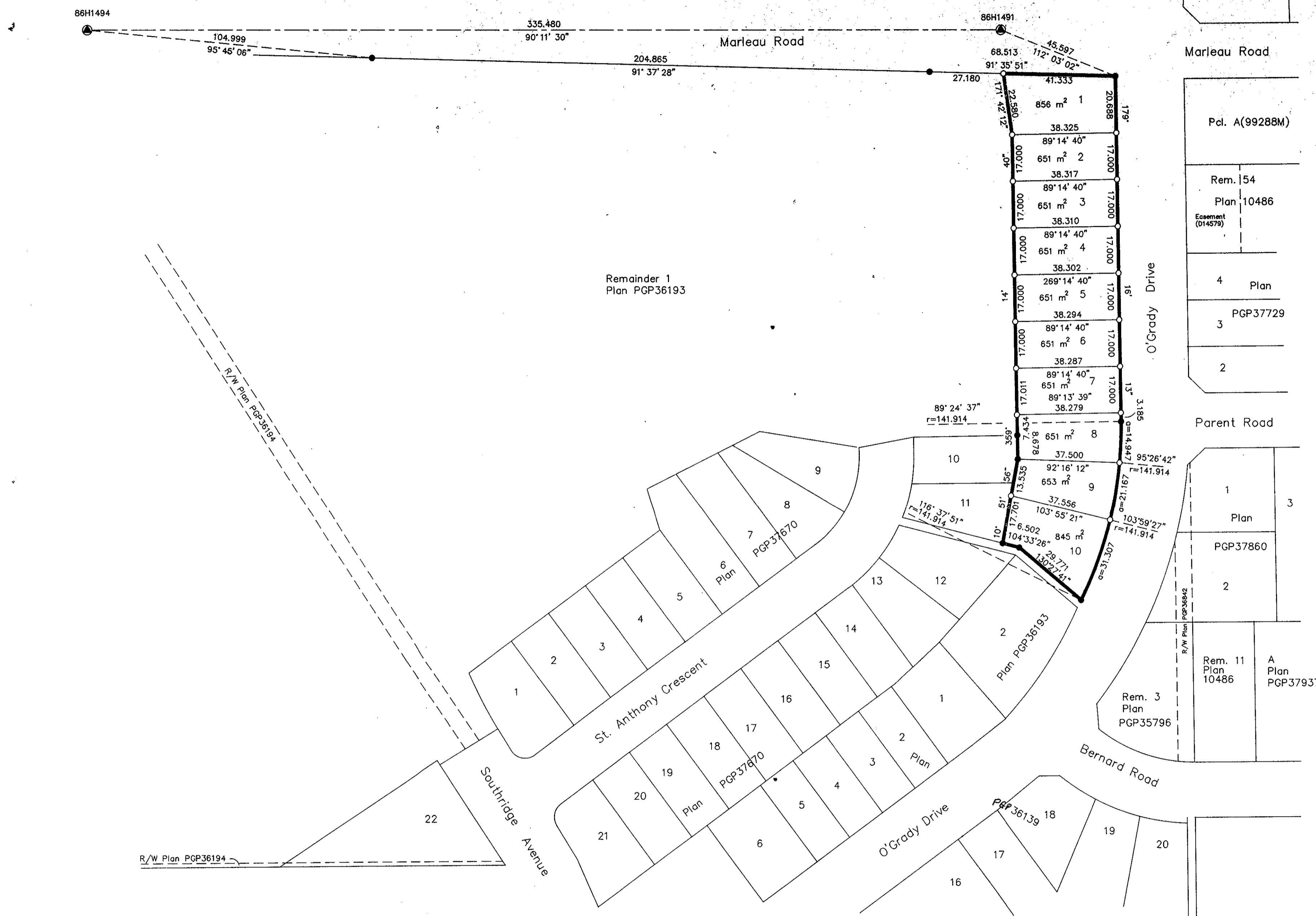
B.C.G.S. 936.087

Scale: 1 : 1000 (Distances are in metres)

Note: This plan shows ground level measured distances. Prior to computation of U.T.M. co-ordinates multiply by the combined factor 0.99949886

Grid bearings are derived from observations between control monuments 86H1494 and 86H1491, integrated survey area number 39, City of Prince George, B.C.

LEGEND  
● Standard Iron Post Found  
○ Standard Iron Post Placed  
⊙ Control Monument



Owner: Rem Lot 1, Plan PGP36193  
416358 British Columbia Ltd. Inc. #416358  
Tony Zwiers

Gordon Kilbride  
Gordon Kilbride  
324 Vancouver St  
Prince George V2L 2N9  
BC Land Surveyor

Owner: Mortgage PG3885A  
The Bank of Nova Scotia  
Howard J. Wager  
Authorized Signatory

Witness  
JOHN OUTHET  
1000 299 VICTORIA ST  
PRINCE GEORGE BC V2L 5B8  
SOLICITOR

I, Gordon Kilbride, a British Columbia Land Surveyor of Prince George in British Columbia, certify that I was present at and personally superintended the survey represented by this plan and that the survey and plan are correct. The survey was completed on the 11 day of August, 1994.

Gordon Kilbride  
Gordon Kilbride, B.C.L.S.

Approved under the Land Title Act this 19th day of August, 1994  
Wade Halliday  
City of Prince George

This plan lies within the Fraser-Fort George Regional District.

KILBRIDE LAND SURVEYING LTD.  
British Columbia Land Surveyors  
Prince George, B.C.  
Ph: (604) 562-1196 Fax: 562-3656  
F.B.- UG 32 D.L.- 2003 REF. NO.- 94013952