

641

PLAN OF SUBDIVISION OF PART OF  
REM. OF E. 1/2 OF S. 1/2  
DISTRICT LOT 1597  
CARIBOO DISTRICT

B.C.G.S. 93G.086  
0 20 40 60 80 100 120 140 160 180 200

SCALE = 1 : 2000  
DISTANCES ARE SHOWN IN METRES.

THIS PLAN SHOWS GROUND-LEVEL MEASURED DISTANCES.  
PRIOR TO COMPUTATION OF U.T.M. COORDINATES, MULTIPLY  
BY COMBINED FACTOR 0.99948254.

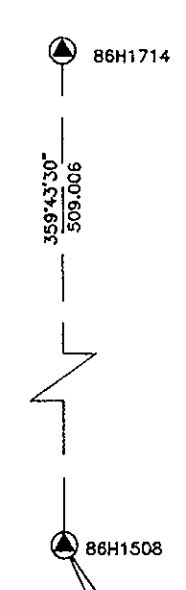
GRID BEARINGS ARE DERIVED FROM OBSERVATIONS  
BETWEEN CONTROL MONUMENTS 86H1714 AND 86H1506,  
INTEGRATED SURVEY AREA NUMBER 33.

- LEGEND
- STANDARD IRON POST FOUND
  - STANDARD IRON POST PLACED
  - ⊙ STANDARD CAPPED POST FOUND
  - ▲ CONTROL MONUMENT

PGP38198  
PLAN No. PGP

DEPOSITED IN THE LAND TITLE OFFICE  
AT PRINCE GEORGE, B.C., THIS 19  
DAY OF JULY, 1994

REGISTRAR BB



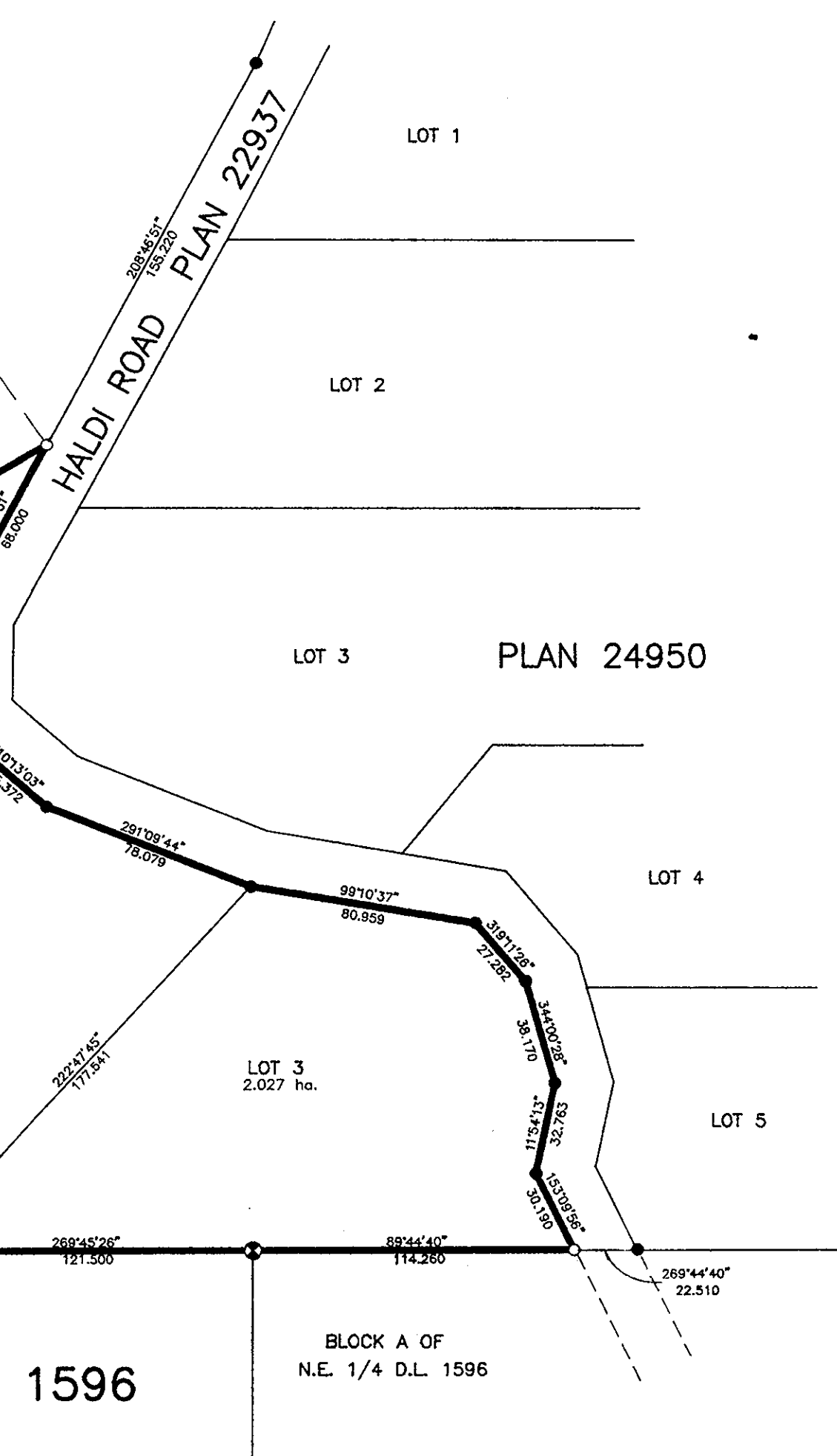
REM. E. 1/2 OF S. 1/2  
D.L. 1597

W. 1/2 OF S. 1/2  
D.L. 1597

N.W. 1/4  
D.L. 1596

REM. N.E. 1/4 D.L. 1596

BLOCK A OF  
N.E. 1/4 D.L. 1596



OWNER: CLYDE SMASLEY  
 WITNESS: R.L. Johns  
 PRINT NAME: RONALD L. JOHNS  
 ADDRESS: 240 VICTORIA STREET  
 PRINCE GEORGE, B.C.  
 OCCUPATION: B.C. LAND SURVEYOR

I, RONALD L. JOHNS, A BRITISH COLUMBIA LAND SURVEYOR, OF PRINCE GEORGE, IN BRITISH COLUMBIA, CERTIFY THAT I WAS PRESENT AT AND PERSONALLY SUPERINTENDED THE SURVEY REPRESENTED BY THIS PLAN AND THAT THE SURVEY AND PLAN ARE CORRECT. THE SURVEY WAS COMPLETED ON THE 2nd DAY OF AUGUST, 1994.

R.L. Johns  
 R.L. JOHNS, B.C.L.S.

APPROVED UNDER THE LAND TITLE ACT  
THIS DAY OF JULY, 1994

APPROVING OFFICER, CITY OF PRINCE GEORGE.

THIS PLAN LIES WITHIN THE FRASER-FORT GEORGE REGIONAL DISTRICT.

R. L. JOHNS LAND SURVEYING LTD.  
 LEGAL AND ENGINEERING SURVEYS  
 240 VICTORIA STREET  
 PRINCE GEORGE, B. C. V2L 2J4  
 PHONE: (604)562-5759  
 FAX: (604)562-5703