

PLAN OF SUBDIVISION OF
LOT 15, PLAN 11794,
DISTRICT LOT 1433,
CARIBOO DISTRICT.
B.C.G.S. 93G.087.

PLAN NO. PGP _____

Note: This plan shows ground level measured distances. Prior to computation of U.T.M. co-ordinates multiply by the combined factor 0.99950900

Deposited in the Land Title Office at Prince George this 26 day of July 1994

REGISTRAR *J.C.*

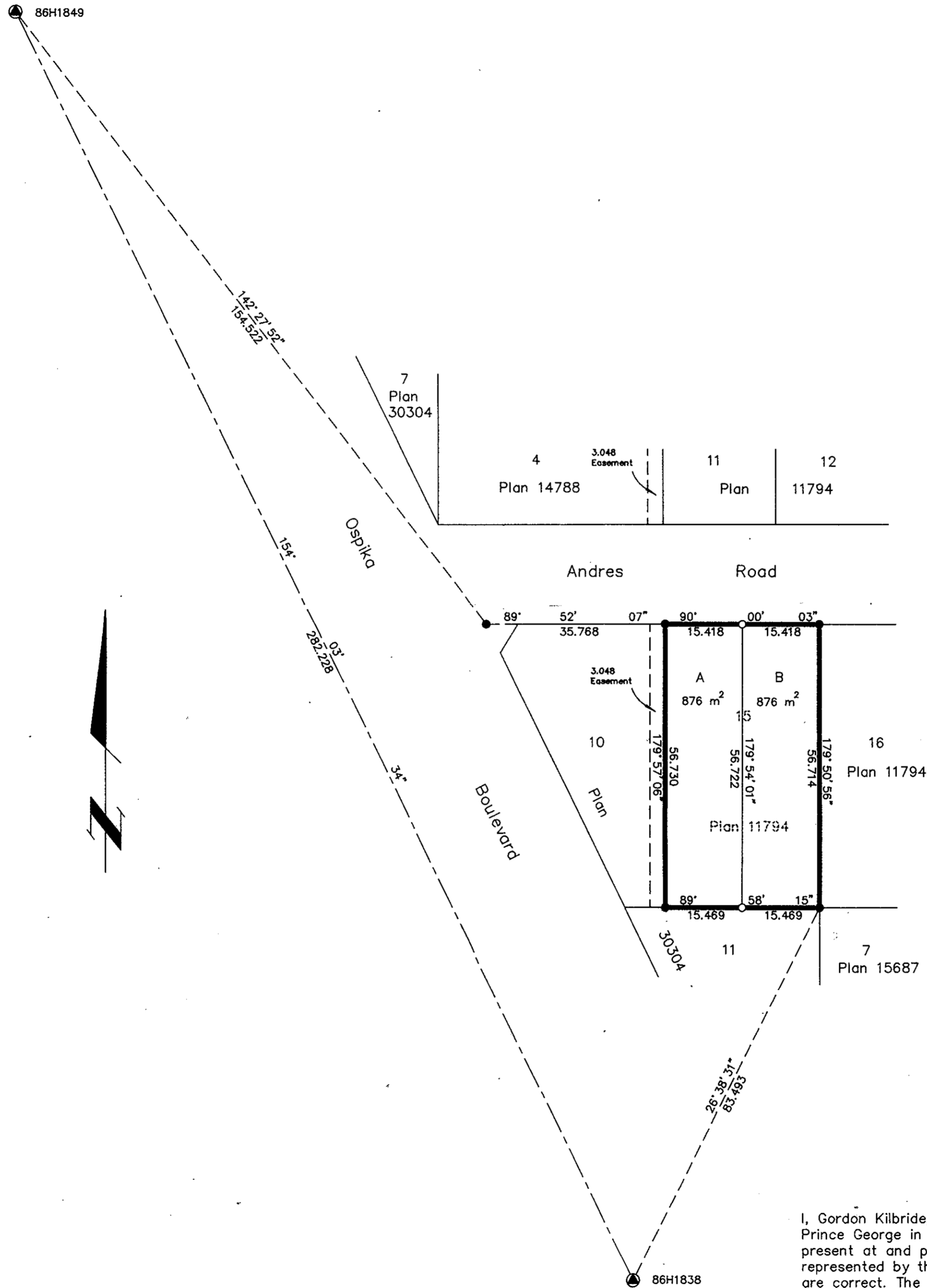
Grid bearings are derived from observations between control monuments 86H1838 and 86H1849, integrated survey area number 39, City of Prince George, B.C.

Scale: 1 : 750 (Distances are in metres)



LEGEND

- Standard Iron Post Found
- Standard Iron Post Placed
- ⊙ Control Monument



I, Gordon Kilbride, a British Columbia Land Surveyor of Prince George in British Columbia, certify that I was present at and personally superintended the survey represented by this plan and that the survey and plan are correct. The survey was completed on the 29 day of June, 1994.

Owner:

Gurmeet K Sidhu
 Gurmeet K Sidhu
Gordon Kilbride
 Witness
 Gordon Kilbride
 Print Name
 324 Vancouver St.
 Address
 Prince George, BC V2L 2N9
 Postal Code
 B.C. Land Surveyor
 Occupation

Gordon Kilbride
 Gordon Kilbride, B.C.L.S.

Approved under the Land Title Act this 8th day of JULY 1994

Quayle Halliday
 Approving Officer
 City of Prince George

This plan lies within the Fraser-Fort George Regional District.

KILBRIDE LAND SURVEYING LTD. British Columbia Land Surveyors Prince George, B.C. Ph: (604) 562-1196 Fax: 562-3656		
F.B.- UT 16	D.L.- 1433	REF. NO.- 940479