

JL/JM

PLAN No. PGP 38110

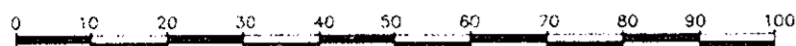
REFERENCE PLAN OF CONSOLIDATION OF
LOTS 1 TO 20 INCLUSIVE, BLOCK 42, PLAN 1268
AND ADJACENT CLOSED LANE, PLAN PGP35594

DEPOSITED IN THE LAND TITLE OFFICE
AT PRINCE GEORGE, B.C., THIS 12
DAY OF JULY 1994.

DISTRICT LOT 343
CARIBOO DISTRICT

REGISTRAR *WBA*

SCALE 1 : 1000 BCOS 936.097

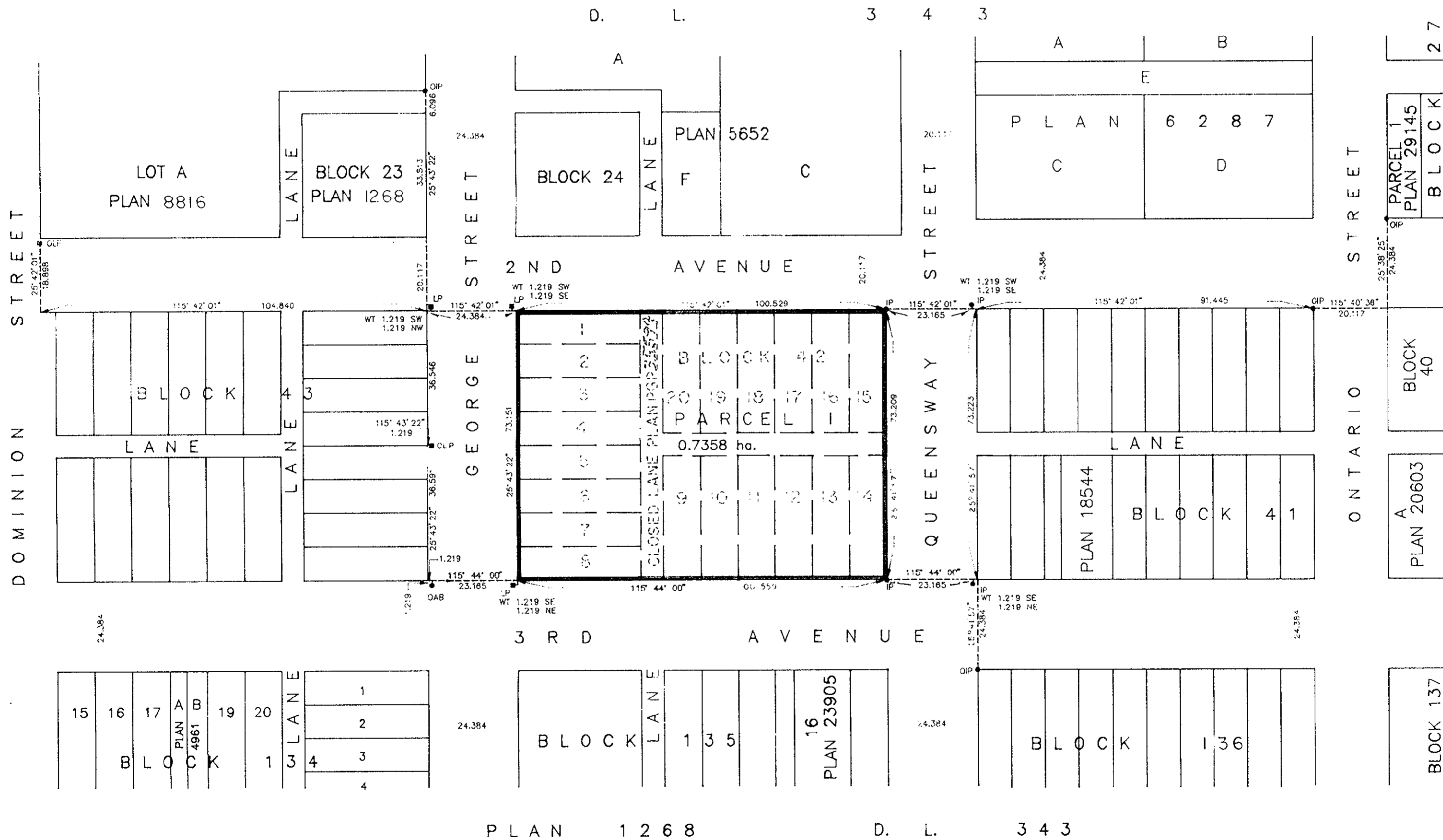


BEARINGS ARE ASTRONOMIC, DERIVED FROM THE NORTH
BOUNDARY OF THIRD AVENUE, PLAN 1268.

ALL DISTANCES ARE SHOWN IN METRES.

LEGEND

- OIP DENOTES AN OLD IRON PIN FOUND.
- IP DENOTES AN IRON PIN SET.
- OAB DENOTES AN OLD ALUMINUM BOLT FOUND.
- OLP DENOTES AN OLD LEAD PLUG FOUND.
- LP DENOTES A LEAD PLUG SET.
- WT DENOTES WITNESS.



I, RONALD L. JOHNS, A BRITISH COLUMBIA LAND
SURVEYOR, OF PRINCE GEORGE, IN BRITISH COLUMBIA,
CERTIFY THAT I WAS PRESENT AT AND PERSONALLY
SUPERINTENDED THE SURVEY REPRESENTED BY THIS
PLAN AND THAT THE SURVEY AND PLAN ARE CORRECT.
THE SURVEY WAS COMPLETED ON THE 4TH DAY OF
FEBRUARY, 1994.

R.L. Johns
R.L. JOHNS, B.C.L.S.

THIS PLAN LIES WITHIN THE FRASER-
FORT GEORGE REGIONAL DISTRICT.

R.L. JOHNS & ASSOCIATES
LEGAL AND ENGINEERING SURVEYS
P.O. BOX 824
PRINCE GEORGE, B.C. V2L 4V3
(604) 562-5759