

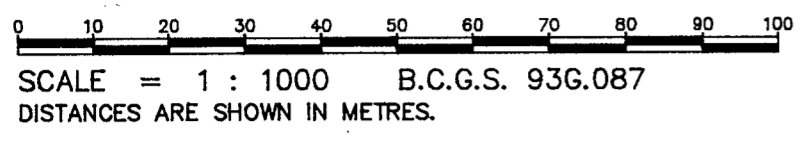
PLAN OF SUBDIVISION OF PART OF
 LOT 29, PLAN 10486
 DISTRICT LOT 754
 CARIBOO DISTRICT

38077

PLAN No. PGP -----

DEPOSITED IN THE LAND TITLE OFFICE
 AT PRINCE GEORGE, B.C., THIS 7
 DAY OF July, 19 94

W. Gk
 REGISTRAR



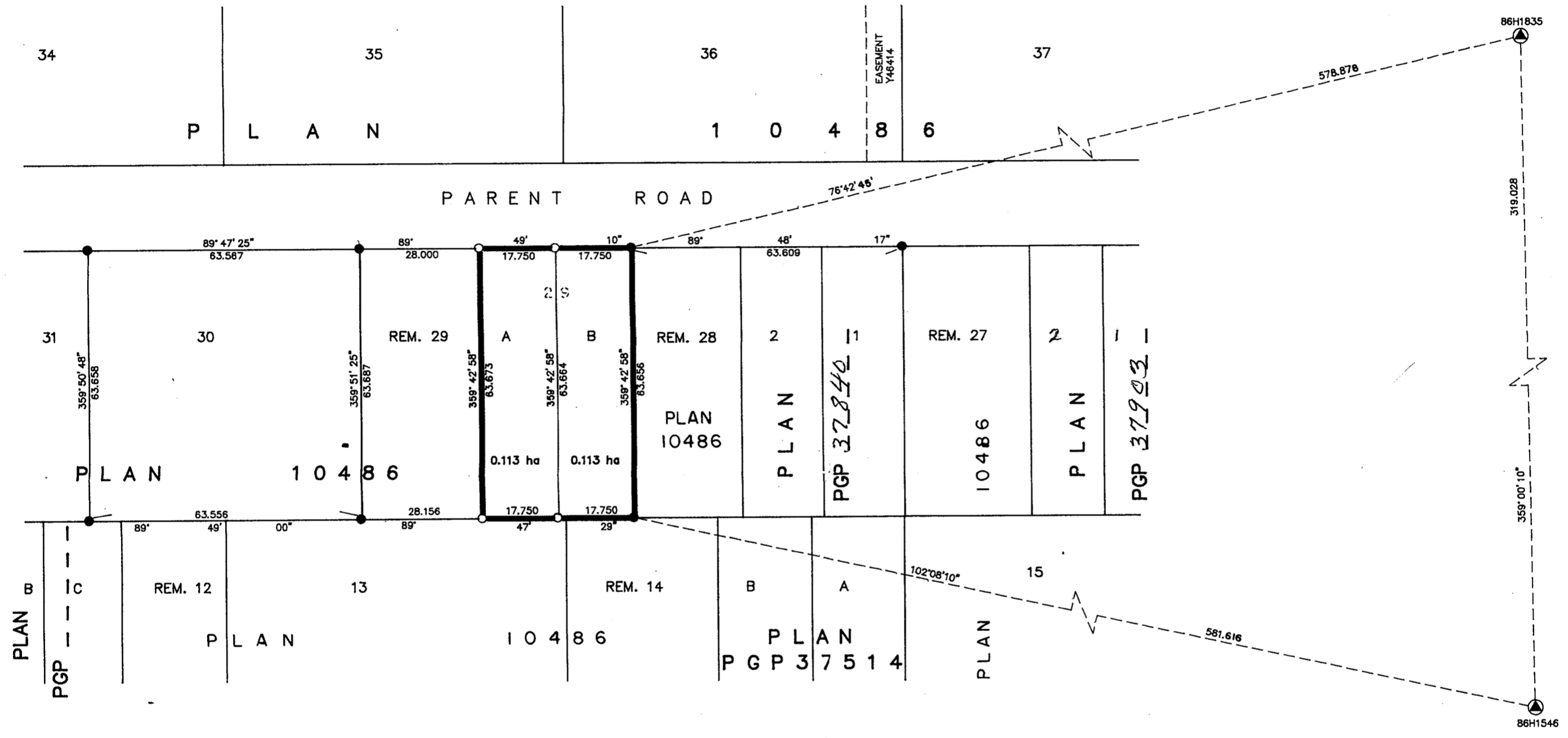
THIS PLAN SHOWS GROUND-LEVEL MEASURED DISTANCES.
 PRIOR TO COMPUTATION OF U.T.M. COORDINATES, MULTIPLY
 BY COMBINED FACTOR 0.9995105393.

GRID BEARINGS ARE DERIVED FROM OBSERVATIONS
 BETWEEN CONTROL MONUMENTS 86H1546, AND 86H1835,
 INTEGRATED SURVEY AREA NUMBER 39.

- LEGEND
- STANDARD IRON POST FOUND.
 - STANDARD IRON POST PLACED.
 - ⊙ CONTROL MONUMENT.



D. L. 754



OWNER OF CHARGE PE22165
 MONTREAL TRUST COMPANY OF CANADA
 REG. #A33102

 AUTHORIZED SIGNATORY

 PRINT NAME

 AUTHORIZED SIGNATORY

 PRINT NAME

 WITNESS (AS TO BOTH SIGNATURES)

 PRINT NAME

 ADDRESS

 OCCUPATION

APPROVED UNDER THE LAND TITLE ACT
 THIS 30th DAY OF June, 19 94

Quayle Halliday
 APPROVING OFFICER, CITY OF PRINCE GEORGE.

THIS PLAN LIES WITHIN THE FRASER-
 FORT GEORGE REGIONAL DISTRICT.

R. L. JOHNS & ASSOCIATES
 LEGAL AND ENGINEERING SURVEYS
 240 VICTORIA STREET
 PRINCE GEORGE, B. C. V2L 2J4
 PHONE: (604)562-5759
 FAX: (604)562-5703

I, RONALD L. JOHNS, A BRITISH COLUMBIA LAND
 SURVEYOR, OF PRINCE GEORGE, IN BRITISH COLUMBIA,
 CERTIFY THAT I WAS PRESENT AT AND PERSONALLY
 SUPERINTENDED THE SURVEY REPRESENTED BY THIS
 PLAN AND THAT THE SURVEY AND PLAN ARE CORRECT.
 THE SURVEY WAS COMPLETED ON THE 10th DAY OF
 DECEMBER, 1993.

R.L. Johns
 R.L. JOHNS, B.C.L.S.

OWNER: Nancy Marie Martell
 WITNESS: R. E. Shier, A.S.T.
420 VICTORIA STREET
PRINCE GEORGE, B.C.
LAND SURVEY TECHNOLOGIST