

Deposited in the Land Title Office at Prince George this 24 day of June 1994

POSTING PLAN OF PARCEL B (PG38010),
OF BLOCK 272, PLAN 1268,
DISTRICT LOT 343,
CARIBOO DISTRICT.

R.C.S. 936.097

Scale: 1 : 500 (Distances are in metres)

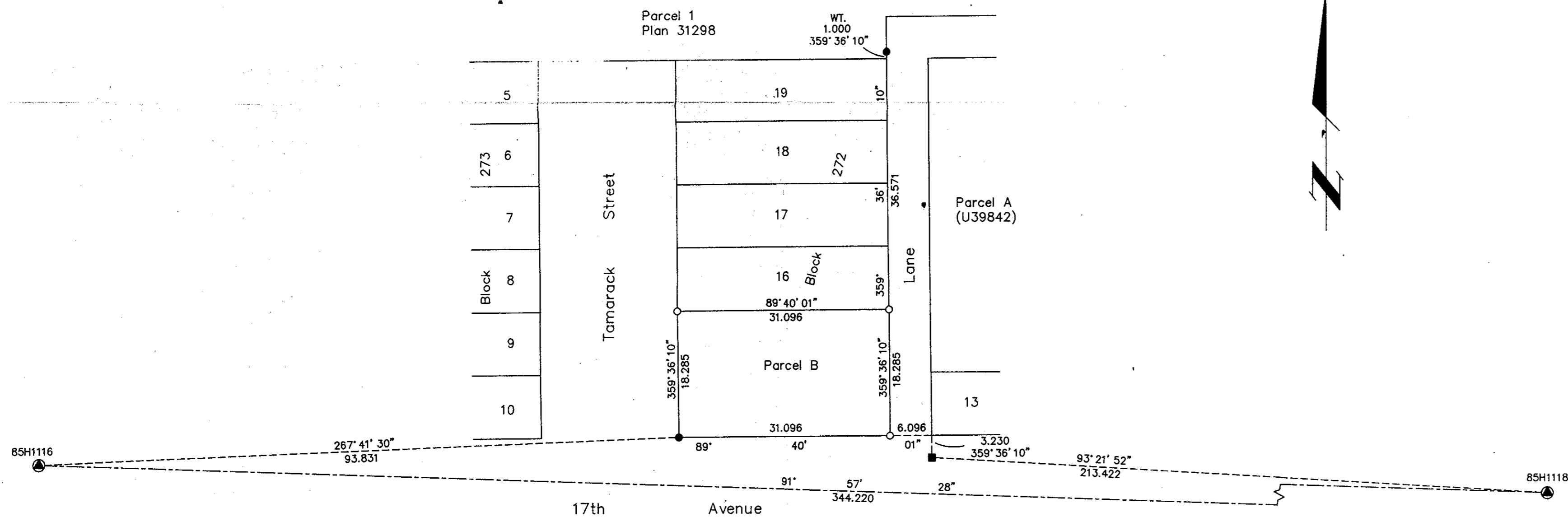


LEGEND

- Lead Plug Found
- Standard Iron Post Found
- Standard Iron Post Placed
- ⊙ Control Monument

Note: This plan shows ground level measured distances. Prior to computation of U.T.M. co-ordinates multiply by the combined factor 0.999513520

Grid bearings are derived from observations between control monuments 85H1116 and 85H1118, integrated survey area number 39, City of Prince George, B.C.



I, Gordon Kilbride, a British Columbia Land Surveyor of Prince George in British Columbia, certify that I was present at and personally superintended the survey represented by this plan and that the survey and plan are correct. The survey was completed on the 24th day of May, 1994.

Gordon Kilbride
Gordon Kilbride, B.C.L.S.

This plan lies within the Fraser-Fort George Regional District.

KILBRIDE LAND SURVEYING LTD.
British Columbia Land Surveyors
Prince George, B.C.
Ph: (604) 562-1196 Fax: 562-3656

F.B.- UO 02 D.L.- 343 REF. NO.- 940364