

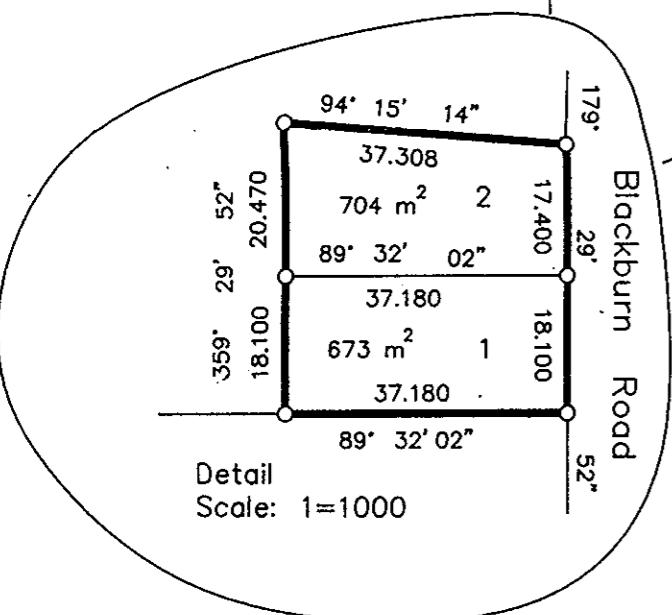
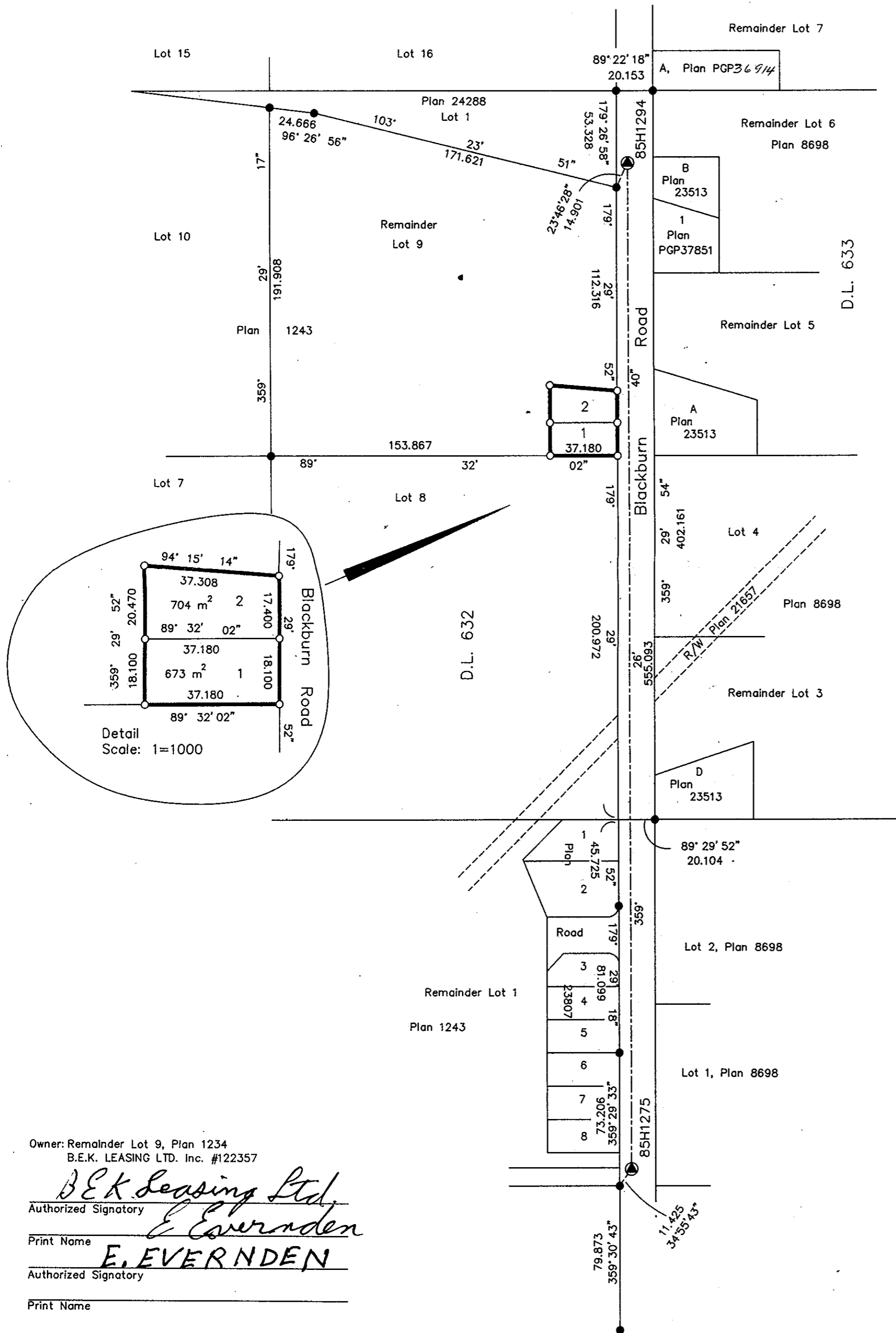
PLAN OF SUBDIVISION OF PART OF REMAINDER OF LOT 9, PLAN 1243, DISTRICT LOT 632, CARIBOO DISTRICT.

Deposited in the Land Title Office at Prince George this 25 day of May 1994

REGISTRAR

B.C.G.S.93G.097

Scale: 1 : 2000 (Distances are in metres)



LEGEND

- Standard Iron Post Found
- Standard Iron Post Placed
- ⊙ Control Monument

Note: This plan shows ground level measured distances. Prior to computation of U.T.M. co-ordinates multiply by the combined factor 0.99950143

Grid bearings are derived from observations between control monuments 85H1275 and 85H1294, integrated survey area number 39, City of Prince George, B.C.

LEGEND

- Standard Iron Post Found
- Standard Iron Post Placed
- ⊙ Control Monument

I, Gordon Kilbride, a British Columbia Land Surveyor of Prince George in British Columbia, certify that I was present at and personally supervised the survey represented by this plan and that the survey and plan are correct. The survey was completed on the 26 day of April, 1994.

Gordon Kilbride
Gordon Kilbride, B.C.L.S.

Owner: Remainder Lot 9, Plan 1234
B.E.K. LEASING LTD. Inc. #122357

Authorized Signatory
B.E.K. Leasing Ltd.
E. Evernden
Print Name
E. EVERNDEN
Authorized Signatory

Print Name
W. A. Morgan
Witness to both
WILBERT A. MORGAN
Print Name
WILBERT A. MORGAN
Address
896 HARPER ST
PRINCE GEORGE BC V2M 9A7
Postal Code
BETIMED
Occupation

Approved under the Land Title Act this 6 day of May 1994

George Halder
Approving Officer
City of Prince George

This plan lies within the Fraser-Fort George Regional District.

KILBRIDE LAND SURVEYING LTD.
British Columbia Land Surveyors
Prince George, B.C.
Ph: (604) 562-1196 Fax: 562-3656

F.B.- RA	D.L.- 632	REF. NO.-930474
----------	-----------	-----------------