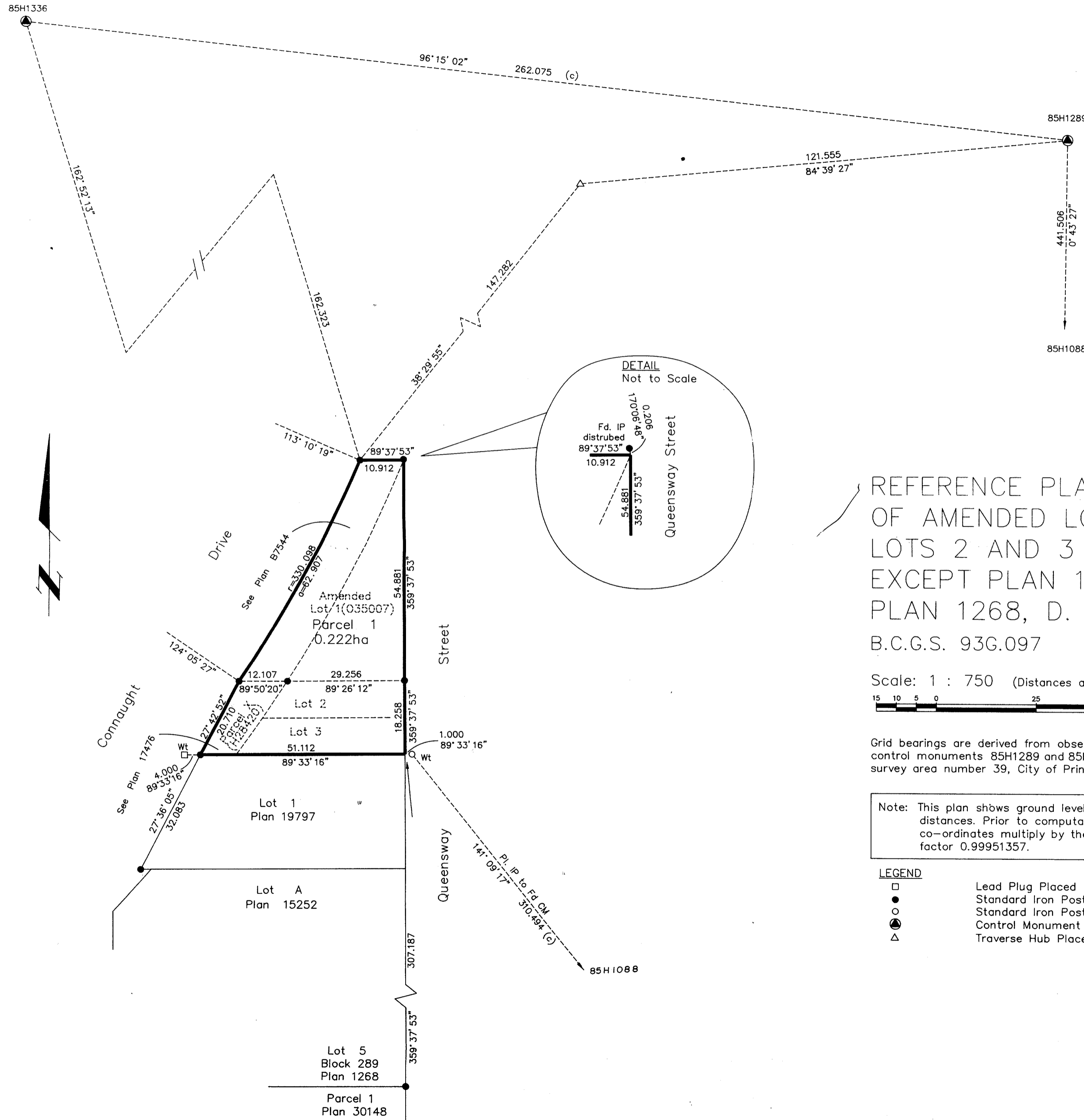


Deposited in the Land Title Office at Prince George this 21 day of April 1994

w G G
REGISTRAR



REFERENCE PLAN OF CONSOLIDATION OF AMENDED LOT 1 (035007), LOTS 2 AND 3 AND PARCEL X(H28420) EXCEPT PLAN 19797, ALL IN BLOCK 236, PLAN 1268, D. L. 343, CARIBOO DISTRICT. B.C.G.S. 93G.097

Scale: 1 : 750 (Distances are in metres)

Grid bearings are derived from observations between control monuments 85H1289 and 85H1088, integrated survey area number 39, City of Prince George, B.C.

Note: This plan shows ground level measured distances. Prior to computation of U.T.M. co-ordinates multiply by the combined factor 0.99951357.

- LEGEND
- Lead Plug Placed
 - Standard Iron Post Found
 - Standard Iron Post Placed
 - ⊙ Control Monument
 - △ Traverse Hub Placed

I, Dale L. Keown, a British Columbia Land Surveyor of Prince George in British Columbia, certify that I was present at and personally supervised the survey represented by this plan and that the survey and plan are correct. The survey was completed on the 13th day of April, 1994.

Dale Keown
Dale L. Keown, B.C.L.S.

This plan lies within the Fraser-Fort George Regional District.

KILBRIDE LAND SURVEYING LTD. British Columbia Land Surveyors Prince George, B.C. Ph: (604) 562-1196 Fax: 562-3656		
F.B.- RA	D.L.- 343 Block 236	REF. NO.- 940190