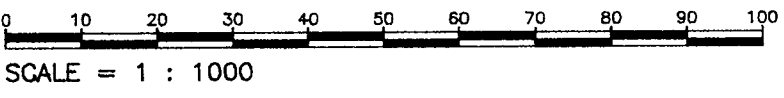


PLAN OF SUBDIVISION OF PART OF
REMAINDER OF BLOCK C,
DISTRICT LOT 1432 AND PART OF
REMAINDER OF THAT PART OF
DISTRICT LOT 8180 AS SHOWN ON
PLAN B3608, CARIBOO DISTRICT.

B.C.G.S. 93G.087



THIS PLAN SHOWS GROUND-LEVEL MEASURED DISTANCES.
PRIOR TO COMPUTATION OF U.T.M. COORDINATES, MULTIPLY
BY COMBINED FACTOR 0.9995105393.

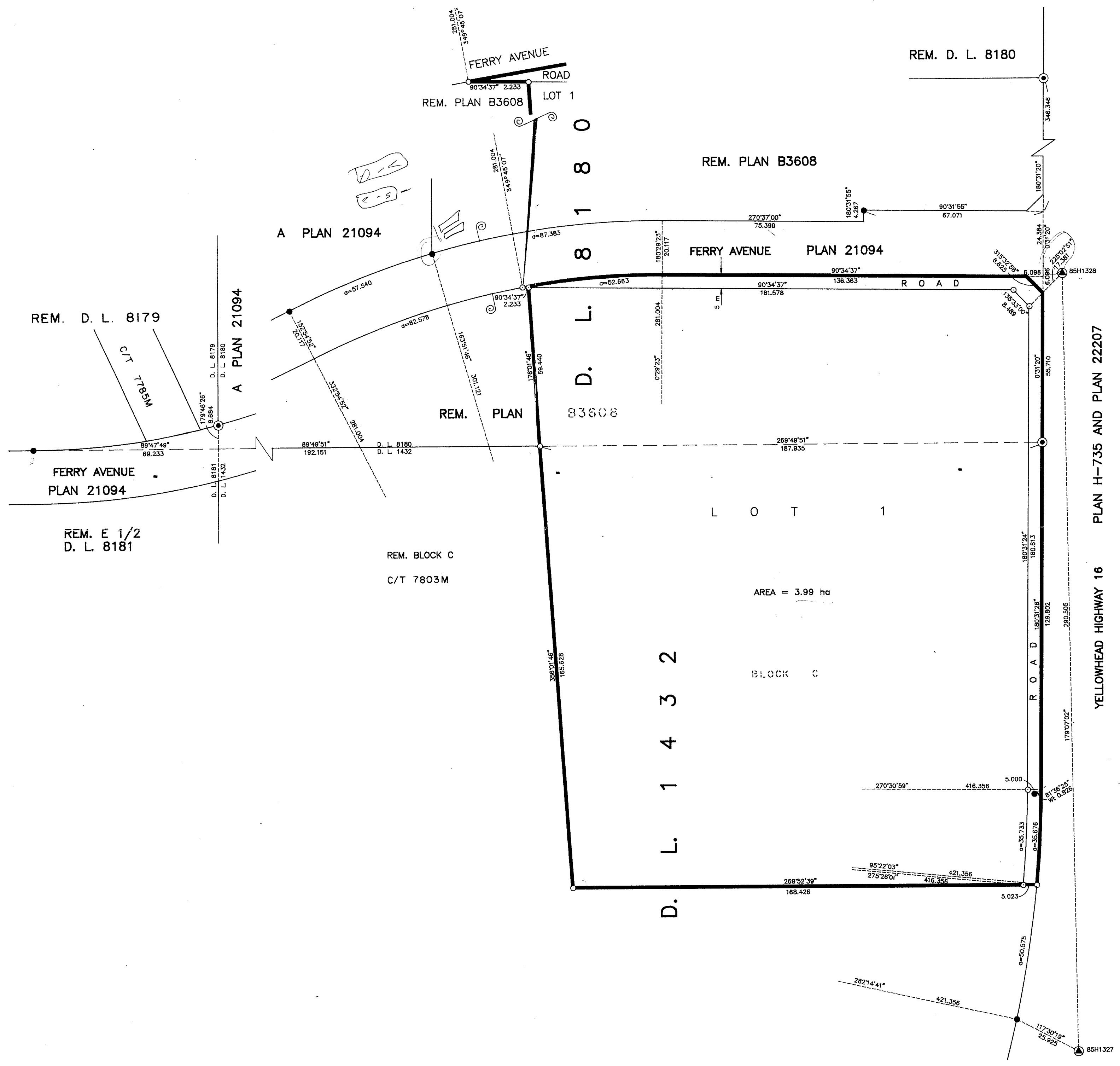
GRID BEARINGS ARE DERIVED FROM OBSERVATIONS
BETWEEN CONTROL MONUMENTS 85H1327, AND 85H1328,
INTEGRATED SURVEY AREA NUMBER 39.

- LEGEND
- STANDARD IRON POST FOUND
 - STANDARD IRON POST PLACED
 - ⊙ STANDARD CONCRETE POST FOUND
 - ▲ CONTROL MONUMENT

PLAN No. PGP 37876

DEPOSITED IN THE LAND TITLE OFFICE
AT PRINCE GEORGE, B.C., THIS 11
DAY OF April 1994

REGISTRAR W69



APPROVED UNDER THE LAND TITLE ACT
THIS ___ DAY OF _____ 19__

APPROVING OFFICER, MINISTRY OF TRANSPORTATION
AND HIGHWAYS.

APPROVED UNDER THE LAND TITLE ACT
THIS 21 DAY OF March 1994

APPROVING OFFICER, CITY OF PRINCE GEORGE.

THIS PLAN LIES WITHIN THE FRASER-
FORT GEORGE REGIONAL DISTRICT.

I, RONALD L. JOHNS, A BRITISH COLUMBIA LAND
SURVEYOR, OF PRINCE GEORGE, IN BRITISH COLUMBIA,
CERTIFY THAT I WAS PRESENT AT AND PERSONALLY
SUPERINTENDED THE SURVEY REPRESENTED BY THIS
PLAN AND THAT THE SURVEY AND PLAN ARE CORRECT.
THE SURVEY WAS COMPLETED ON THE 13th DAY OF
JANUARY, 1994.

R.L. Johns
R.L. JOHNS, B.C.L.S.

OWNER: CITY OF PRINCE GEORGE

MAYOR: *[Signature]*

Deputy CLERK: *[Signature]*

WITNESS (AS TO BOTH SIGNATURES): *[Signature]*

PRINT NAME: JUDY DW

ADDRESS: 132 Mclean Drive
Prince George B.C.

OCCUPATION: Secretary

R. L. JOHNS LAND SURVEYING LTD.
LEGAL AND ENGINEERING SURVEYS
240 VICTORIA STREET
PRINCE GEORGE, B. C. V2L 2J4
PHONE: (604)562-5759
FAX: (604)562-5703