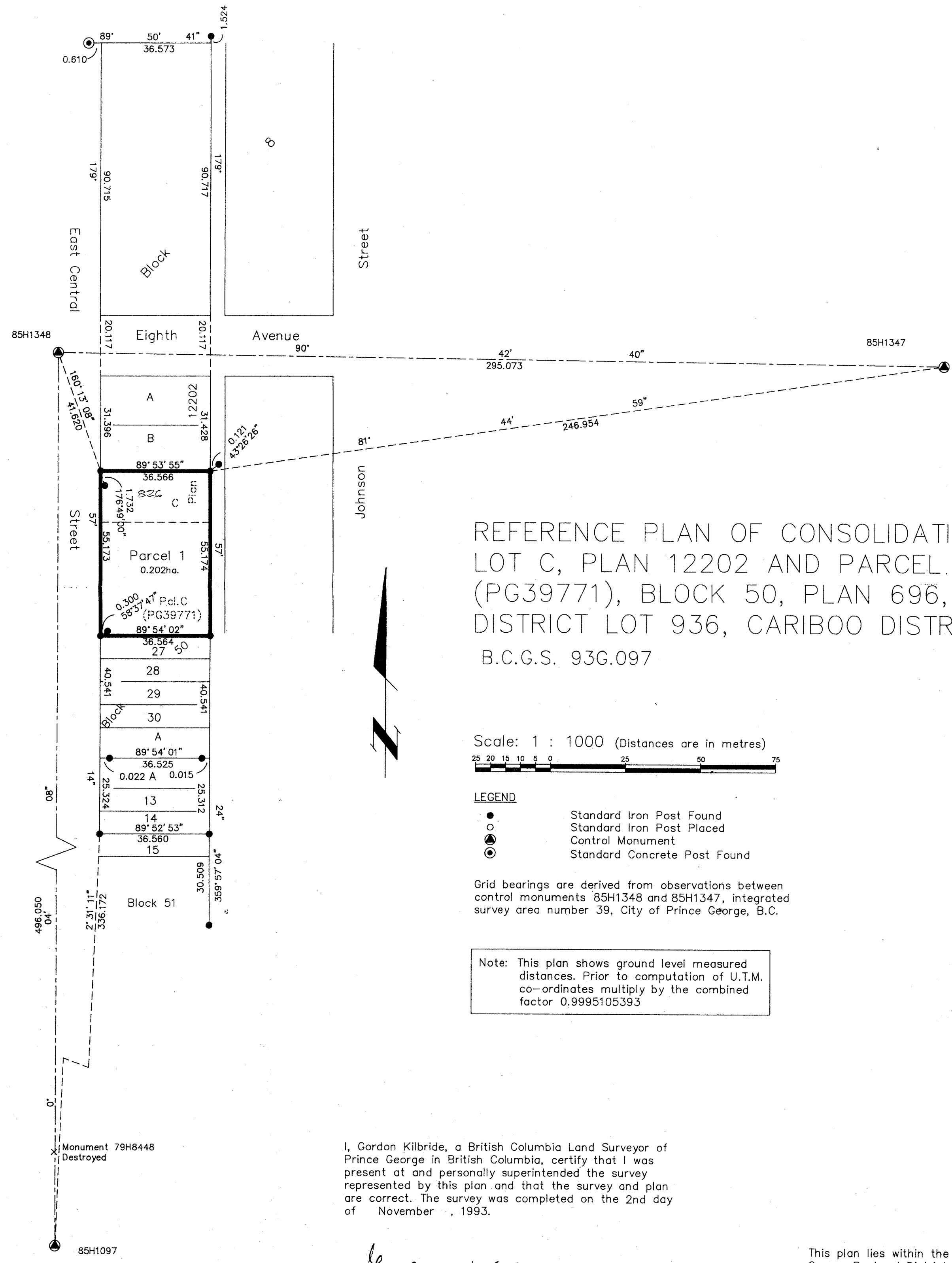


HM

PLAN NO. PGP 37800

Deposited in the Land Title Office at Prince George this 11 day of March 1994

W.G.G.
REGISTRAR



REFERENCE PLAN OF CONSOLIDATION OF
 LOT C, PLAN 12202 AND PARCEL C
 (PG39771), BLOCK 50, PLAN 696,
 DISTRICT LOT 936, CARIBOO DISTRICT.
 B.C.G.S. 93G.097

Scale: 1 : 1000 (Distances are in metres)

LEGEND

- Standard Iron Post Found
- Standard Iron Post Placed
- ▲ Control Monument
- ⊙ Standard Concrete Post Found

Grid bearings are derived from observations between control monuments 85H1348 and 85H1347, integrated survey area number 39, City of Prince George, B.C.

Note: This plan shows ground level measured distances. Prior to computation of U.T.M. co-ordinates multiply by the combined factor 0.9995105393

I, Gordon Kilbride, a British Columbia Land Surveyor of Prince George in British Columbia, certify that I was present at and personally superintended the survey represented by this plan and that the survey and plan are correct. The survey was completed on the 2nd day of November, 1993.

Gordon Kilbride
 Gordon Kilbride, B.C.L.S.

This plan lies within the Fraser-Fort George Regional District.

KILBRIDE LAND SURVEYING LTD.
 British Columbia Land Surveyors
 Prince George, B.C.
 Ph: (604) 562-1196 Fax: 562-3656

F.B.- RA	D.L.-936	REF. NO.- 931027A
----------	----------	-------------------