

PLAN OF SUBDIVISION OF PARTS OF  
 LOTS 38 AND 39, PLAN 10486  
 DISTRICT LOT 754  
 CARIBOO DISTRICT

HE  
 PLAN No. PGP 37695

DEPOSITED IN THE LAND TITLE OFFICE  
 AT PRINCE GEORGE, B.C., THIS 24  
 DAY OF DECEMBER, 1993.

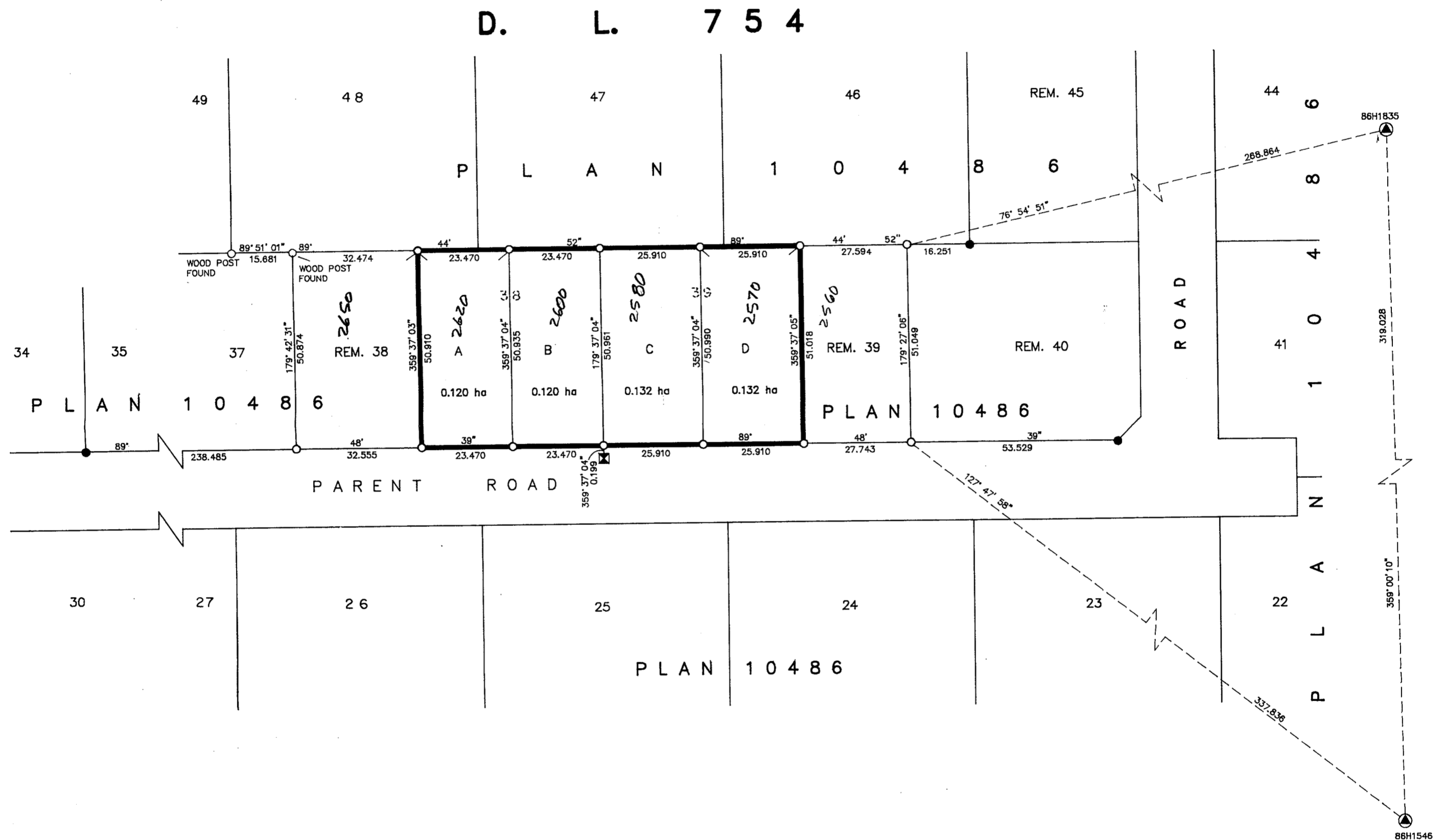
*W. Bandy*  
 REGISTRAR

0 10 20 30 40 50 60 70 80 90 100  
 SCALE = 1 : 1000 B.C.G.S. 93G.087  
 DISTANCES ARE SHOWN IN METRES.

THIS PLAN SHOWS GROUND-LEVEL MEASURED DISTANCES.  
 PRIOR TO COMPUTATION OF U.T.M. COORDINATES, MULTIPLY  
 BY COMBINED FACTOR 0.9995105393.

GRID BEARINGS ARE DERIVED FROM OBSERVATIONS  
 BETWEEN CONTROL MONUMENTS 86H1546, AND 86H1835,  
 INTEGRATED SURVEY AREA NUMBER 39.

- LEGEND
- STANDARD IRON POST FOUND.
  - STANDARD IRON POST PLACED.
  - ▲ CONTROL MONUMENT.
  - ⊠ STANDARD WOODEN POST FOUND.



I, RONALD L. JOHNS, A BRITISH COLUMBIA LAND SURVEYOR, OF PRINCE GEORGE, IN BRITISH COLUMBIA, CERTIFY THAT I WAS PRESENT AT AND PERSONALLY SUPERINTENDED THE SURVEY REPRESENTED BY THIS PLAN AND THAT THE SURVEY AND PLAN ARE CORRECT. THE SURVEY WAS COMPLETED ON THE 10th DAY OF DECEMBER, 1993.

*R.L. Johns*  
 R.L. JOHNS, B.C.L.S.

*Stella McCreia*  
 OWNER: STELLA ALEXENA MCCREA  
*G.E. McCreia*  
 OWNER: GILBERT EMILE MCCREA  
*Rehner*  
 WITNESS (AS TO BOTH SIGNATURES)  
 BE. SHIER  
 PRINT NAME  
 240 VICTORIA STREET  
 ADDRESS  
 PRINCE GEORGE, B.C.  
 LAND SURVEY TECHNOLOGIST  
 OCCUPATION

APPROVED UNDER THE LAND TITLE ACT  
 THIS 23<sup>rd</sup> DAY OF December, 1993

*Wayne Halliday*  
 APPROVING OFFICER, CITY OF PRINCE GEORGE.

THIS PLAN LIES WITHIN THE FRASER-FORT GEORGE REGIONAL DISTRICT.

R. L. JOHNS & ASSOCIATES  
 LEGAL AND ENGINEERING SURVEYS  
 240 VICTORIA STREET  
 PRINCE GEORGE, B. C. V2L 2J4  
 PHONE: (604)562-5759  
 FAX: (604)562-5703