

File: Plan 727

POSTING PLAN OF
LOTS 11 and 12, BLOCK 6,
PLAN 727, D.L. 933,
CARIBOO DISTRICT.

PLAN NO. PGP _____

PGP37655

Deposited in the Land Title Office at Prince
George this 10 day of DEC 1993

B.C.G.S. 93G.087

Scale: 1 : 1000 (Distances are in metres)

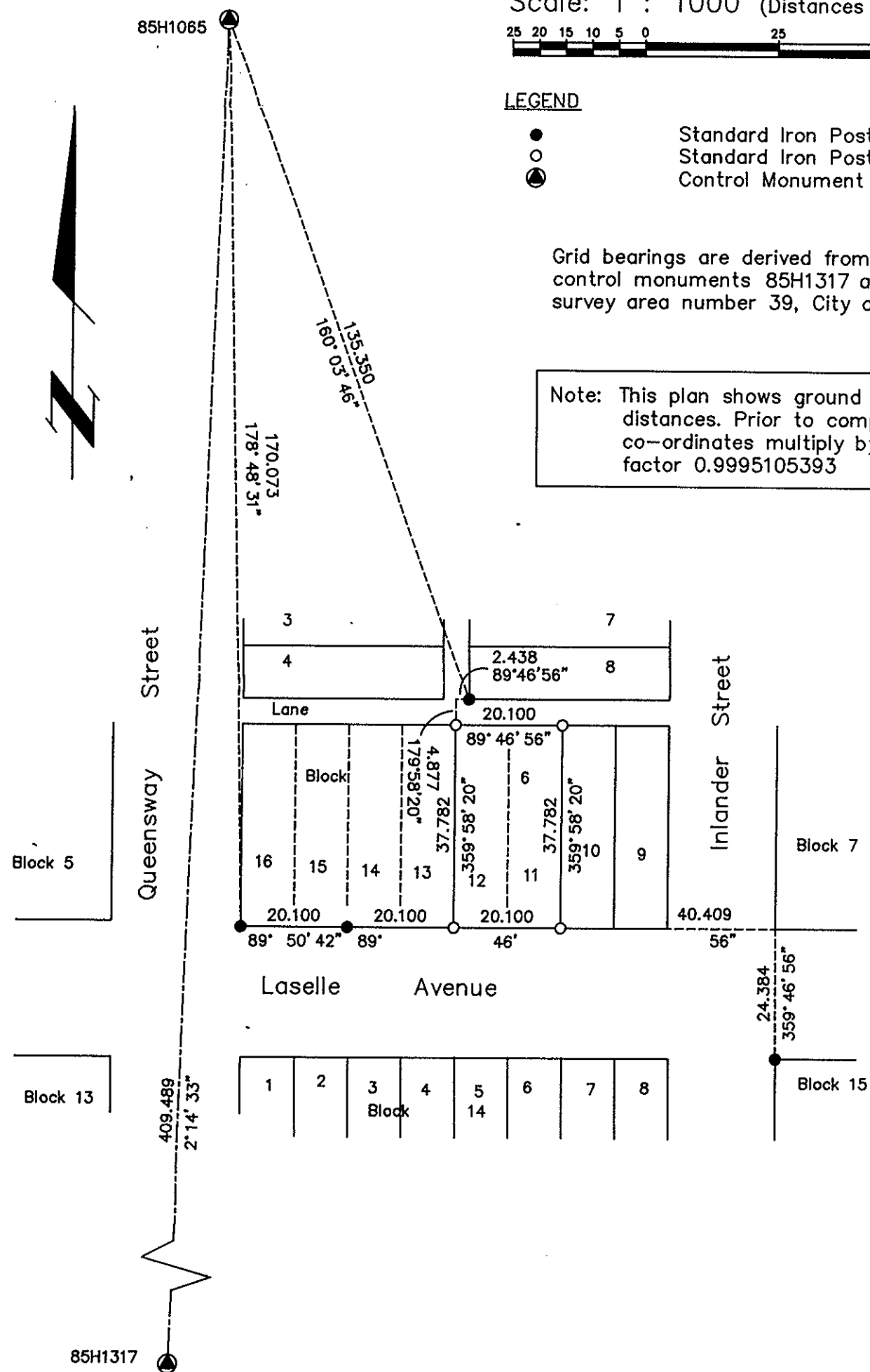


LEGEND

- Standard Iron Post Found
- Standard Iron Post Placed
- ⊙ Control Monument

Grid bearings are derived from observations between control monuments 85H1317 and 85H1065, integrated survey area number 39, City of Prince George, B.C.

Note: This plan shows ground level measured distances. Prior to computation of U.T.M. co-ordinates multiply by the combined factor 0.9995105393



I, Gordon Kilbride, a British Columbia Land Surveyor of Prince George in British Columbia, certify that I was present at and personally superintended the survey represented by this plan and that the survey and plan are correct. The survey was completed on the 15 day of November, 1993.

Gordon Kilbride
Gordon Kilbride, B.C.L.S.

This plan lies within the Fraser-Fort
George Regional District.

KILBRIDE LAND SURVEYING LTD.
British Columbia Land Surveyors
Prince George, B.C.
Ph: (604) 562-1196 Fax: 562-3656

F.B.- UD 33

D.L.- 933

REF. NO.- 931080