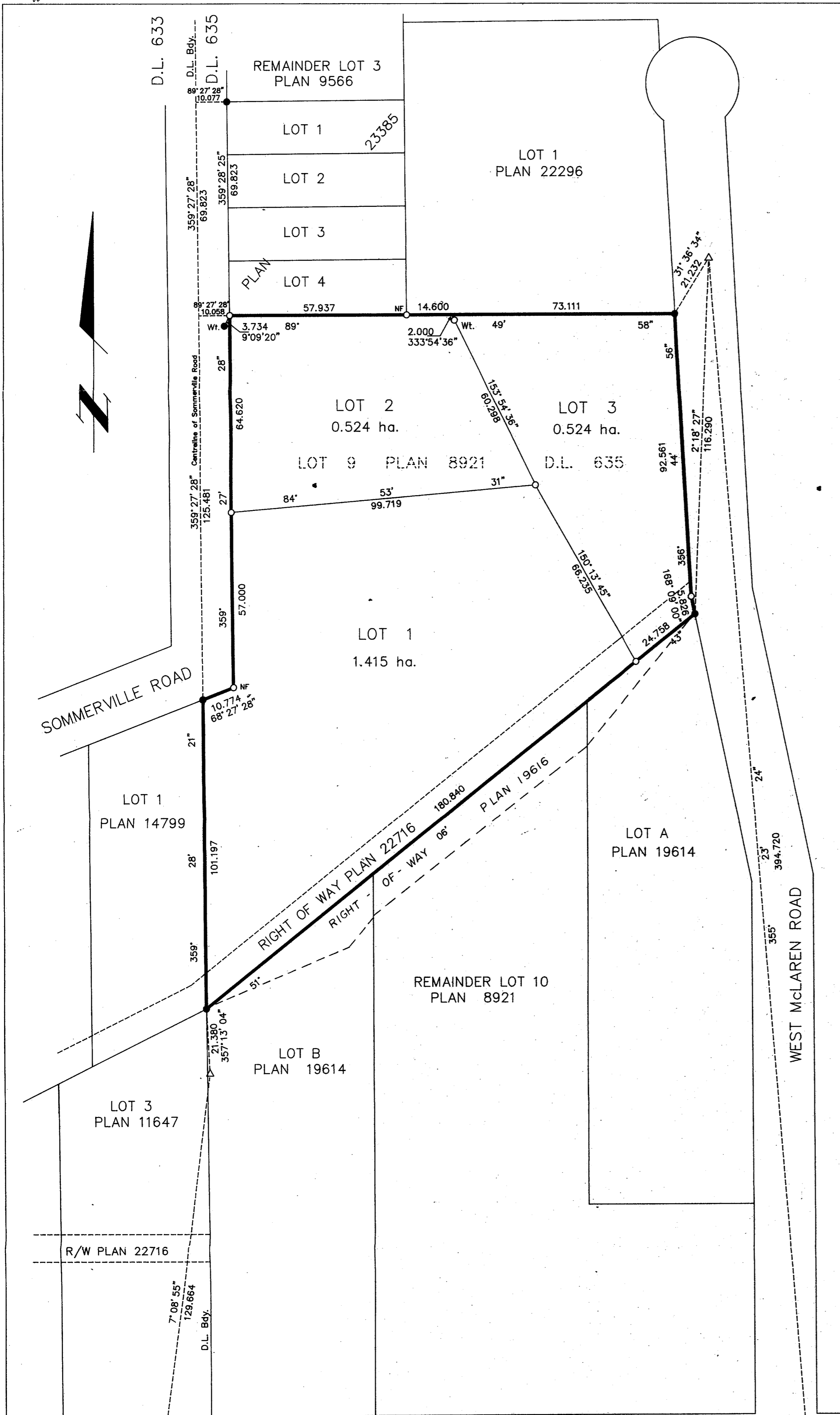


W.O.# 078/079 1993

PLAN NO. PGP 37374

Deposited in the Land Title Office at Prince George this 27 day of AUG. 1993

W.G.G.  
REGISTRAR



PLAN OF SUBDIVISION OF  
 LOT 9, PLAN 8921,  
 DISTRICT LOT 635,  
 CARIBOO DISTRICT.  
 B.C.L.S. 93G.097

Scale: 1 : 1000 (Distances are in metres)

Note: This plan shows ground level measured distances. Prior to computation of U.T.M. co-ordinates multiply by the combined factor 0.9995105393

Grid bearings are derived from observations between control monuments 85H1265 and 85H1283, integrated survey area number 39, City of Prince George, B.C.

**LEGEND**  
 ● Standard Iron Post Found  
 ○ Standard Iron Post Placed  
 ⊙ Control Monument  
 △ Traverse Hub

I, Gordon Kilbride, a British Columbia Land Surveyor of Prince George in British Columbia, certify that I was present at and personally superintended the survey represented by this plan and that the survey and plan are correct. The survey was completed on the 18th day of June, 1993.

*Gordon Kilbride*  
 Gordon Kilbride, B.C.L.S.

Approved under the Land Title Act this 18 day of AUGUST, 1993

*Wayne Halliday*  
 Approving Officer  
 City of Prince George

Owner: Lot 9, Plan 8921, D.L. 635, Cariboo District

*Blodwyn Richelle Bristow*  
 Blodwyn Richelle Bristow  
 Executor of the Will of Ellen Bristow,  
 deceased See PG10979.

Witness  
*Robert Pearson*  
 Robert Pearson  
 Print Name  
 16280 Southaven Place  
 Address  
 Surrey BC V3R 8N4  
 Postal Code  
 562 1/m Clerk CWR  
 Occupation

This plan lies within the Fraser-Fort George Regional District.

**KILBRIDE SURVEYS**  
 British Columbia Land Surveyors  
 Prince George, B.C.  
 Ph: (604) 562-1196 Fax: 562-3656  
 F.B.- RA    D.L.- 635    REF. NO.- 930094

1570