

DEPOSITED IN THE LAND TITLE OFFICE
AT PRINCE GEORGE, B.C., THIS 20th
DAY OF August, 1993.

W. G. Gandy 102
REGISTRAR

*Corrected pursuant to Section 106
Land Title Act see PM 19344.
13 May 1998 L. J. Kelbride/dg*

PLAN OF SUBDIVISION OF PART OF
REMAINDER OF LOT 1, PLAN 30220,
DISTRICT LOT 2433,
CARIBOO DISTRICT

SCALE 1 : 500 B.C.G.S. 93J.007
0 5 10 15 20 25 30 35 40 45 50

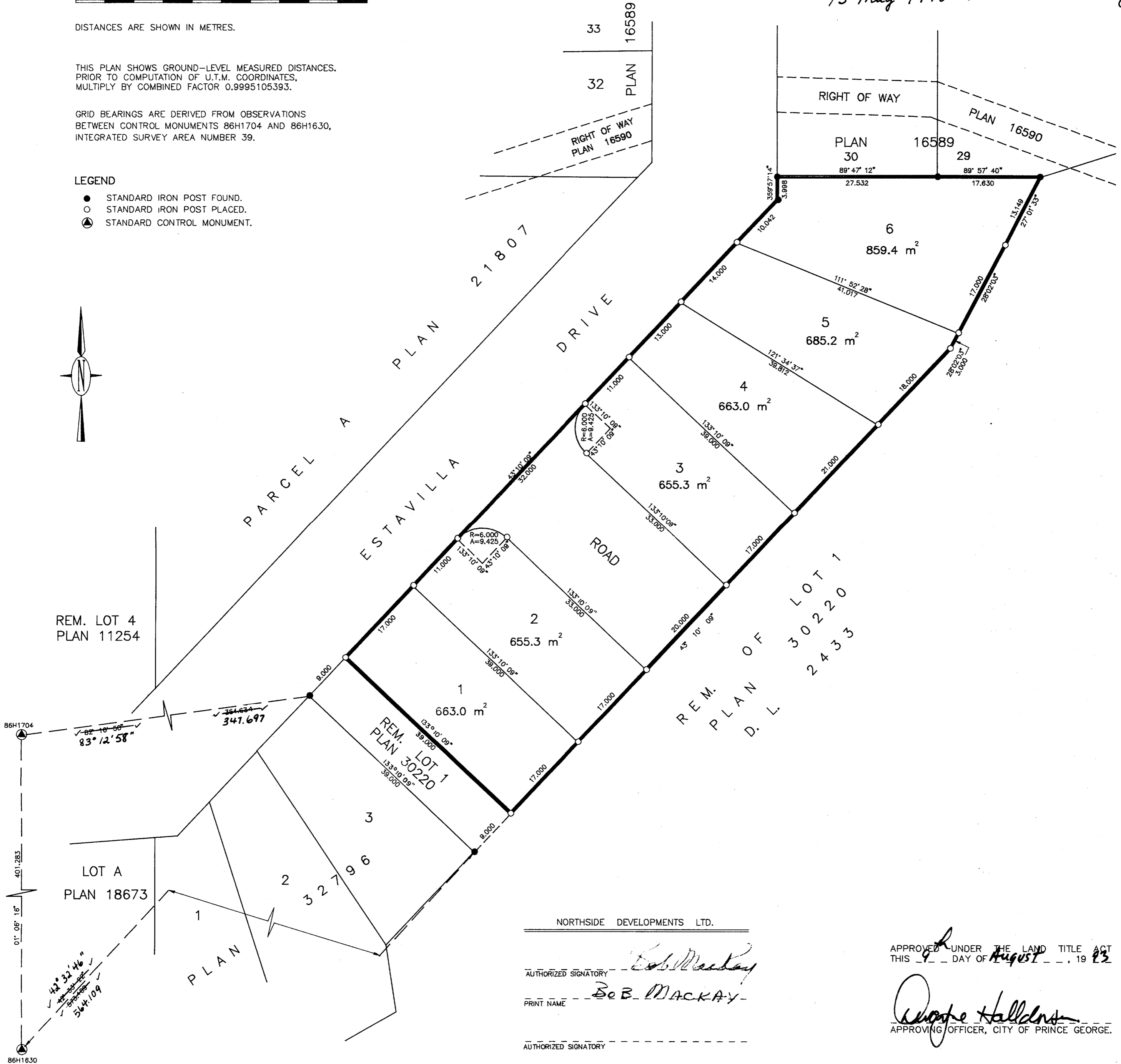
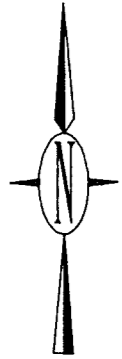
DISTANCES ARE SHOWN IN METRES.

THIS PLAN SHOWS GROUND-LEVEL MEASURED DISTANCES.
PRIOR TO COMPUTATION OF U.T.M. COORDINATES,
MULTIPLY BY COMBINED FACTOR 0.9995105393.

GRID BEARINGS ARE DERIVED FROM OBSERVATIONS
BETWEEN CONTROL MONUMENTS 86H1704 AND 86H1630,
INTEGRATED SURVEY AREA NUMBER 39.

LEGEND

- STANDARD IRON POST FOUND.
- STANDARD IRON POST PLACED.
- ⊙ STANDARD CONTROL MONUMENT.



REM. LOT 4
PLAN 11254

LOT A
PLAN 18673

REM. LOT 1
PLAN 30220

REM. OF
PLAN OF
D. L.
30220
2433

NORTHSIDE DEVELOPMENTS LTD.

AUTHORIZED SIGNATORY Bob Mackay

PRINT NAME BOB MACKAY

AUTHORIZED SIGNATORY _____

PRINT NAME _____

WITNESS (AS TO BOTH SIGNATURES)

GORDON LANGER

PRINT NAME _____

131000 INVERNESS DR.

ADDRESS _____

PRINCE GEORGE, B.C.

REACTOR

OCCUPATION _____

APPROVED UNDER THE LAND TITLE ACT
THIS 20th DAY OF August, 1993

George Halliday
APPROVING OFFICER, CITY OF PRINCE GEORGE.

I, RONALD L. JOHNS, A BRITISH COLUMBIA LAND SURVEYOR, OF PRINCE GEORGE, IN BRITISH COLUMBIA, CERTIFY THAT I WAS PRESENT AT AND PERSONALLY SUPERINTENDED THE SURVEY REPRESENTED BY THIS PLAN AND THAT THE SURVEY AND PLAN ARE CORRECT. THE SURVEY WAS COMPLETED ON THE 24TH DAY OF MARCH, 1993.

R.L. Johns
R.L. JOHNS, B.C.L.S.

THIS PLAN LIES WITHIN THE FRASER-FORT GEORGE REGIONAL DISTRICT.

R.L. JOHNS & ASSOCIATES
LEGAL AND ENGINEERING SURVEYS
240 VICTORIA STREET
PRINCE GEORGE, B.C. V2L 2J4
PHONE: (604) 562-5759
FAX: (604) 562-5703