

PGP37345

PLAN NO. PGP

Deposited in the Land Title Office at Prince George this 18 day of Aug 1993.

Registrar W.B.

REFERENCE PLAN OF CONSOLIDATION OF REMAINDER OF LOT 7, PLAN 16840, AND REMAINDER LOT 8, PLAN 16840, AND CLOSED ROAD PLAN PGP ALL IN D.L.343, CARIBOO DISTRICT. B.C.G.S. 936.097

SCALE 1:500 (All distances are in meters.)

Grid bearings are derived from observations between control monuments 85H1059 and 85H1067. Integrated survey area number 39. City of Prince George.

Note: This plan shows ground level measured distances. Prior to computation of U.T.M. co ordinates multiply by the combined factor 0.9995105393.

- Legend: Standard Iron Post found, Standard Iron Post set, Control Monument.

I, A. Daniluck, a British Columbia Land Surveyor, of Prince George in British Columbia certify that I was present at and personally superintended the survey represented by this plan and that the survey and plan are correct. The survey was completed on the 22nd of April, 1993.

A. Daniluck, B.C.L.S.

This plan lies within the Fraser Fort George Regional District.

A. Daniluck, B.C. Land Surveyor, Prince George - B.C.

REF. NO. 93-004B

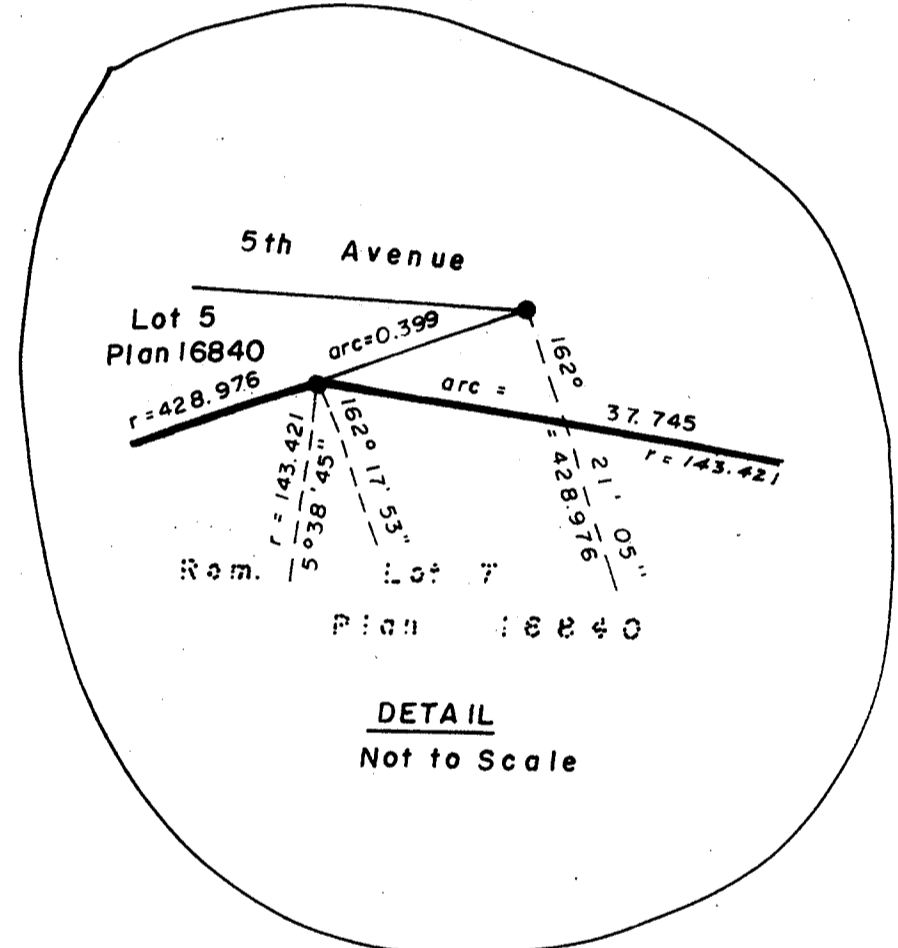
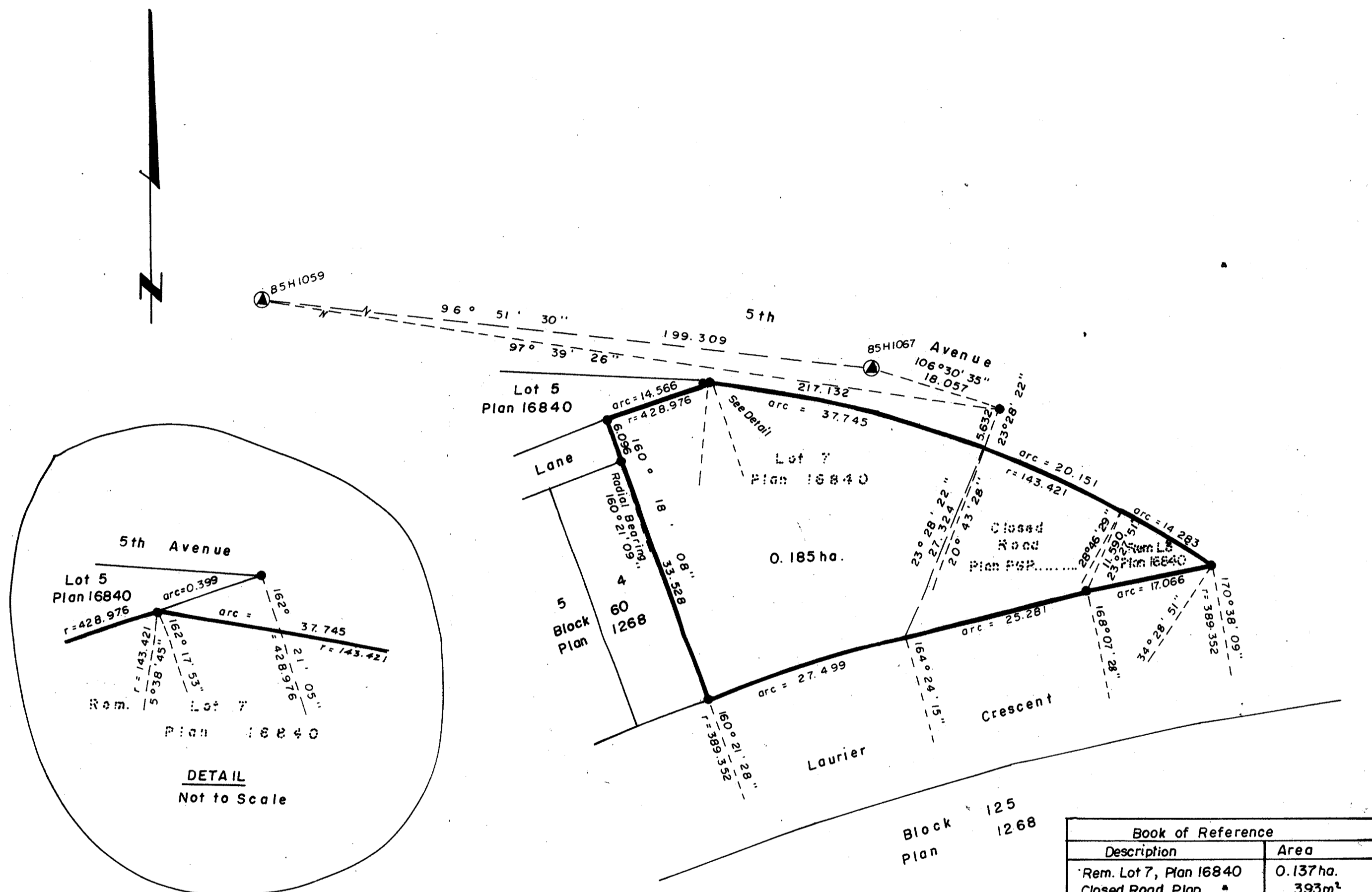


Table with 2 columns: Description, Area. Rows include Rem. Lot 7, Closed Road Plan, Rem. Lot 8, and Total Parcel Area.

Owner: Rem. Lot 7 Plan 16840. Luigi Banducci (signature), Witness (signature), Notary Public JOHN C. STRINGER, 101-1449 ST. PAUL ST., KELOWNA, B.C. V1Y 2E5.

City of Prince George. Authorized Signatory J.E. BACKHOUSE, MAYOR. Authorized Signatory George Paul. Witness Loranne Martin. Address 7885 Rochester Cres. P6R6 VAN3V7.