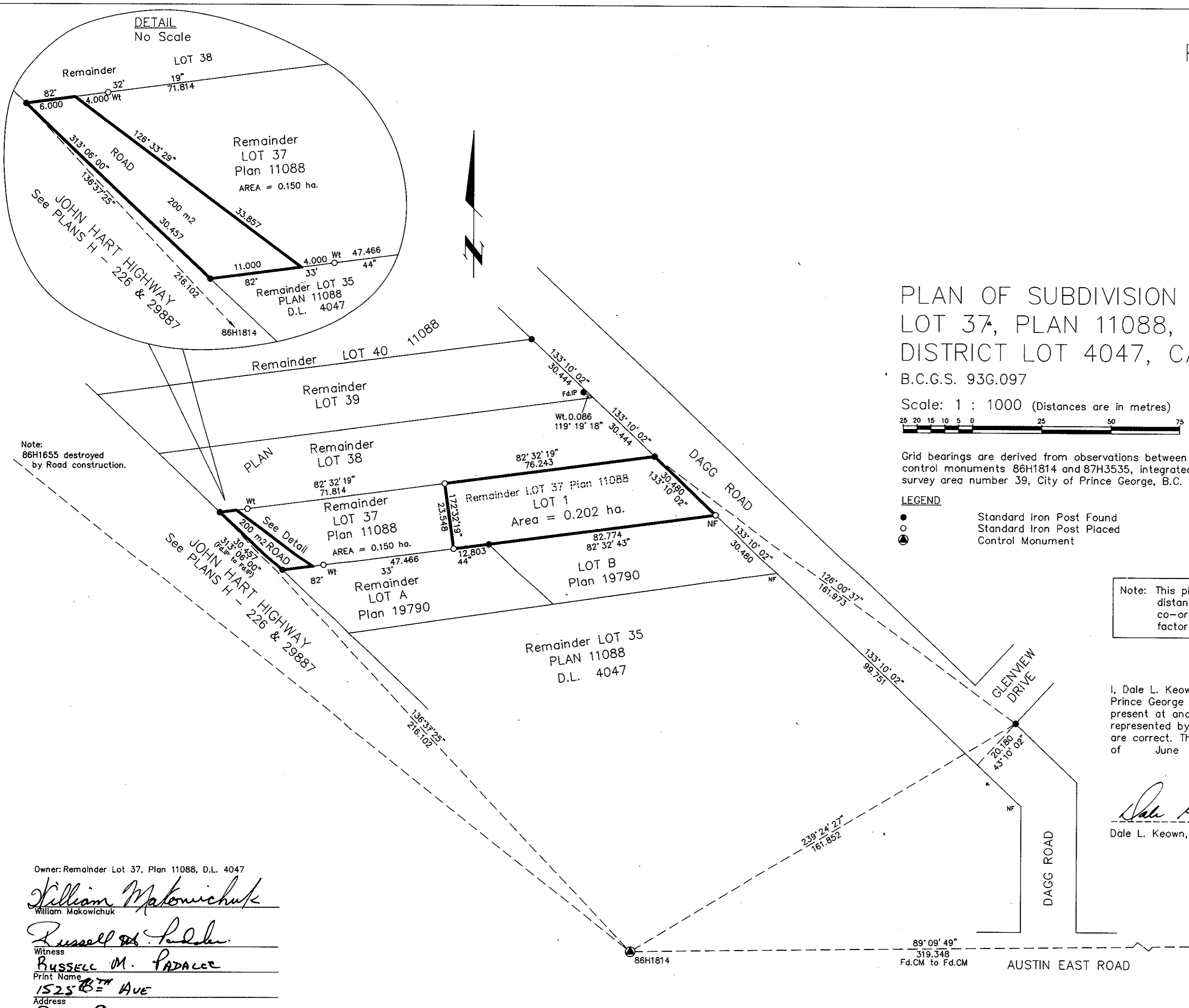


Deposited in the Land Title Office at Prince George this 14 day of July 1993

W. Keown
REGISTRAR



PLAN OF SUBDIVISION OF OF PART OF LOT 37, PLAN 11088, EXCEPT PLAN 29887, DISTRICT LOT 4047, CARIBOO DISTRICT. B.C.G.S. 93G.097

Scale: 1 : 1000 (Distances are in metres)

Grid bearings are derived from observations between control monuments 86H1814 and 87H3535, integrated survey area number 39, City of Prince George, B.C.

- LEGEND**
- Standard Iron Post Found
 - Standard Iron Post Placed
 - ⊙ Control Monument

Note: This plan shows ground level measured distances. Prior to computation of U.T.M. co-ordinates multiply by the combined factor 0.9995105393

I, Dale L. Keown, a British Columbia Land Surveyor of Prince George in British Columbia, certify that I was present at and personally supervised the survey represented by this plan and that the survey and plan are correct. The survey was completed on the 21st day of June, 1993.

Dale Keown
Dale L. Keown, B.C.L.S.

Note: 86H1655 destroyed by Road construction.

Owner: Remainder Lot 37, Plan 11088, D.L. 4047

William Makowichuk
William Makowichuk

Witness
Russell M. Padalce
RUSSELL M. PADALCE
1525 BTH AVE
PRINCE GEORGE B.C. V2L 3N4
REACTOR.
Occupation

Approved under the Land Title Act this 6 day of July 1993

[Signature]
Approving Officer
Ministry of Transportation and Highways

Approved under the Land Title Act this 12 day of July 1993

[Signature]
Approving Officer
City of Prince George.

This plan lies within the Fraser-Fort George Regional District.

KILBRIDE LAND SURVEYING LTD.
British Columbia Land Surveyors
Prince George, B.C.
Ph: (604) 562-1196 Fax: 562-3656

F.B.- RA	D.L.- 4047	REF. NO.- 930013
----------	------------	------------------