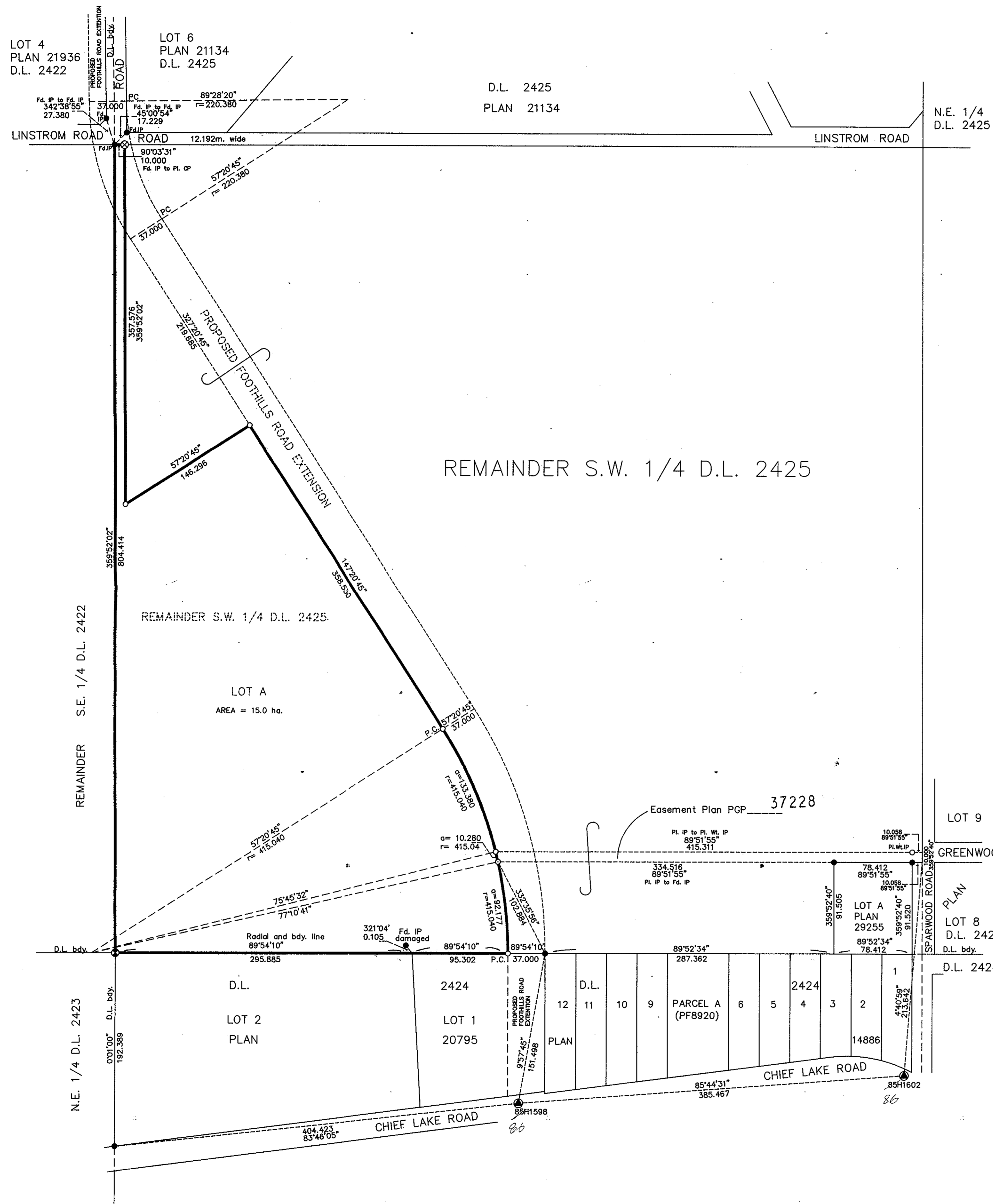


Deposited in the Land Title Office at Prince George this 25 day of June 1993

W.G.
REGISTRAR



REMAINDER S.W. 1/4 D.L. 2425

REMAINDER S.W. 1/4 D.L. 2425

LOT A
AREA = 15.0 ha.

Easement Plan PGP 37228

LOT 9

GREENWOOD ROAD

PLAN

LOT 8

D.L. 2425

D.L. 2424

N.E. 1/4 D.L. 2423

D.L.
LOT 2
PLAN

D.L.
LOT 1
PLAN

D.L.
LOT 12
PLAN

D.L.
LOT 11
PLAN

D.L.
LOT 10
PLAN

D.L.
LOT 9
PLAN

D.L.
LOT 8
PLAN

PARCEL A
(PF8920)

LOT A
PLAN
29255

LOT 1
PLAN
20795

LOT 2
PLAN
29255

CHIEF LAKE ROAD

CHIEF LAKE ROAD

Owner: S.W. 1/4 OF D.L. 2425 EXCEPT PLAN 29255
ANIK DEVELOPMENTS LTD (INC. #257605)

Authorized Signatory
Print Name
Authorized Signatory
Print Name

Witness
Dale Keown
Print Name
324 Vancouver Street
Address
Prince George, B.C. V2L 2N9
Postal Code
B.C. Land Surveyor.
Occupation

I, Dale L. Keown, a British Columbia Land Surveyor of Prince George in British Columbia, certify that I was present at and personally superintended the survey represented by this plan and that the survey and plan are correct. The survey was completed on the 20 day of May, 1993.

Dale Keown
Dale L. Keown, B.C.L.S.

Approved under the Land Title Act this 26 day of May 1993

Approving Officer
City of Prince George

PLAN of SUBDIVISION of
PART of the REMAINDER of
S.W. 1/4 DISTRICT LOT 2425
CARIBOO DISTRICT
B.C.G.S. 93J.006

Scale: 1 : 2500 (Distances are in metres)

Grid bearings are derived from observations between control monuments 86H1598 and 86H1602, integrated survey area number 39, City of Prince George, B.C.

- LEGEND
- ⊙ Standard Capped Post Found
 - ⊗ Standard Capped Post Placed
 - Standard Iron Post Found
 - Standard Iron Post Placed
 - ⊙ Control Monument

Note: This plan shows ground level measured distances. Prior to computation of U.T.M. co-ordinates multiply by the combined factor, 0.9995105393

This plan lies within the Fraser-Fort George Regional District.

KILBRIDE SURVEYS
British Columbia Land Surveyors
Prince George, B.C.
Ph: (604) 562-1196 Fax: 562-3656
F.B.- RA D.L.- 2425 REF. NO.- 930127