

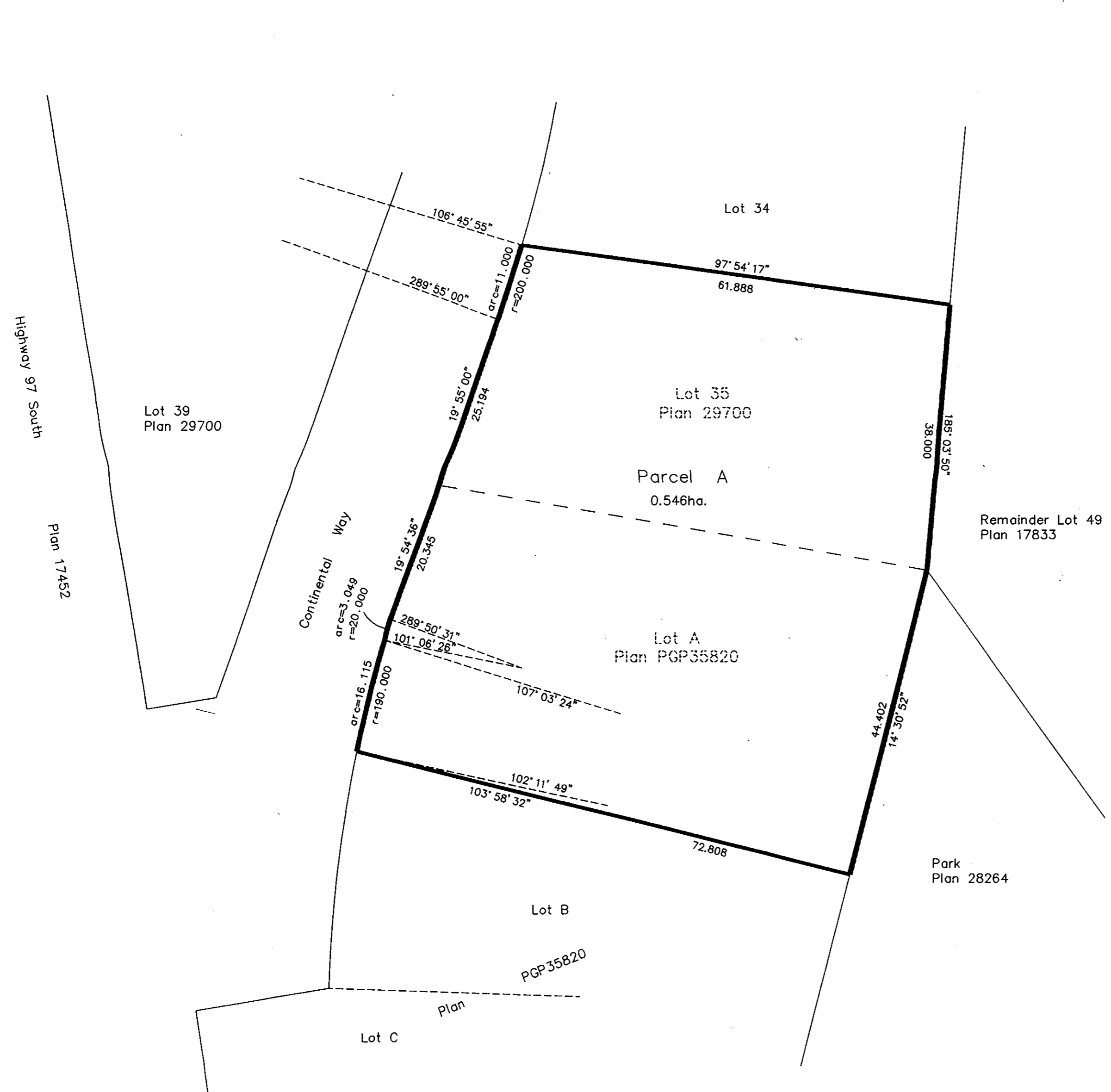
Deposited in the Land Title Office at Prince George this 24 day of June 1993

REGISTRAR *[Signature]*

### EXPLANATORY PLAN OF CONSOLIDATION OF LOT 35, PLAN 29700 AND LOT A, PLAN PGP35820, D.L. 745, CARIBOO DISTRICT.

B.C.G.S. 93G.087

Scale: 1 : 500 (Distances are in metres)



Certified Correct according to Land Title Office Records this 1st day of June, 1993.

*[Signature]*

Dale L. Keown, B.C.L.S.

This plan lies within the Fraser-Fort George Regional District.

<b>KILBRIDE LAND SURVEYING LTD.</b> British Columbia Land Surveyors Prince George, B.C. Ph: (604) 562-1196 Fax: 562-3656		
F.B.-	D.L.- 745	REF. NO.- 930429