

63, 11

PGP37167

PLAN NO. PGP _____

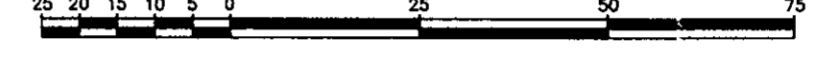
Deposited in the Land Title Office at Prince George this 20 day of June 1993

REGISTRAR *Wesley*

PLAN OF SUBDIVISION OF PART OF REMAINDER OF LOT 4, PLAN 30863, DISTRICT LOT 1605, CARIBOO DISTRICT.

B.C.G.S. 93G.087

Scale: 1 : 1000 (Distances are in metres)

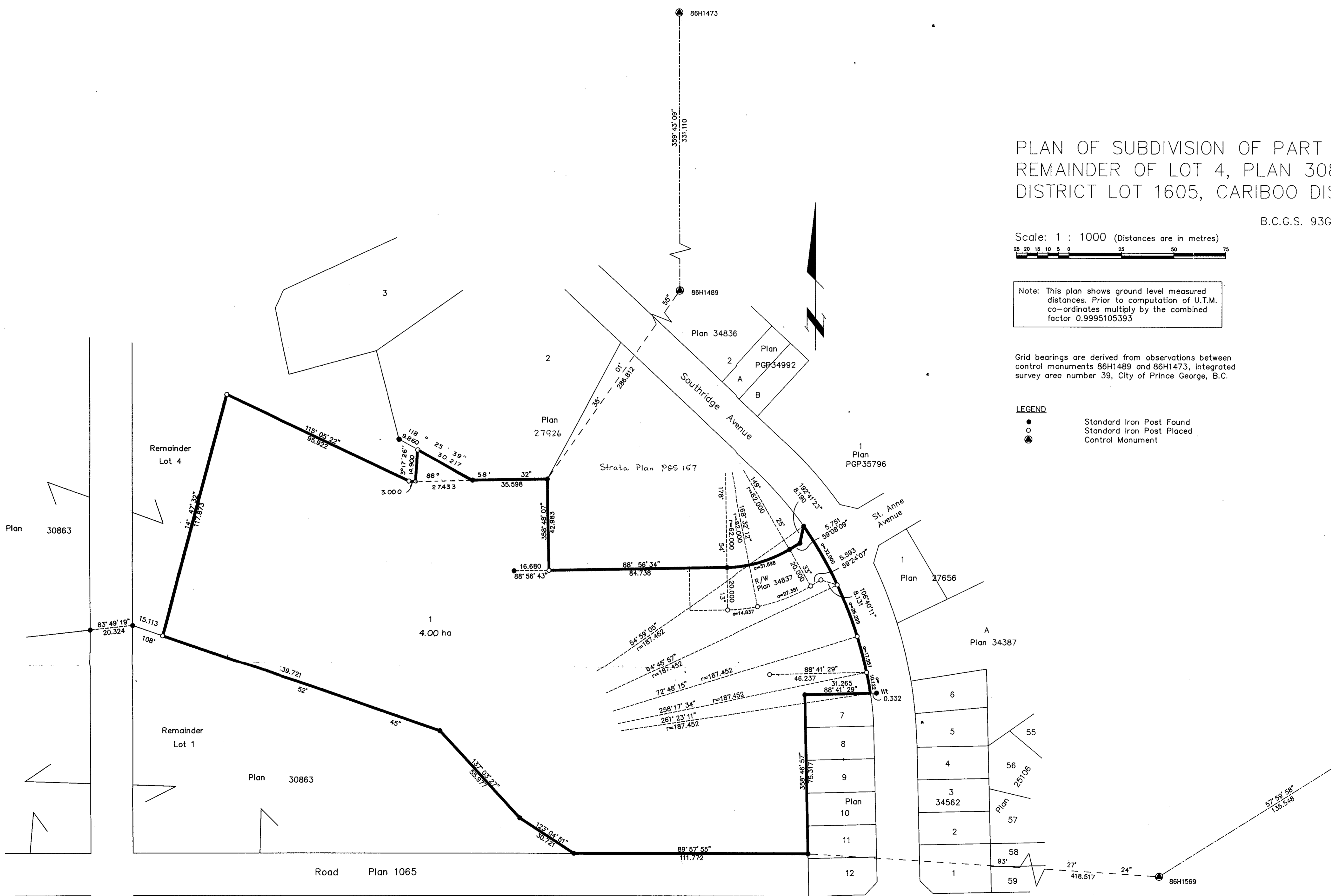


Note: This plan shows ground level measured distances. Prior to computation of U.T.M. co-ordinates multiply by the combined factor 0.9995105393

Grid bearings are derived from observations between control monuments 86H1489 and 86H1473, integrated survey area number 39, City of Prince George, B.C.

LEGEND

- Standard Iron Post Found
- Standard Iron Post Placed
- ⊙ Control Monument



I, Gordon Kilbride, a British Columbia Land Surveyor of Prince George in British Columbia, certify that I was present at and personally superintended the survey represented by this plan and that the survey and plan are correct. The survey was completed on the 30 day of April, 1993.

Gordon Kilbride
Gordon Kilbride, B.C.L.S.

Approved under the Land Title Act this 21st day of May 1993

James Halliday
Approving Officer
City of Prince George.

This plan lies within the Fraser Fort George Regional District.

The Roman Catholic Episcopal Corporation of Prince Rupert.

Witness *A. Stringer*
Print Name *A. Stringer*
Address *8252 St. John Cres. Prince George BC V2N 1H8.*
Occupation *Bus. Mgr.*

Authorized Signatory *J.E. Larkin*
Print Name *J.E. LARKIN*
Occupation _____

Remainder S.W. 1/4 D.L. 754
Plan 24920

KILBRIDE SURVEYS
British Columbia Land Surveyors
Prince George, B.C.
Ph: (604) 562-1196 Fax: 562-3656

F.B.- TS 44 D.L.- 1605 REF. NO.-930280