

OK

PLAN NO. PGP 37108

Deposited in the Land Title Office at Prince George this 11 day of May 1993.

W. G. Mandy  
REGISTRAR

# PLAN OF SUBDIVISION OF PART OF THE REMAINDER OF LOT A, PLAN 11134, DISTRICT LOT 635, CARIBOO DISTRICT.

B.C.G.S. 93G.097

Scale: 1 : 1250 (Distances are in metres)



Note: This plan shows ground level measured distances. Prior to computation of U.T.M. co-ordinates multiply by the combined factor 0.9995105393

Grid bearings are derived from observations between control monuments 85H1283 and 85H1265, integrated survey area number 39, City of Prince George, B.C.

### LEGEND

- ⊙ Standard Capped Post Found
- Standard Iron Post Found
- Standard Iron Post Placed
- ⊕ Control Monument
- △ Traverse Hub

I, Gordon Kilbride, a British Columbia Land Surveyor of Prince George in British Columbia, certify that I was present at and personally superintended the survey represented by this plan and that the survey and plan are correct. The survey was completed on the 22nd day of January, 1992.

*Gordon Kilbride*  
Gordon Kilbride, B.C.L.S.

Owner:

*Dalton Edward Christofferson*  
Dalton Edward Christofferson

*Edith Louise Christofferson*  
Edith Louise Christofferson

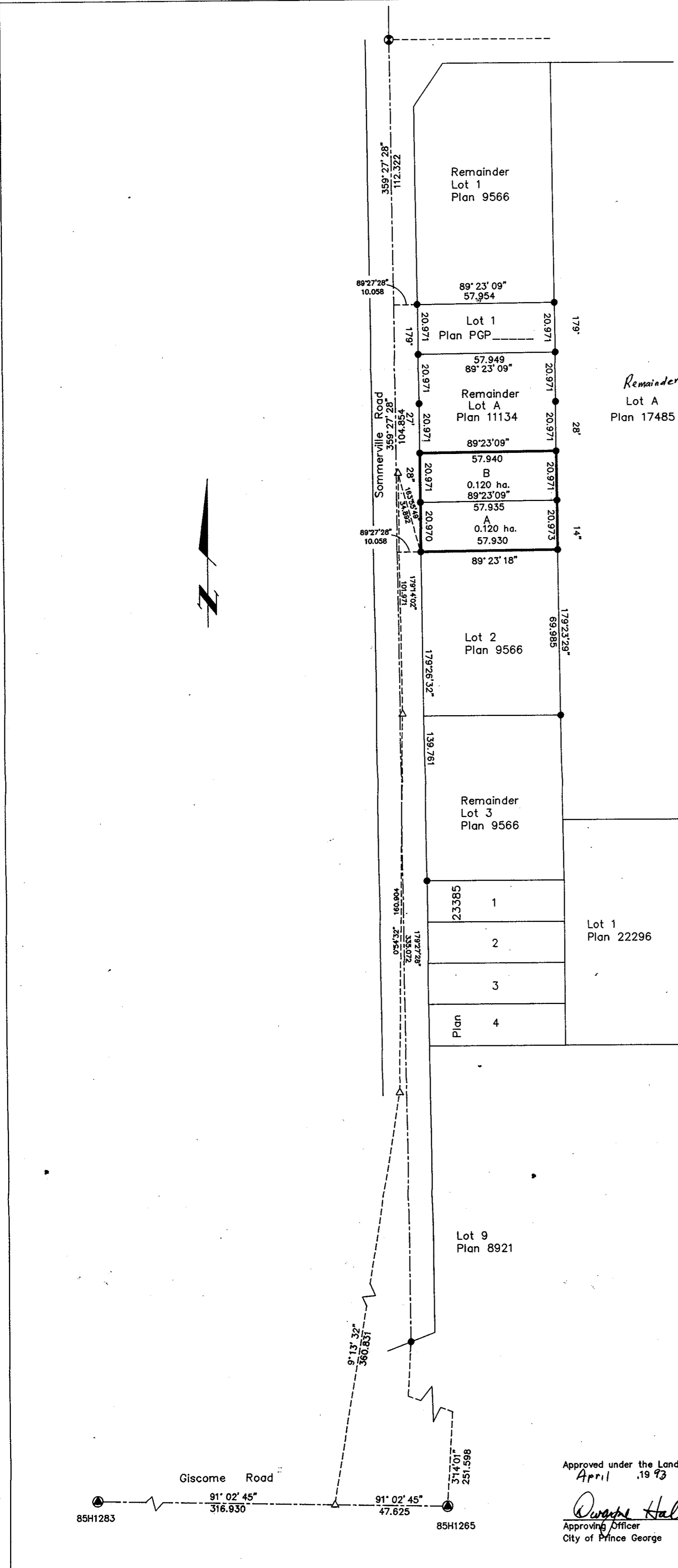
*L. Moshenko*  
Witness to both signatures

L. MOSHENKO  
Print Name

324 - VANCOUVER ST.  
Address

PRINCE GEORGE BC V2L2N9  
Postal Code

DRAFTER PERSON.  
Occupation



Approved under the Land Title Act this 23rd day of April, 1993.  
*Quayle Halliday*  
Approving Officer  
City of Prince George

This plan lies within the Fraser-Fort George Regional District.

<b>KILBRIDE SURVEYS</b> British Columbia Land Surveyors Prince George, B.C. Ph: (604) 562-1196 Fax: 562-3656		
F.B.- TX 18	D.L.- 635	REF. NO.- 930258