

Deposited in the Land Title Office at Prince George this 11 day of May 1993

W. G. Handy
REGISTRAR per LH

PLAN OF SUBDIVISION OF PART OF LOT A, PLAN 11134, DISTRICT LOT 635, CARIBOO DISTRICT.

B.C.G.S. 93G.097

Scale: 1 : 1250 (Distances are in metres)



Note: This plan shows ground level measured distances. Prior to computation of U.T.M. co-ordinates multiply by the combined factor 0.9995105393

Grid bearings are derived from observations between control monuments 85H1283 and 85H1265, integrated survey area number 39, City of Prince George, B.C.

LEGEND

- ⊙ Standard Capped Post Found
- Standard Iron Post Found
- Standard Iron Post Placed
- ⊠ Control Monument
- △ Traverse Hub

I, Gordon Kilbride, a British Columbia Land Surveyor of Prince George in British Columbia, certify that I was present at and personally superintended the survey represented by this plan and that the survey and plan are correct. The survey was completed on the 22nd day of January, 1993.

Gordon Kilbride
Gordon Kilbride, B.C.L.S.

Owner:

Edwin Christofferson
Edwin Christofferson

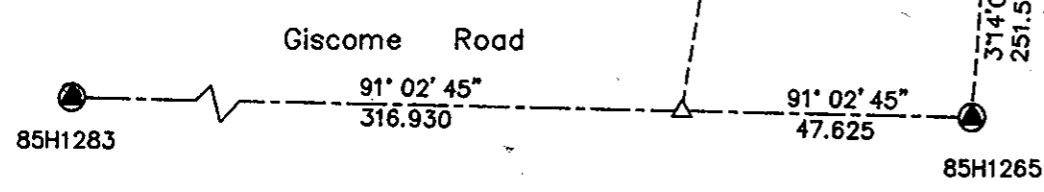
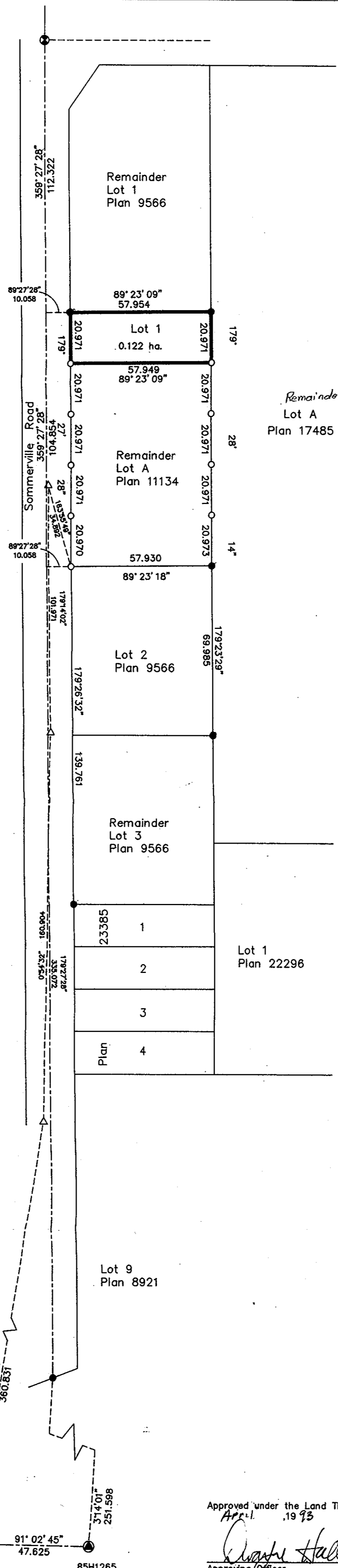
Edith Louise Christofferson
Edith Louise Christofferson

Gordon Kilbride
Witness to both signatures

Gordon Kilbride
Print Name

324 Vancouver Street
Address
Prince George, BC V2L 2N9
Postal Code

B.C. Land Surveyor
Occupation



Approved under the Land Title Act this 23rd day of April, 1993
Quatre Halderon
Approving Officer
City of Prince George

This plan lies within the Fraser-Fort George Regional District.

KILBRIDE SURVEYS British Columbia Land Surveyors Prince George, B.C. Ph: (604) 562-1196 Fax: 562-3656		
F.B.- TX 18	D.L.- 635	REF. NO.-921076