

Deposited in the Land Title Office at Prince George this 29 day of APRIL 1993.

WGG
REGISTRAR

PLAN OF STATUTORY RIGHT-OF-WAY THROUGH REMAINDER LOT 21, LOT 27 AND LOT 28, PLAN 28774, DISTRICT LOT 2003, CARIBOO DISTRICT.
B.C.G.S. 93G.087

Scale: 1 : 1000 (Distances are in metres)

- LEGEND**
- ⊙ Standard Concrete Post Found
 - Standard Iron Post Found
 - Standard Iron Post Placed
 - ⊕ Control Monument

Grid bearings are derived from observations between control monuments 86H1817 and 86H1832, integrated survey area number 39, City of Prince George, B.C.

Note: This plan shows ground level measured distances. Prior to computation of U.T.M. co-ordinates multiply by the combined factor 0.9995105393

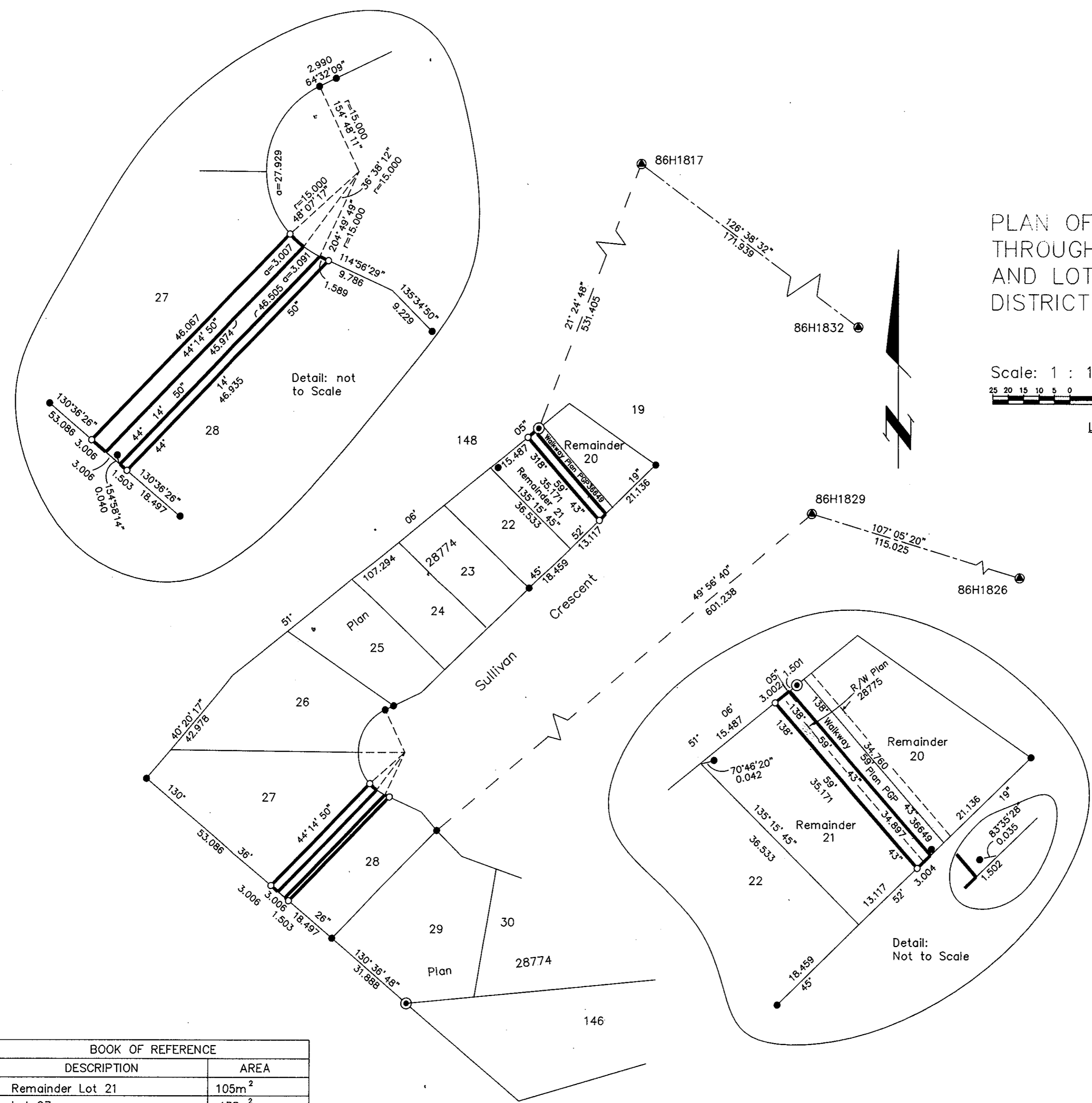
I, Gordon Kilbride, a British Columbia Land Surveyor of Prince George in British Columbia, certify that I was present at and personally superintended the survey represented by this plan and that the survey and plan are correct. The survey was completed on the 6th day of April, 1993.

Gordon Kilbride
Gordon Kilbride, B.C.L.S.

This plan lies within the Fraser-Fort George Regional District.

KILBRIDE SURVEYS
British Columbia Land Surveyors
Prince George, B.C.
Ph: (604) 562-1196 Fax: 562-3656

F.B.- TO 39	D.L.- 2003	REF. NO.- 930102-4
-------------	------------	--------------------



BOOK OF REFERENCE	
DESCRIPTION	AREA
Remainder Lot 21	105m ²
Lot 27	138m ²
Lot 28	70m ²

Note: PL. 28775 Remains inspite of overlap.