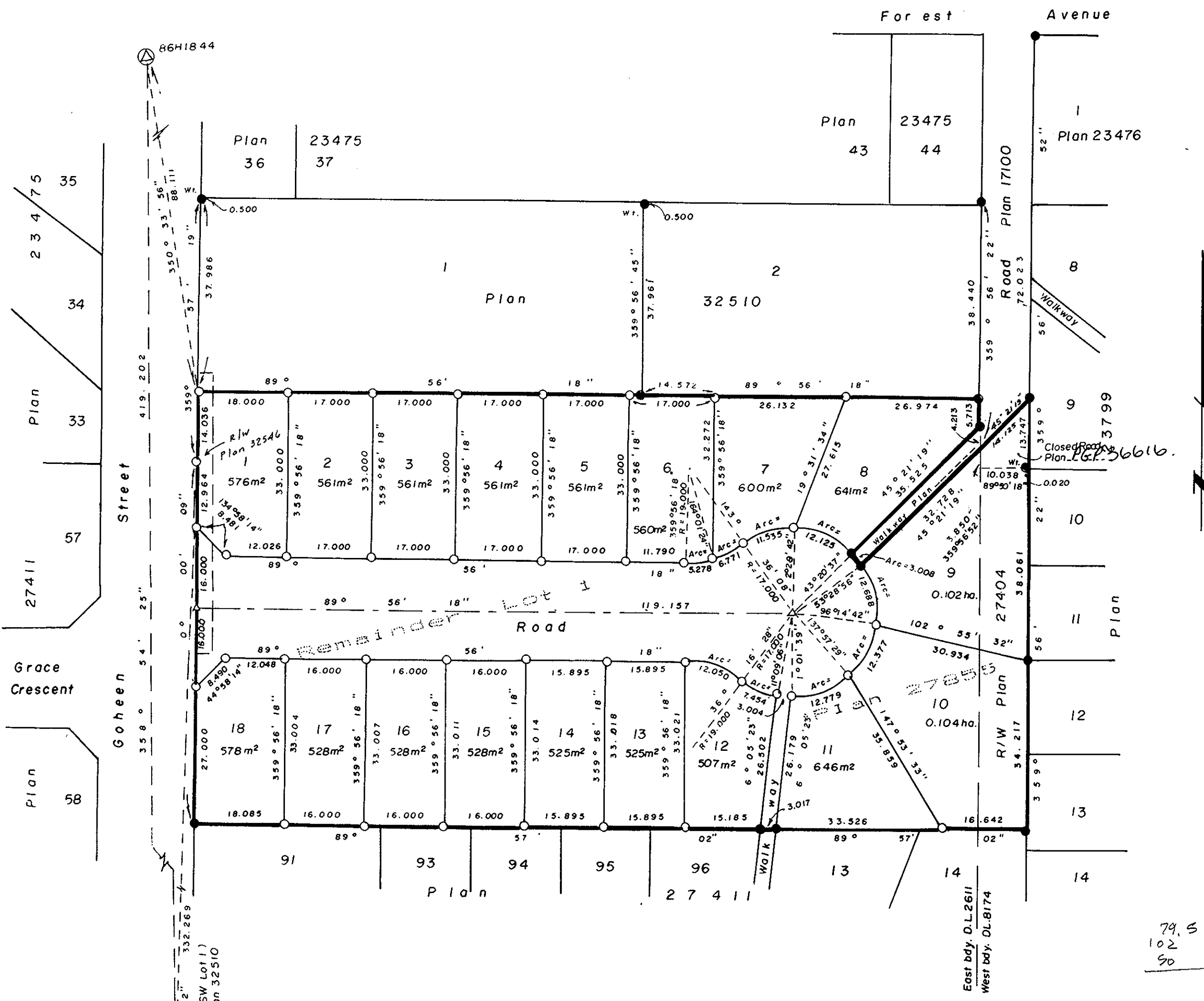
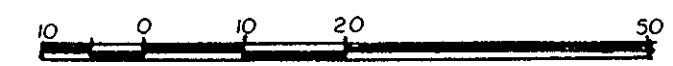


WB  
Registrar



PLAN OF SUBDIVISION OF  
REMAINDER OF LOT 1, PLAN 27855,  
D.L. 2611 AND D.L. 8174, AND CLOSED  
ROAD( ) PLAN 273616, D.L. 8174,  
CARIBOO DISTRICT.  
B.C.G.S. 936.087

Scale: 1:750 (All distances are in metres)



Grid bearings are astronomic derived from observations between Control Monuments 86H1840 and 86H1844, Integrated Survey Area number 39, City of Prince George, B.C.

Note: This plan shows ground level measured distances. Prior to computation of U.T.M. co ordinates multiply by the combined factor of 0.9995105393.

- Legend.
- Standard Iron Post placed.
  - Standard Iron Post found.
  - ⊙ Control Monument
  - △ Traverse hub.
  - Wt Witness.

I, A. Daniluck, a British Columbia Land Surveyor, of Prince George in British Columbia certify that I was present at and personally superintended the survey represented by this plan and that the survey and plan are correct. The survey was completed on the 8th day of July, 1992.

*A. Daniluck*  
A. Daniluck B.C.L.S.

Owner: City of Prince George  
*[Signature]*  
Authorized Signatory  
JOHN BACKHOUSE, Mayor  
Print Name  
*[Signature]*  
Authorized Signatory  
J.A. FORREST, City Clerk  
Print Name

Witness *[Signature]*  
to both signatures  
*[Signature]*  
Print Name  
Address 132 McLean Drive  
Prince George Postal Code V2M 4R3  
Occupation Secretary

Approved under the Land Title Act  
this 17th day of December 1992.  
*[Signature]*  
Approving Officer  
City of Prince George.

Reg approved Mar 22nd 1993  
*[Signature]*

This plan lies within the Fraser Fort  
George Regional District.

A. Daniluck,  
B.C. Land Surveyor,  
Prince George - B.C.  
REF. NO. 92 010