

REFERENCE PLAN OF CONSOLIDATION OF LOT A, PLAN PGP35939 AND LOTS 26 AND 27, BLOCK 235, PLAN 1268, DISTRICT LOT 343, CARIBOO DISTRICT.

B.C.G.S. 93G.097

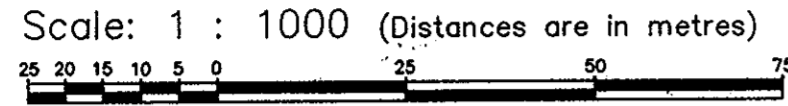
PLAN NO. PGP. 36909

Grid bearings are derived from observations between control
mouments 85H1289 and 85H1088, integrated survey area number
39, City of Prince George, B.C.

Deposited in the Land Title Office at Prince
George this 16 day of Feb. 1993.

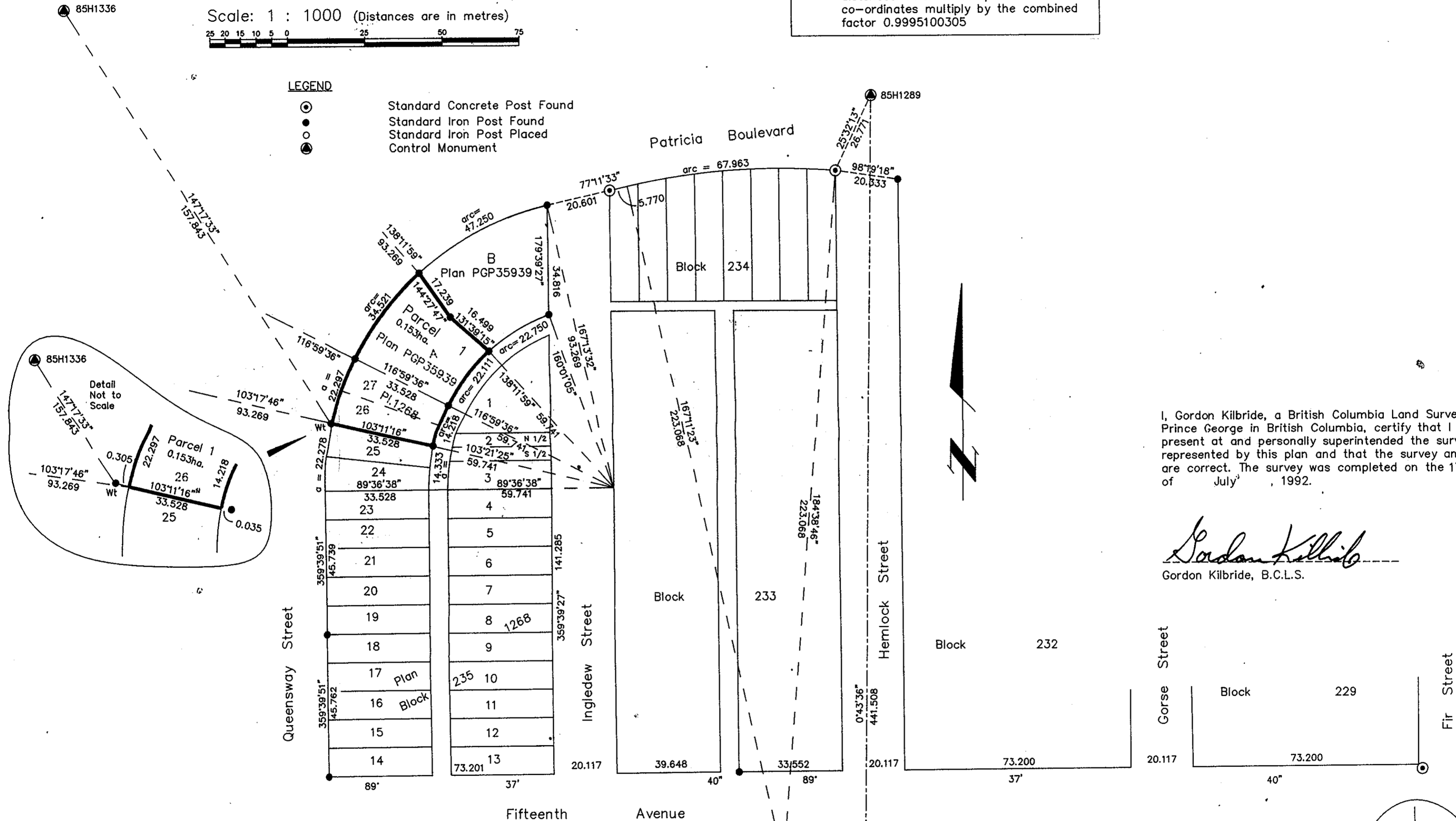
W. J. Handy per se
REGISTRAR

Note: This plan shows ground level measured
distances. Prior to computation of U.T.M.
co-ordinates multiply by the combined
factor 0.9995100305



LEGEND

- ⊙ Standard Concrete Post Found
- Standard Iron Post Found
- Standard Iron Post Placed
- ⦿ Control Monument



I, Gordon Kilbride, a British Columbia Land Surveyor of
Prince George in British Columbia, certify that I was
present at and personally superintended the survey
represented by this plan and that the survey and plan
are correct. The survey was completed on the 17th day
of July, 1992.

Gordon Kilbride
Gordon Kilbride, B.C.L.S.

Cross-Atlantic Developments Ltd. Inc# 322860

Authorized Signatory

Print Name Tony Zwiers

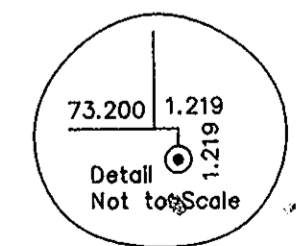
Witness *Gordon Kilbride*

Print Name Gordon Kilbride

Address 324 - Vancouver Street

Prince George, B.C. Postal Code V2L 2N9

Occupation B.C. Land Surveyors



This plan lies within the Fraser Fort
George Regional District.

KILBRIDE SURVEYS
British Columbia Land Surveyors
Prince George, B.C.
Ph: (604) 562-1196 Fax: 562-3656

F.B.- TD 25 D.L.- 343 REF. NO.- 92630