

3088

PGP36679

PLAN NO. PGP _____

Deposited in the Land Title Office at Prince George this 10 day of Nov. 1992.

PLAN OF SUBDIVISION OF PART OF LOT 2, PLAN 8960, DISTRICT LOT 2003, CARIBOO DISTRICT. B.C.G.S. 93G.087

Scale: 1 : 2000 (Distances are in metres)

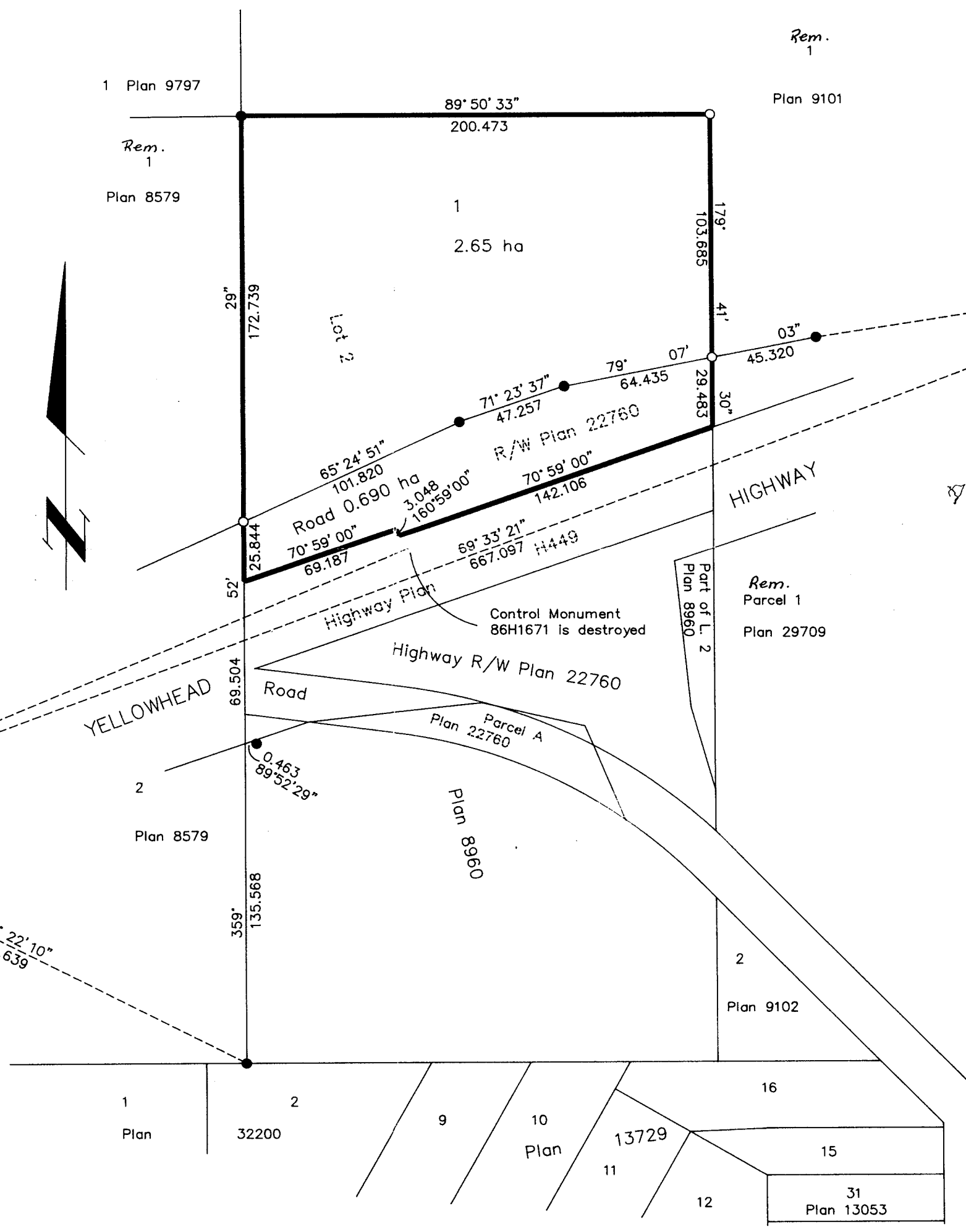


W. S. B.
REGISTRAR

Owner: The Roman Catholic Episcopal Corporation of Prince Rupert

J. S. Larkin
Authorized Signatory
J. E. LARKIN
Print Name

Witness
P. Stanger
Print Name
8252 St. John Cres.
Address
Prince George B.C. V2N 4H8
Postal Code
Bus. Mgr.
Occupation



Grid bearings are derived from observations between control monuments 86H1746 and 86H1670, integrated survey area number 39, City of Prince George, B.C.

Note: This plan shows ground level measured distances. Prior to computation of U.T.M. co-ordinates multiply by the combined factor 0.9995105393

LEGEND
● Standard Iron Post Found
○ Standard Iron Post Placed
⊙ Control Monument

I, Gordon Kilbride, a British Columbia Land Surveyor of Prince George in British Columbia, certify that I was present at and personally superintended the survey represented by this plan and that the survey and plan are correct. The survey was completed on the 5 day of October, 1992.

Gordon Kilbride
Gordon Kilbride, B.C.L.S.

Approved under the Land Title Act this 3 day of November 1992.
[Signature]
Approving Officer
Ministry of Transportation & Highways

Approved under the Land Title Act this 30th day of October 1992.
[Signature]
Approving Officer
City of Prince George.

This plan lies within the Fraser Fort George Regional District.

KILBRIDE SURVEYS		
British Columbia Land Surveyors		
Prince George, B.C.		
Ph: (604) 562-1196 Fax: 562-3656		
F.B.- TY 2	D.L.- 2003	REF. NO.- 92775