

~~SD 1487~~ GH

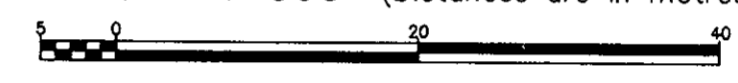
PLAN NO. PGP 36563

Deposited in the Land Title Office at Prince George this day of 199 .

REGISTRAR

PLAN OF SUBDIVISION OF LOT A, PLAN 24415 AND PART OF LOT 1, PLAN 14788, DISTRICT LOT 1433, CARIBOO DISTRICT. B.C.G.S. 93G.087

Scale: 1 : 500 (Distances are in metres)



Note: This plan shows ground level measured distances. Prior to computation of U.T.M. co-ordinates multiply by the combined factor 0.9995105393

Grid bearings are derived from observations between control mounments 86H1849 and 86H1838, integrated survey area number 39, City of Prince George, B.C.

LEGEND

- Standard Iron Post Found
- Standard Iron Post Placed
- ⊙ Control Monument

I, Gordon Kilbride, a British Columbia Land Surveyor of Prince George in British Columbia, certify that I was present at and personally superintended the survey represented by this plan and that the survey and plan are correct. The survey was completed on the 19th day of May, 1992

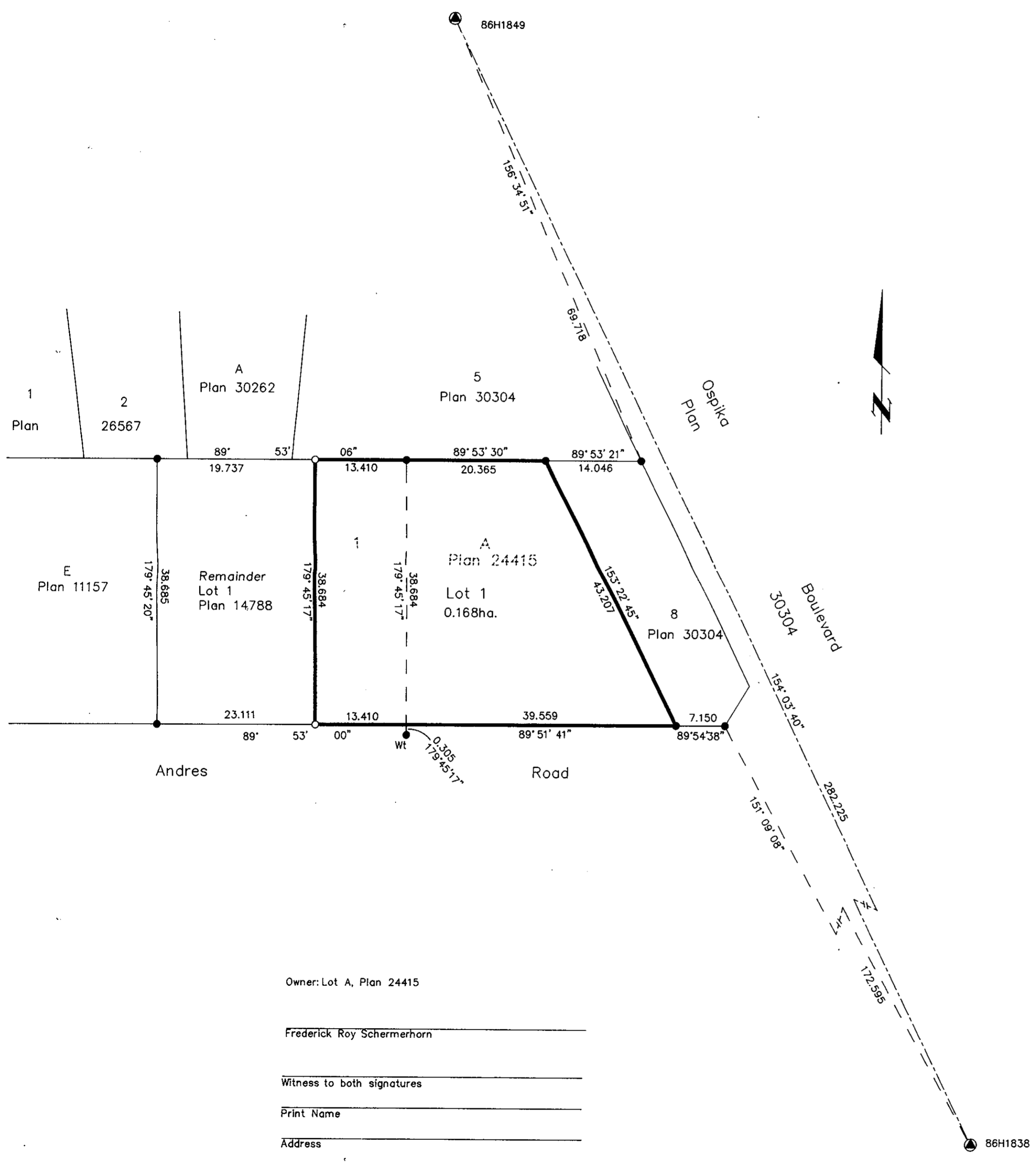
Gordon Kilbride
Gordon Kilbride, B.C.L.S.

Approval is conditional upon there being concurrent registration of an easement over the newly created parcel.

Approved under the Land Title Act this ^{2nd} day of June, 1992

George Halliday
Approving Officer
City of Prince George

This plan lies within the Fraser-Fort George Regional District.



Owner: Lot A, Plan 24415

Frederick Roy Schermerhorn

Witness to both signatures

Print Name

Address

Postal Code

Occupation

KILBRIDE SURVEYS British Columbia Land Surveyors Prince George, B.C. Ph: (604) 562-1196 Fax: 562-3656		
F.B.- SZ 70	D.L.- 1433	REF. NO.- 92200