

REFERENCE PLAN OF CONSOLIDATION OF
LOTS 11,12,13, REM. 14, REM. 34
AND 35 TO 43 INCLUSIVE
BLOCK 45, PLAN 902
DISTRICT LOT 629,
CARIBOO DISTRICT

PLAN No. PGP _____

DEPOSITED IN THE LAND TITLE OFFICE
AT PRINCE GEORGE, B.C., THIS 18th
DAY OF SEPT., 1999

R.L. Johns
REGISTRAR

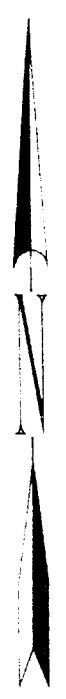
SCALE 1 : 1000 B.C.G.S. 93G.097
0 10 20 30 40 50 60 70 80 90 100

GRID BEARINGS ARE DERIVED FROM OBSERVATIONS
BETWEEN CONTROL MONUMENTS 85H1260 AND 85H1257,
INTEGRATED SURVEY AREA NUMBER 39.
ALL DISTANCES ARE SHOWN IN METRES.

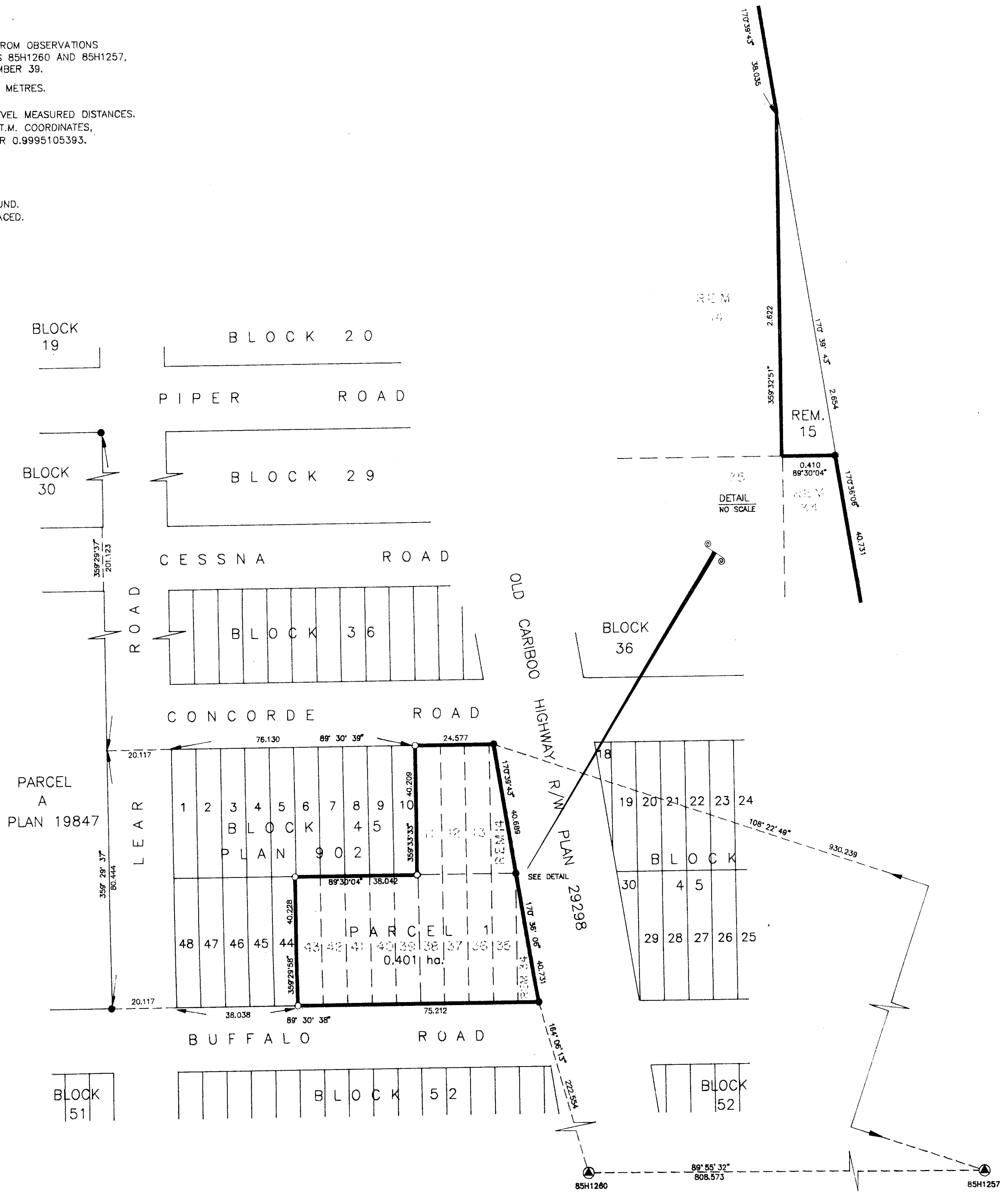
THIS PLAN SHOWS GROUND-LEVEL MEASURED DISTANCES.
PRIOR TO COMPUTATION OF U.T.M. COORDINATES,
MULTIPLY BY COMBINED FACTOR 0.9995105393.

LEGEND

- STANDARD IRON POST FOUND.
- STANDARD IRON POST PLACED.
- ▲ CONTROL MONUMENT.



D. L. 629



I, RONALD L. JOHNS, A BRITISH COLUMBIA LAND SURVEYOR, OF PRINCE GEORGE, IN BRITISH COLUMBIA, CERTIFY THAT I WAS PRESENT AT AND PERSONALLY SUPERINTENDED THE SURVEY REPRESENTED BY THIS PLAN AND THAT THE SURVEY AND PLAN ARE CORRECT. THE SURVEY WAS COMPLETED ON THE 6TH DAY OF NOVEMBER, 1991.

R.L. Johns
R.L. JOHNS, B.C.L.S.

OWNER *Don Palmer*
DON PALMER
PRINT NAME

OWNER *Donovan Palmer*
DONOVAN PALMER
PRINT NAME

WITNESS (AS TO BOTH SIGNATURES) *R.L. Johns*
RON JOHNS
PRINT NAME

240 VICTORIA STREET
ADDRESS
PRINCE GEORGE, B.C.
B.C. LAND SURVEYOR
OCCUPATION

THIS PLAN LIES WITHIN THE FRASER-FORT GEORGE REGIONAL DISTRICT.

R.L. JOHNS & ASSOCIATES
LEGAL AND ENGINEERING SURVEYS
240 VICTORIA STREET
PRINCE GEORGE, B.C. V2L 2J4
(604) 582-5759