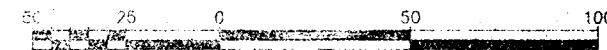


Deposited in the Land Title Office at Prince George this 17 day of SEPT 1992

W.A. Handy
REGISTRAR

PLAN OF SUBDIVISION OF PART OF
REMAINDER OF LOT 2, PLAN 10543,
DISTRICT LOT 2003 AND PART OF
PARCEL A (J7598), BLOCK 1,
PLAN 1065, DISTRICT LOT 1605,
CARIBOO DISTRICT. B.C.G.S. 936.087

Scale: 1 : 2000 (Distances are in metres)

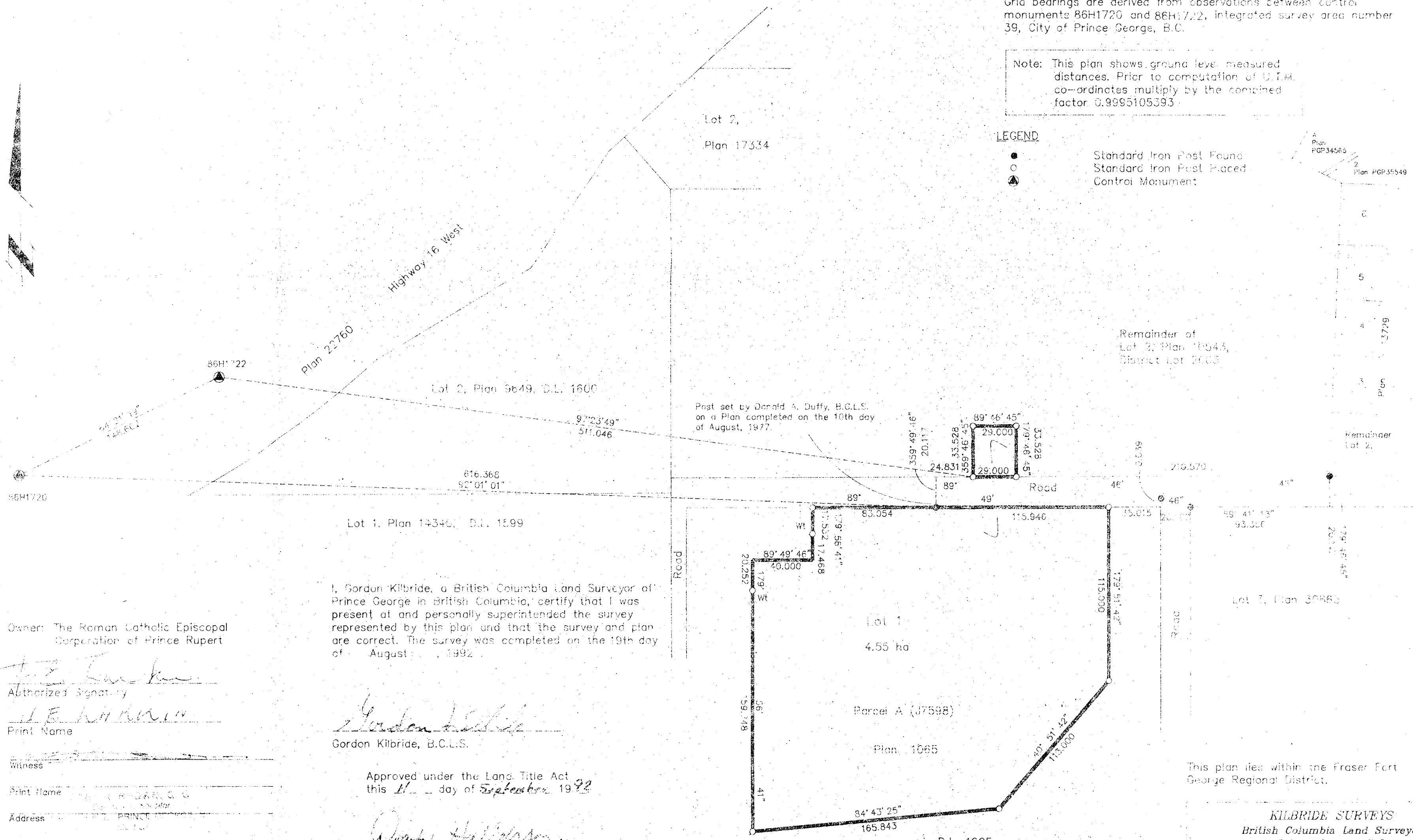


Grid bearings are derived from observations between control monuments 86H1720 and 86H1722, integrated survey area number 39, City of Prince George, B.C.

Note: This plan shows ground level measured distances. Prior to computation of U.T.M. co-ordinates multiply by the combined factor 0.9995105393.

LEGEND

- Standard Iron Post Found
- Standard Iron Post Placed
- ▲ Control Monument



Owner: The Roman Catholic Episcopal Corporation of Prince Rupert

[Signature]
Authorized Signatory

[Signature]
Print Name

Witness

Print Name

Address

Postal Code

Occupation

I, Gordon Kilbride, a British Columbia Land Surveyor of Prince George in British Columbia, certify that I was present at and personally superintended the survey represented by this plan and that the survey and plan are correct. The survey was completed on the 19th day of August, 1992.

[Signature]
Gordon Kilbride, B.C.L.S.

Approved under the Land Title Act
this 11 day of September 1992

[Signature]
Approving Officer
City of Prince George.

This plan lies within the Fraser Fort George Regional District.

KILBRIDE SURVEYS
British Columbia Land Surveyors
Prince George, B.C.

Ph: (804) 562-1196 Fax: 562-3656

F.B.- TN 15 D.L.- 1605 REF. NO.- 92855A