

Deposited in the Land Title Office at Prince George this 28 day of July 1992.

W.G.G.  
REGISTRAR

PLAN OF SUBDIVISION OF  
LOTS 38, 39, AND 40, BLOCK  
117, PLAN 1268, DISTRICT  
LOT 343, CARIBOO DISTRICT.

B.C.G.S. 93G.097

Scale: 1 : 750 (Distances are in metres)

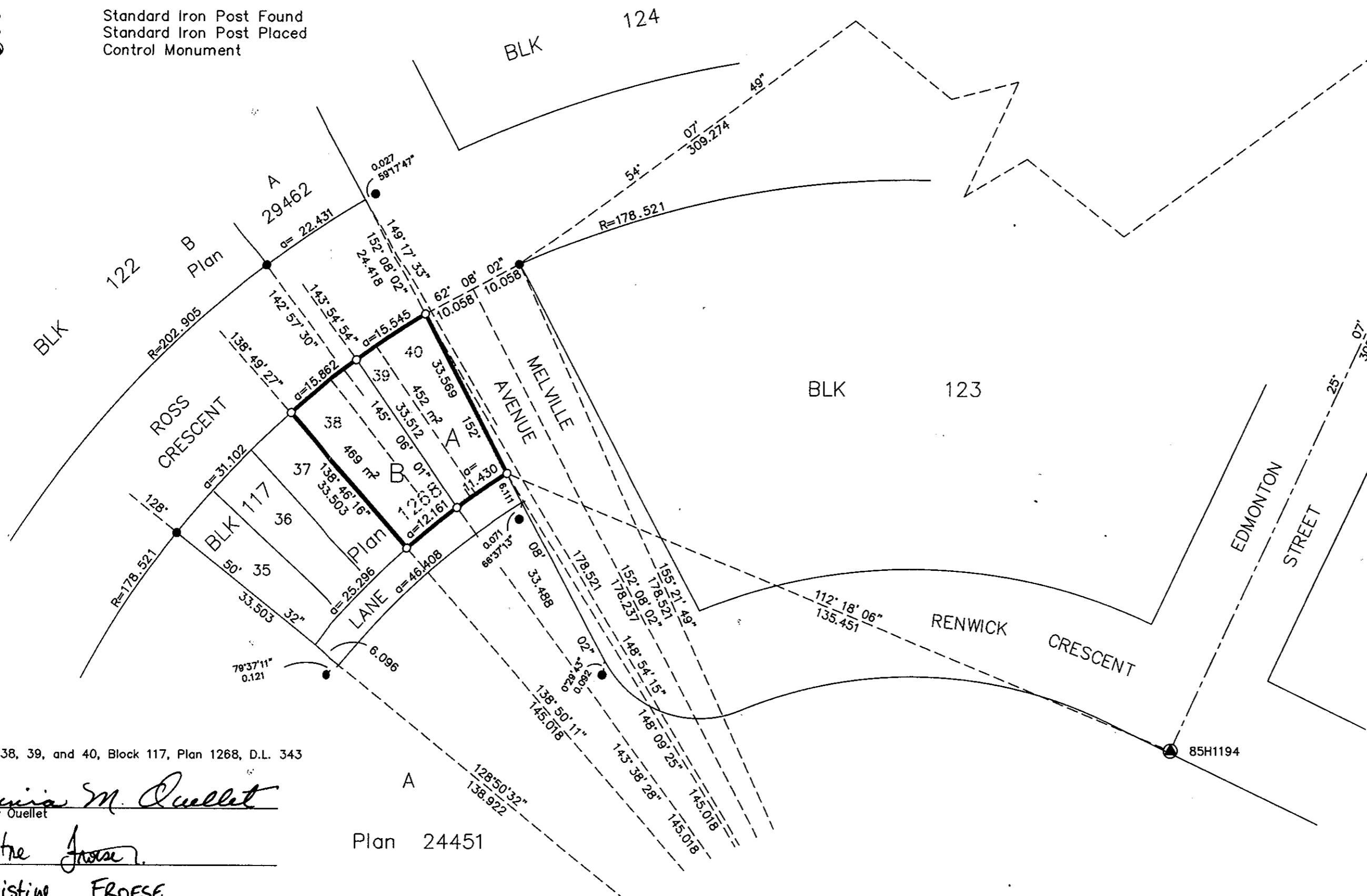


Note: This plan shows ground level measured distances. Prior to computation of U.T.M. co-ordinates multiply by the combined factor 0.9995105393

Grid bearings are derived from observations between control monuments 85H1194 and 85H1299, integrated survey area number 39, City of Prince George, B.C.

LEGEND

- Standard Iron Post Found
- Standard Iron Post Placed
- ⊙ Control Monument



I, Gordon Kilbride, a British Columbia Land Surveyor of Prince George in British Columbia, certify that I was present at and personally supervised the survey represented by this plan and that the survey and plan are correct. The survey was completed on the 16th day of July, 1992.

*Gordon Kilbride*  
Gordon Kilbride, B.C.L.S.

Approved under the Land Title Act this 28 day of July, 1992

*E. Mueller*  
Approving Officer  
City of Prince George

Owner: Lots 38, 39, and 40, Block 117, Plan 1268, D.L. 343

*Lavinia M. Ouellet*  
Lavinia Mary Ouellet

*Christine Froese*  
Witness

Print Name: *Christine FROESE*

Address: 9624-87 st.

FORT ST. JOHN, BC V1J4X8  
Postal Code

Occupation: Student.

Plan 24451

This plan lies within the Fraser-Fort George Regional District.

<b>KILBRIDE SURVEYS</b> British Columbia Land Surveyors Prince George, B.C. Ph: (604) 562-1196 Fax: 562-3656		
F.B.- TH 37	D.L.- 343	REF. NO.- 92544