

Deposited in the Land Title Office at Prince George this 30 day of June 1992

W.G. Gandy REGISTRAR

PLAN OF SUBDIVISION OF REMAINDER OF DISTRICT LOT 4221, CARIBOO DISTRICT.

B.C.G.S. 93G.097

Scale: 1 : 2000 (Distances are in metres)

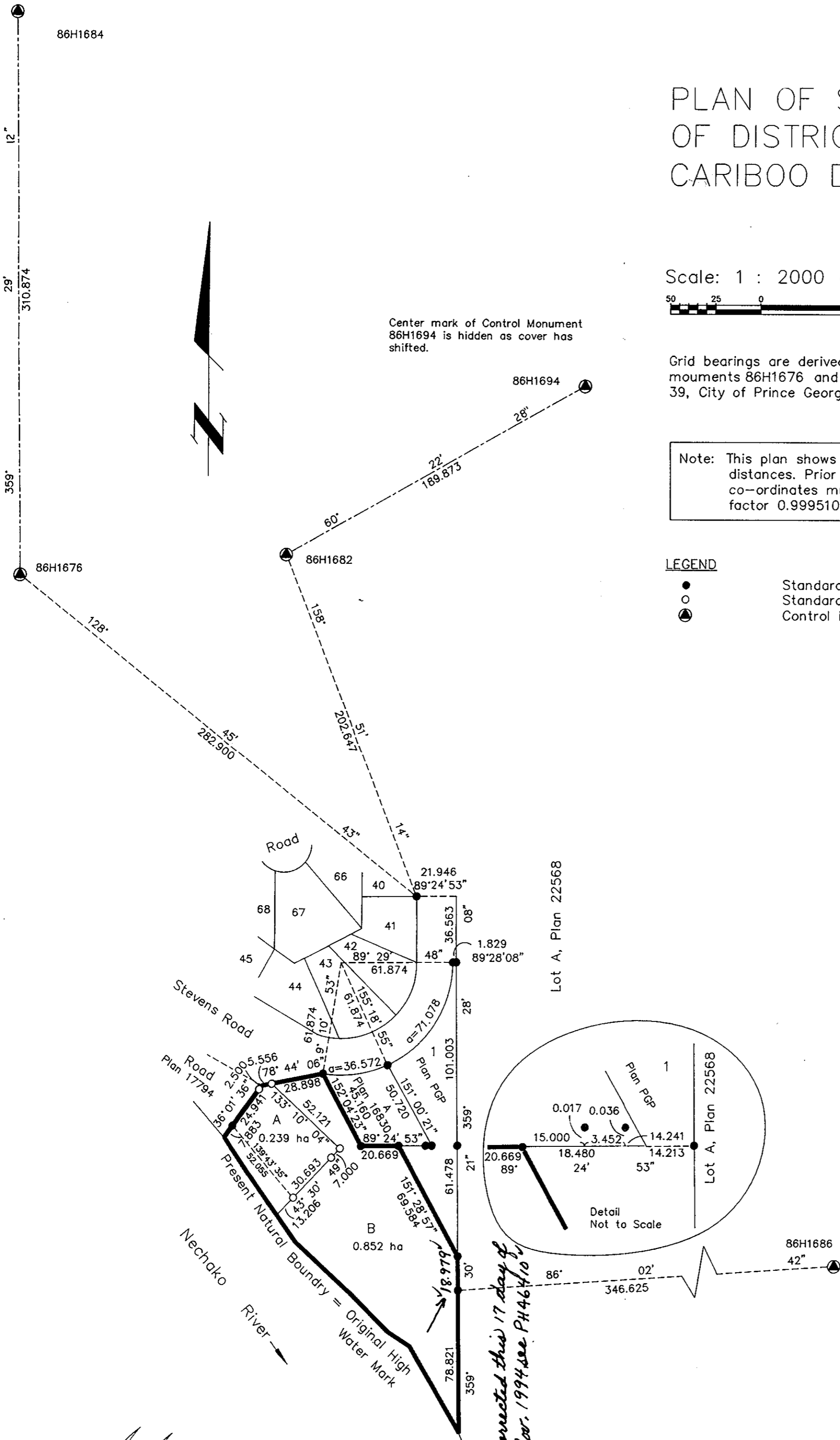


Grid bearings are derived from observations between control monuments 86H1676 and 86H1684, integrated survey area number 39, City of Prince George, B.C.

Note: This plan shows ground level measured distances. Prior to computation of U.T.M. co-ordinates multiply by the combined factor 0.9995105393

LEGEND

- Standard Iron Post Found
Standard Iron Post Placed
Control Monument



Corrected this 17 day of Nov. 1994 see PH46/10

The registered owner designated hereon declares that he has entered into a covenant in favour of the Ministry of Environment, Lands and Parks under section 215 of the Land Title Act.

I, Gordon Kilbride, a British Columbia Land Surveyor of Prince George in British Columbia, certify that I was present at and personally superintended the survey represented by this plan and that the survey and plan are correct. The survey was completed on the 26 day of May, 1992.

Gordon Kilbride
Gordon Kilbride, B.C.L.S.

Owner: Sylvia Rose Swanky
Witness: J. Robert Leverman
Print Name: J. Robert Leverman
Address: 200-444 Victoria Street, Prince George, B.C. V2L 2J7
Occupation: Barrister and Solicitor

Approved under the Land Title Act this 22 day of JUNE 19 92
Approving Officer: Wayne Halliday
City of Prince George.

This plan lies within the Fraser Fort George Regional District.

Table with surveyor details: KILBRIDE SURVEYS, British Columbia Land Surveyors, Prince George, B.C. Ph: (604) 562-1196 Fax: 562-3656. Includes fields for F.B.- RA, D.L.- 4221, and REF. NO.- 91532.