

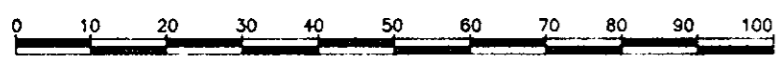
PLAN OF SUBDIVISION OF
 LOT 1, BLOCK A, PLAN 15401
 DISTRICT LOT 4377
 CARIBOO DISTRICT

PGP36289
 PLAN No. PGP

DEPOSITED IN THE LAND TITLE OFFICE
 AT PRINCE GEORGE, B.C., THIS 16th
 DAY OF JUNE, 1992.

W. M. Landy
 REGISTRAR

SCALE 1 : 1000 B.C.G.S. 93G.097



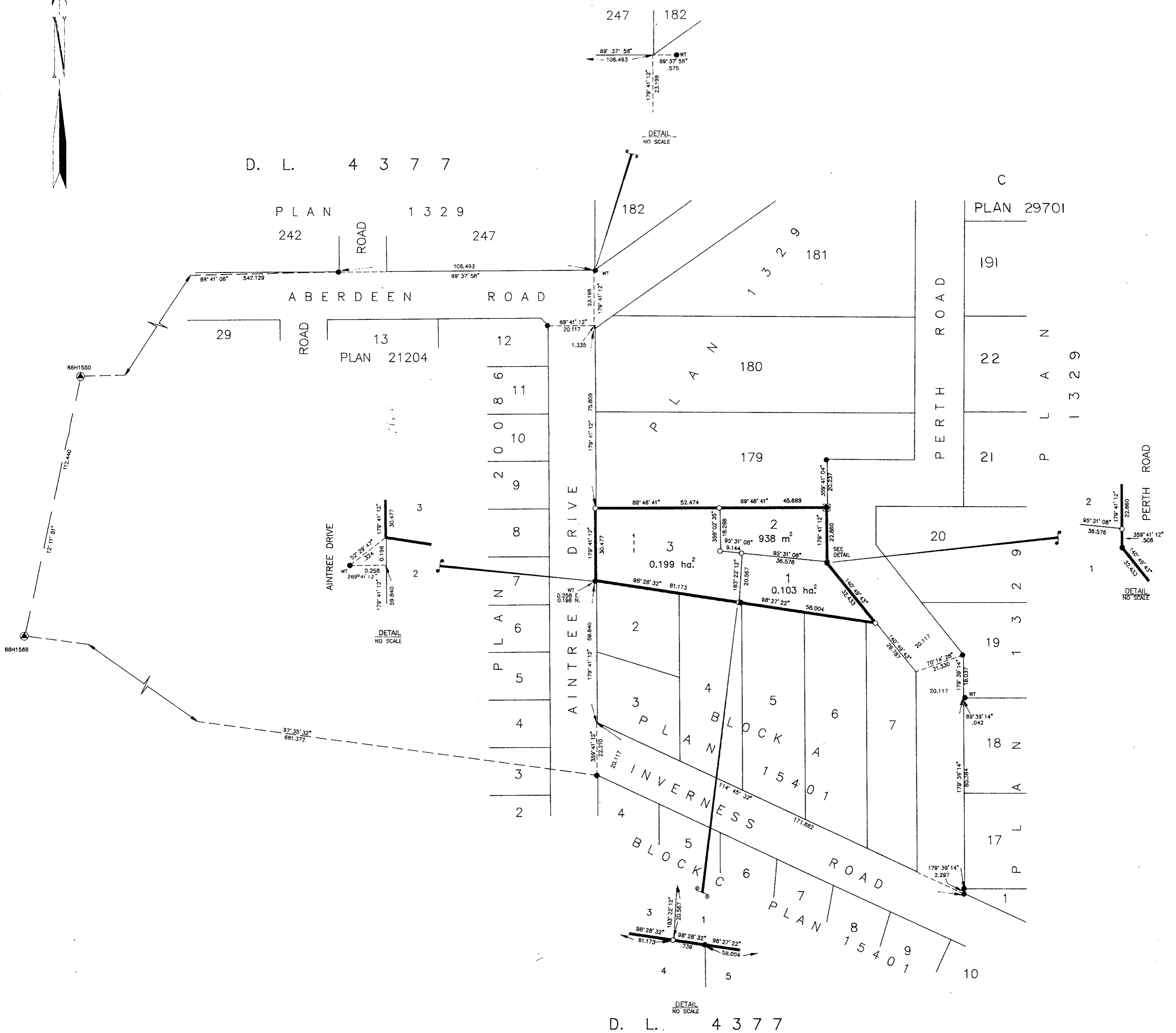
GRID BEARINGS ARE DERIVED FROM OBSERVATIONS
 BETWEEN CONTROL MONUMENTS 86H1550 AND 86H1568,
 INTEGRATED SURVEY AREA NUMBER 39.

THIS PLAN SHOWS GROUND-LEVEL MEASURED DISTANCES.
 PRIOR TO COMPUTATION OF U.T.M. COORDINATES,
 MULTIPLY BY COMBINED FACTOR 0.9995105393.

DISTANCES ARE SHOWN IN METRES.

LEGEND

- STANDARD IRON POST FOUND.
- STANDARD IRON POST PLACED.
- ▲ CONTROL MONUMENT FOUND.
- NON-STANDARD ROUND IRON POST FOUND.



APPROVED UNDER THE LAND TITLE ACT
 THIS 20th DAY OF May, 1992.

Quayle Hallstrom
 APPROVING OFFICER, CITY OF PRINCE GEORGE.

OWNER: LORNE MALCOLM ALDRED
 OWNER: OUVÉ MYRTLE ALDRED
 WITNESS (AS TO BOTH SIGNATURES)
 PRINT NAME
 ADDRESS
 OCCUPATION

THIS PLAN LIES WITHIN THE FRASER-
 FORT GEORGE REGIONAL DISTRICT.

R.L. JOHNS & ASSOCIATES
 LEGAL AND ENGINEERING SURVEYS
 240 VICTORIA STREET
 PRINCE GEORGE, B.C. V2L 2J4
 (804) 562-5759

I, RONALD L. JOHNS, A BRITISH COLUMBIA LAND
 SURVEYOR, OF PRINCE GEORGE, IN BRITISH COLUMBIA,
 CERTIFY THAT I WAS PRESENT AT AND PERSONALLY
 SUPERINTENDED THE SURVEY REPRESENTED BY THIS
 PLAN AND THAT THE SURVEY AND PLAN ARE CORRECT.
 THE SURVEY WAS COMPLETED ON THE 24TH DAY OF
 MARCH, 1992.

R.L. Johns
 R.L. JOHNS, B.C.L.S.