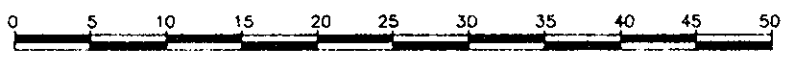


PLAN OF SUBDIVISION OF  
 LOT 19, PLAN 25839, AND LOT 9,  
 PLAN 24336, DISTRICT LOT 4046.  
 CARIBOO DISTRICT.

PGP36267  
 PLAN No. PGP -----  
 DEPOSITED IN THE LAND TITLE OFFICE  
 AT PRINCE GEORGE, B.C., THIS 9<sup>th</sup>  
 DAY OF June 1992  
 REGISTRAR W.B.B.

SCALE 1 : 500 B.C.G.S. 93G.097

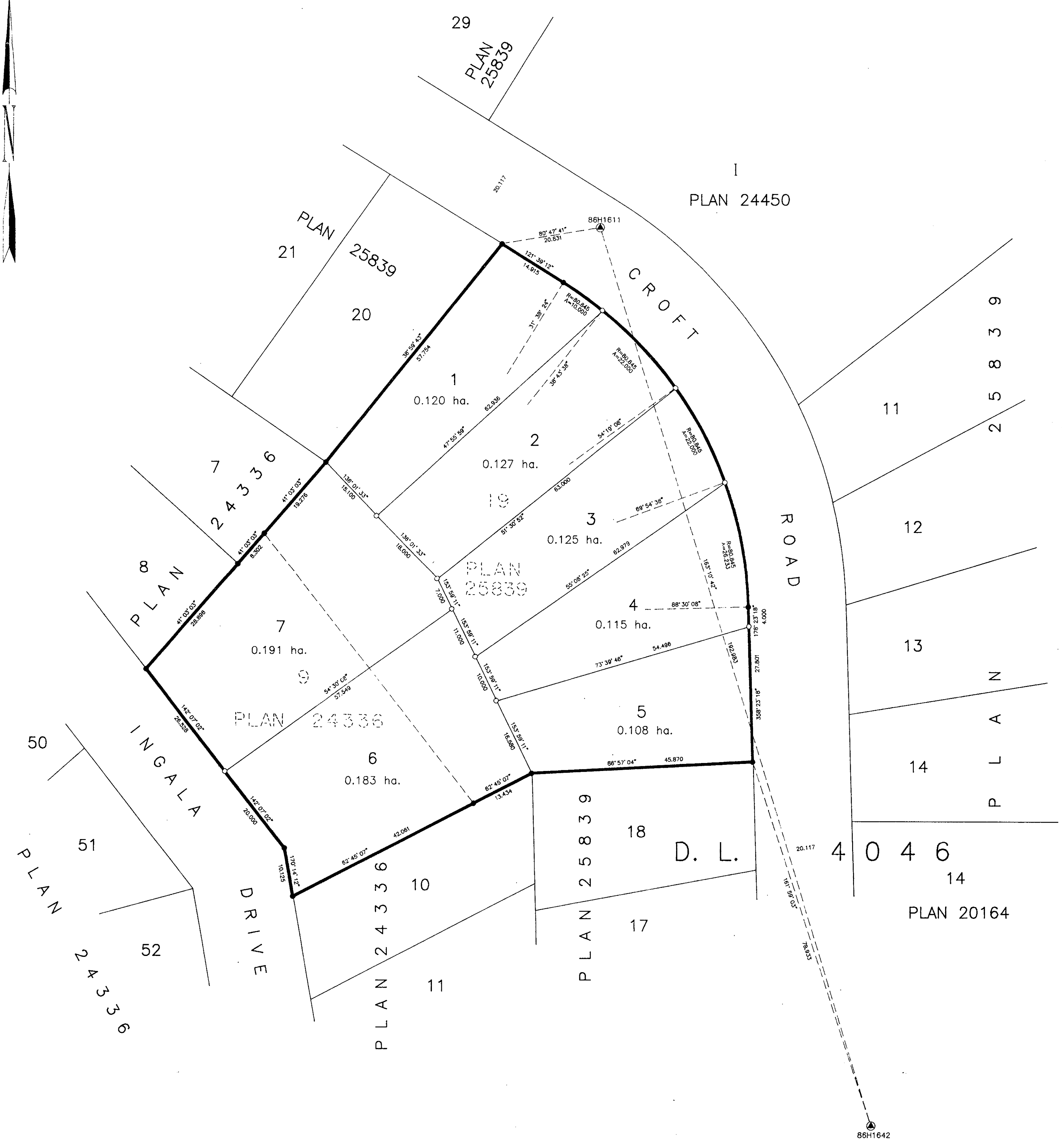


ALL DISTANCES ARE MEASURED IN METRES.  
 GRID BEARINGS ARE DERIVED FROM OBSERVATIONS  
 BETWEEN CONTROL MONUMENTS 86H1642 AND 86H1611.  
 INTEGRATED SURVEY AREA NUMBER 39.

THIS PLAN SHOWS GROUND-LEVEL MEASURED DISTANCES.  
 PRIOR TO COMPUTATION OF U.T.M. COORDINATES,  
 MULTIPLY BY COMBINED FACTOR 0.9995105393.

LEGEND

- STANDARD IRON POST FOUND.
- STANDARD IRON POST PLACED.
- ⊙ CONTROL MONUMENT FOUND.



PUMA VENTURES LTD.

\_\_\_\_\_  
 AUTHORIZED SIGNATORY  
 MARTIN HERBERT  
 PRINT NAME  
 \_\_\_\_\_  
 AUTHORIZED SIGNATORY  
 JACOB HERBERT  
 PRINT NAME  
 \_\_\_\_\_  
 WITNESS (AS TO BOTH SIGNATURES)  
 KRES Filipovic  
 PRINT NAME  
 1829 N. Meadow Pl  
 ADDRESS  
 PRINCE GEORGE B.C.  
 TECHNOLOGIST  
 OCCUPATION

APPROVED UNDER THE LAND TITLE ACT  
 THIS 20<sup>th</sup> DAY OF May 1992

\_\_\_\_\_  
 APPROVING OFFICER, CITY OF PRINCE GEORGE.

I, RONALD L. JOHNS, A BRITISH COLUMBIA LAND SURVEYOR, OF PRINCE GEORGE, IN BRITISH COLUMBIA, CERTIFY THAT I WAS PRESENT AT AND PERSONALLY SUPERINTENDED THE SURVEY REPRESENTED BY THIS PLAN AND THAT THE SURVEY AND PLAN ARE CORRECT. THE SURVEY WAS COMPLETED ON THE 6TH DAY OF APRIL, 1992.

\_\_\_\_\_  
 R.L. JOHNS, B.C.L.S.

THIS PLAN LIES WITHIN THE FRASER-FORT GEORGE REGIONAL DISTRICT.

R.L. JOHNS & ASSOCIATES  
 LEGAL AND ENGINEERING SURVEYS  
 240 VICTORIA STREET  
 PRINCE GEORGE, B.C. V2L 2J4  
 (604) 562-5759