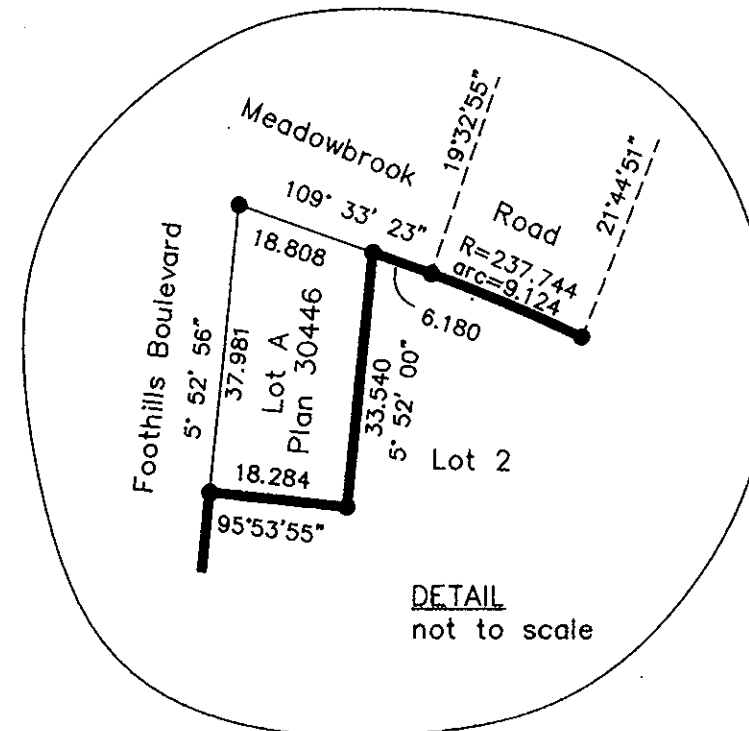


Deposited in the Land Title Office at Prince George this 26 day of Feb 1992.

W.G.G.
REGISTRAR



PLAN OF SUBDIVISION OF PART OF REMAINDER OF SOUTH 1/2 DISTRICT LOT 4050, CARIBOO DISTRICT.

B.C.G.S. 93G.096

Scale: 1 : 2000 (Distances are in metres)



Note: This plan shows ground level measured distances. Prior to computation of U.T.M. co-ordinates multiply by the combined factor 0.9995105393

Grid bearings are derived from observations between control mounments 86H1759 and 86H1751, integrated survey area number 39, City of Prince George, B.C.

LEGEND

- Standard Iron Post Found
- ⊙ Control Monument
- Standard Iron Post Placed

I, Dale L. Keown, a British Columbia Land Surveyor of Prince George in British Columbia, certify that I was present at and personally superintended the survey represented by this plan and that the survey and plan are correct. The survey was completed on the 21st day of January, 1992.

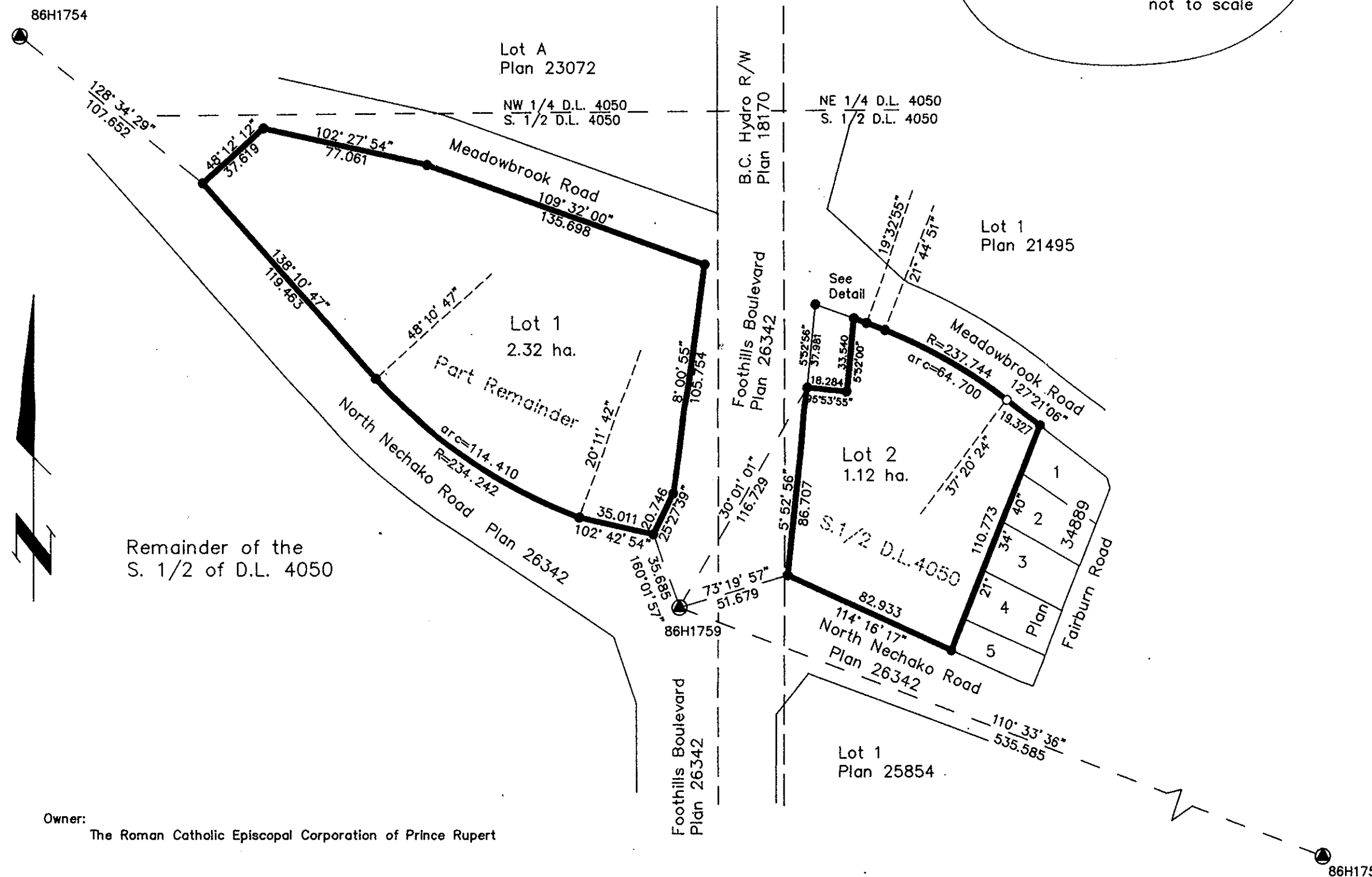
Dale Keown
Dale L. Keown, B.C.L.S.

Approved under the Land Title Act this 21st of February, 1992

C.E. Obit
Approving Officer
City of Prince George

This plan lies within the Fraser-Fort George Regional District.

KILBRIDE SURVEYS British Columbia Land Surveyors Prince George, B.C. Ph: (604) 562-1196 Fax: 562-3656		
F.B.- TG 7	D.L.- 4050	REF. NO.- 92032



Owner:
The Roman Catholic Episcopal Corporation of Prince Rupert

Authorized Signatory
J.E. Larkin
Print Name
J.E. LARKIN
Authorized Signatory
Print Name
C. Stringer
Witness to both signatures
C. Stringer
Print Name
8252 St. John Cres.
Address
Prince George B.C. V2N 4N8
Postal Code
Bus. Mgr.
Occupation