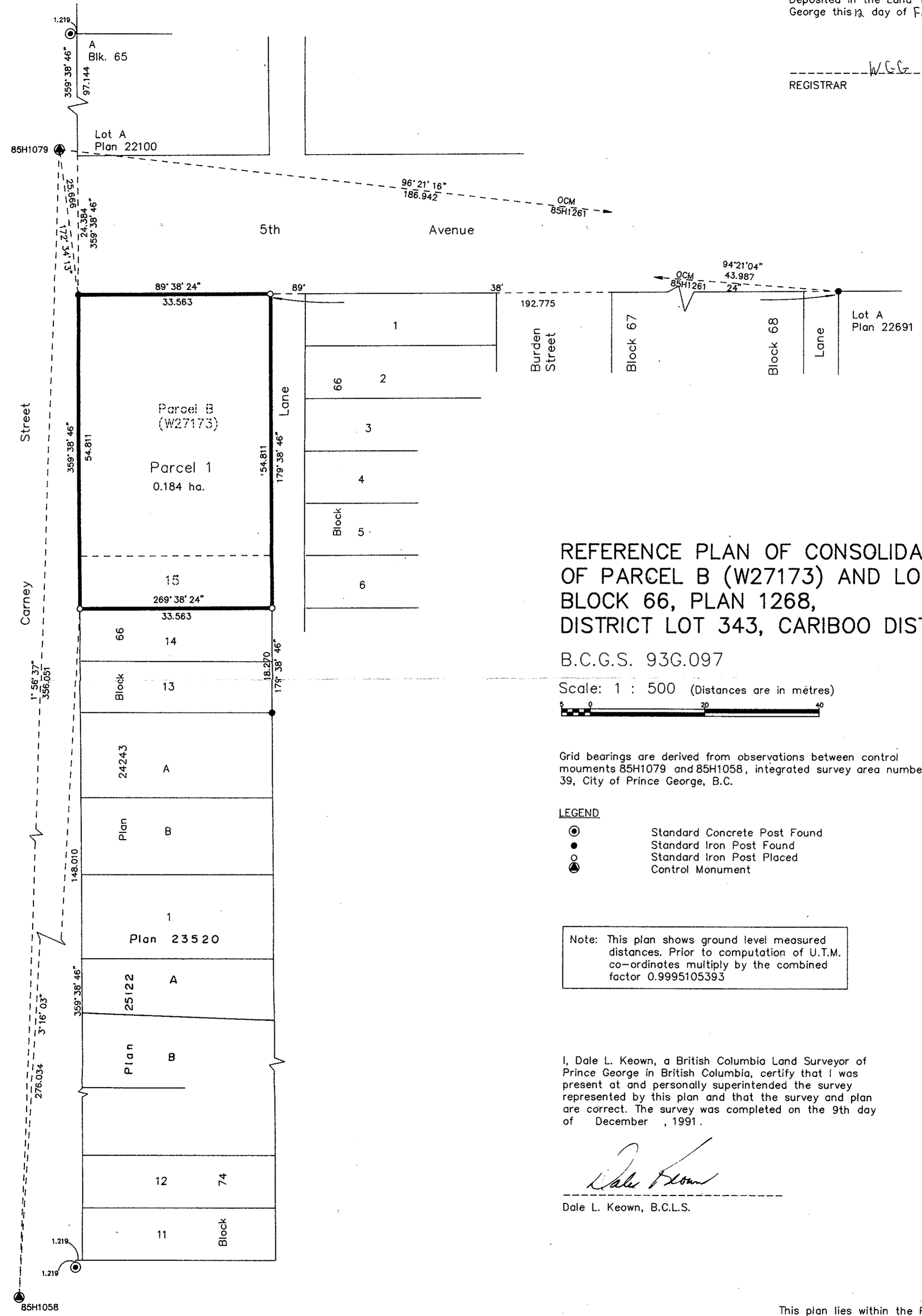


HM

PLAN NO. PGP 36006

Deposited in the Land Title Office at Prince George this 12 day of Feb 1992.

REGISTRAR *W.C.G.*



REFERENCE PLAN OF CONSOLIDATION OF PARCEL B (W27173) AND LOT 15, BLOCK 66, PLAN 1268, DISTRICT LOT 343, CARIBOO DISTRICT.

017676541

B.C.G.S. 93G.097

Scale: 1 : 500 (Distances are in metres)



Grid bearings are derived from observations between control monuments 85H1079 and 85H1058, integrated survey area number 39, City of Prince George, B.C.

LEGEND

- ⊙ Standard Concrete Post Found
- Standard Iron Post Found
- Standard Iron Post Placed
- ⊕ Control Monument

Note: This plan shows ground level measured distances. Prior to computation of U.T.M. co-ordinates multiply by the combined factor 0.9995105393

I, Dale L. Keown, a British Columbia Land Surveyor of Prince George in British Columbia, certify that I was present at and personally superintended the survey represented by this plan and that the survey and plan are correct. The survey was completed on the 9th day of December, 1991.

Dale Keown

Dale L. Keown, B.C.L.S.

This plan lies within the Fraser-Fort George Regional District.

KILBRIDE SURVEYS		
<i>British Columbia Land Surveyors</i>		
Prince George, B.C.		
Ph: (604) 562-1196 Fax: 562-3656		
F.B.- SZ 26	D.L.- 343(Blk.66)	REF. NO.- 91946