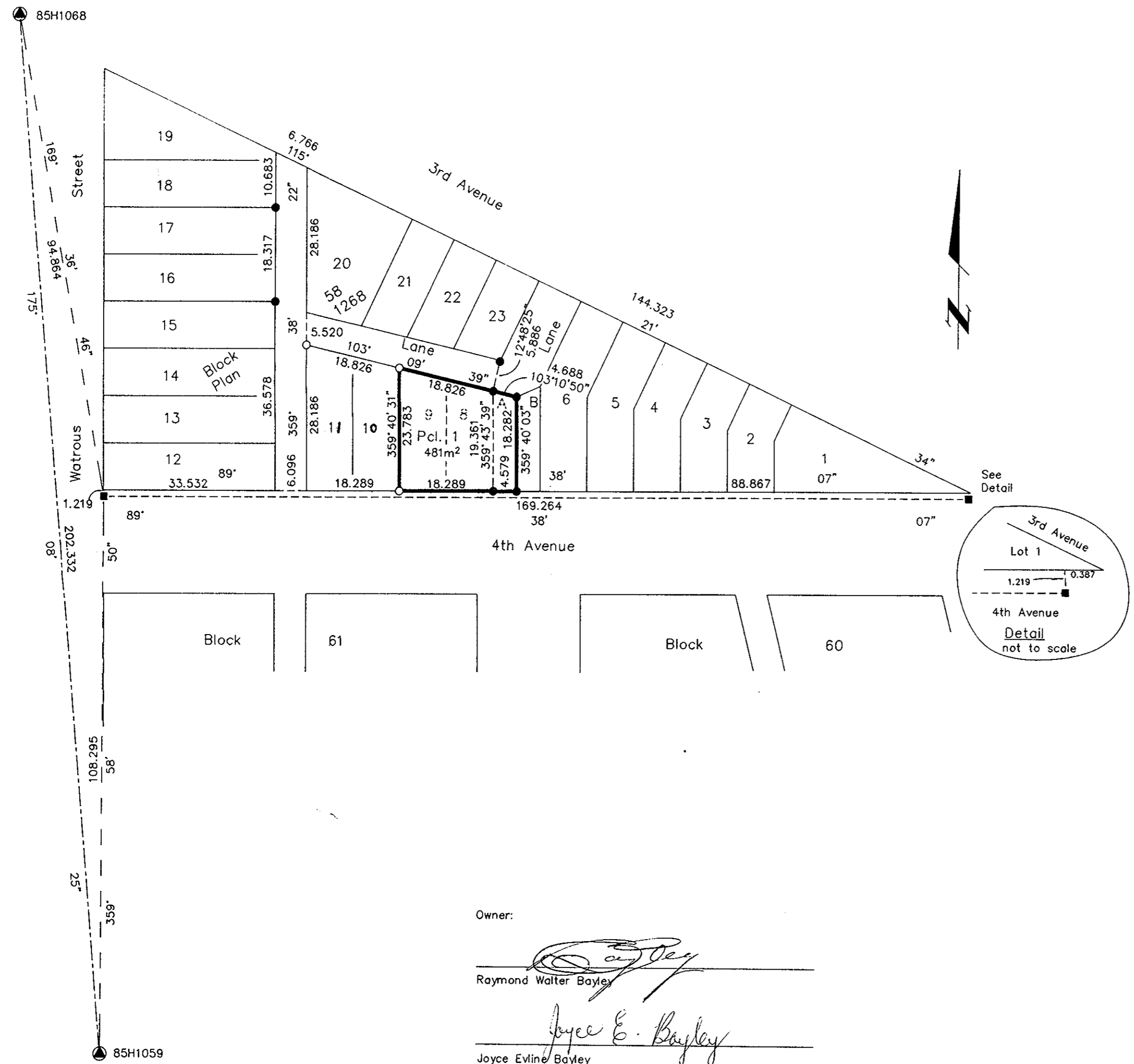


HM

PLAN NO. PGP 35815

Deposited in the Land Title Office at Prince George this 29 day of Nov. 1991.

W.G.G.
REGISTRAR



REFERENCE PLAN OF CONSOLIDATION
OF LOT A, PLAN 18917 AND
LOTS 8 AND 9, BLOCK 58, PLAN 1268,
DISTRICT LOT 343, CARIBOO DISTRICT.
B.C.G.S. 93G . 097

Scale: 1 : 750 (Distances are in metres)
15 10 5 0 25 50

Grid bearings are derived from observations between control monuments 85H1068 and 85H1059, integrated survey area number 39, City of Prince George, B.C.

- LEGEND**
- Lead Plug Found
 - Standard Iron Post Found
 - Standard Iron Post Placed
 - ⊙ Control Monument

Note: This plan shows ground level measured distances. Prior to computation of U.T.M. co-ordinates multiply by the combined factor 0.9995105393

I, Gordon Kilbride, a British Columbia Land Surveyor of Prince George in British Columbia, certify that I was present at and personally superintended the survey represented by this plan and that the survey and plan are correct. The survey was completed on the 25th day of September, 1991.

Gordon Kilbride
Gordon Kilbride, B.C.L.S.

Owner:
Raymond Walter Bayley
Raymond Walter Bayley
Joyce E. Bayley
Joyce Evline Bayley
W. Bergeron
Witness to both signatures.
Wendy Bergeron
Print Name
7646 Kaslo Street
Address
Prince George, BC V2L 1P7
Postal Code
Secretary
Occupation

This plan lies within the Fraser-Fort George Regional District.

KILBRIDE SURVEYS
British Columbia Land Surveyors
Prince George, B.C.
Ph: (604) 562-1196 Fax: 562-3656
F.B.- RA D.L.- 343 REF. NO.- 91727