

Deposited in the Land Title Office at Prince George this 22 day of Nov. 1991.

W.G.G. REGISTRAR

PLAN OF SUBDIVISION OF LOT 62, PLAN 27656, D.L. 754, REMAINDER OF LOTS 1 AND 2, PLAN 23668, DISTRICT LOTS 1605 AND 2003, CLOSED ROAD PLAN 27655, PART OF LOT 4, PLAN 30863, AND PART OF REMAINDER OF E 1/2 OF S 1/2 OF FRACTIONAL SE 1/4 OF D.L. 2003, CARIBOO DISTRICT.

B.C.G.S. 93G.087

Scale: 1 : 1250 (Distances are in metres)

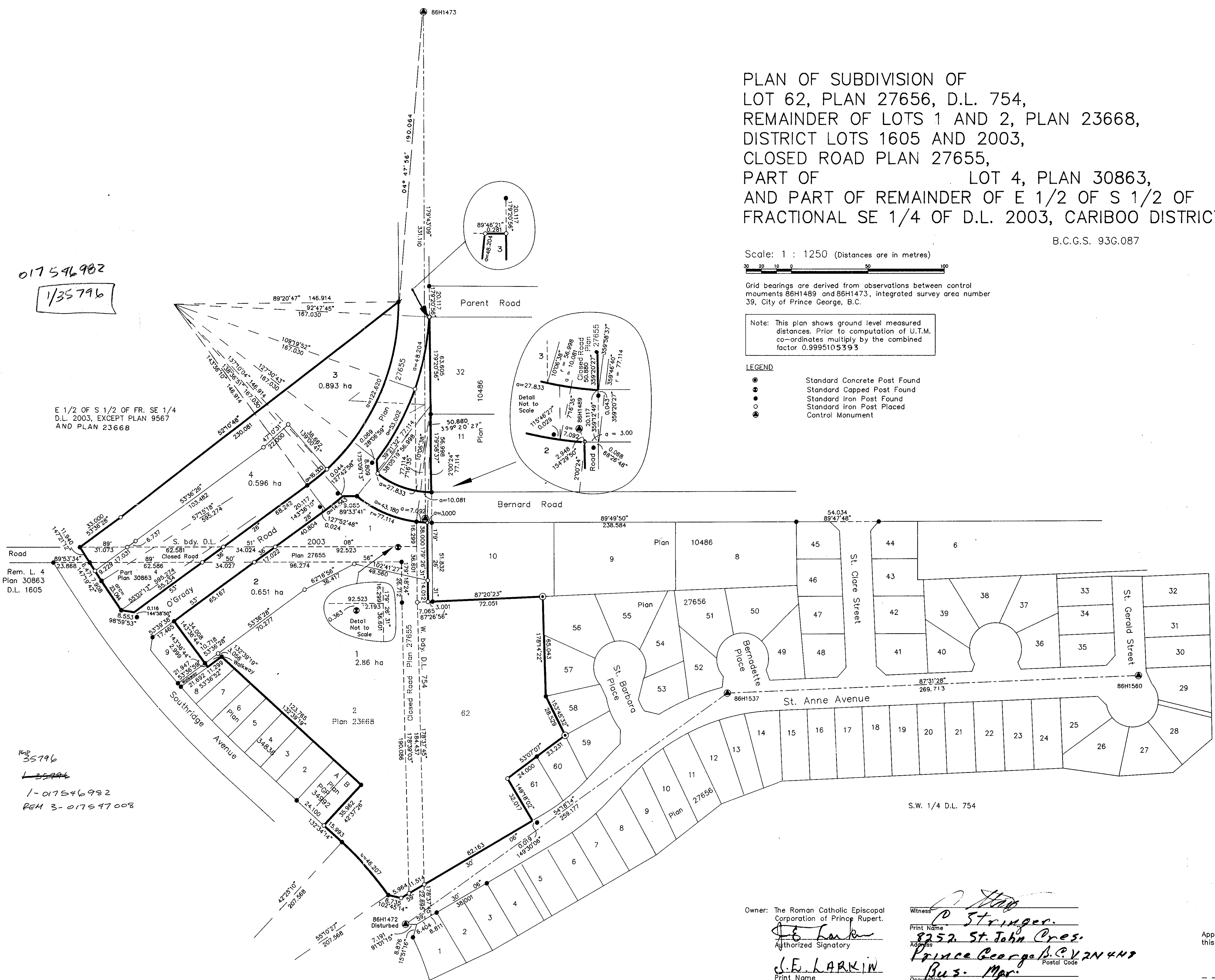


Grid bearings are derived from observations between control monuments 86H1489 and 86H1473, integrated survey area number 39, City of Prince George, B.C.

Note: This plan shows ground level measured distances. Prior to computation of U.T.M. co-ordinates multiply by the combined factor 0.9995105393

- LEGEND: Standard Concrete Post Found, Standard Capped Post Found, Standard Iron Post Found, Standard Iron Post Placed, Control Monument

017546982
1/35796



E 1/2 OF S 1/2 OF FR. SE 1/4 D.L. 2003, EXCEPT PLAN 9567 AND PLAN 23668

Rem. L. 4 Plan 30863 D.L. 1605

PGP 35796
1-017546982
REM 3-017547008

I, Gordon Kilbride, a British Columbia Land Surveyor of Prince George in British Columbia, certify that I was present at and personally superintended the survey represented by this plan and that the survey and plan are correct. The survey was completed on the 5 day of September, 1991.

Gordon Kilbride
Gordon Kilbride, B.C.L.S.

Owner: The Roman Catholic Episcopal Corporation of Prince Rupert.
Authorized Signatory: J.E. LARKIN
Print Name: J.E. LARKIN

Witness: P. Stringer
Print Name: P. Stringer
Address: 8252 St. John Cres. Prince George B.C. V2N 4N9
Occupation: Bus. Man.

Approved under the Land Title Act this 22 day of Nov. 1991
Approving Officer: [Signature]
City of Prince George.

This plan lies within the Fraser Fort George Regional District.

Table with 3 columns: F.B.- ST 23, D.L.- 1605, REF. NO.- 91586. Includes KILBRIDE SURVEYS contact info.