

Deposited in the Land Title Office at Prince George this 20 day of September 1991.

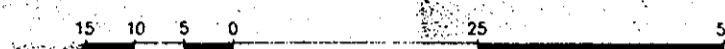
WBA REGISTRAR

264
Plan 22883

PLAN OF SUBDIVISION OF LOT 4, PLAN 22108 AND PART OF LOT A, PLAN 10836, DISTRICT LOT 482, CARIBOO DISTRICT.

B.C.G.S. 936.096

Scale: 1 : 750 (Distances are in metres)



Grid bearings are derived from observations between control monuments 85H1308 and 85H1200, integrated survey area number 39, City of Prince George, B.C.

Note: This plan shows ground level measured distances. Prior to computation of U.T.M. co-ordinates multiply by the combined factor 0.9995100305

LEGEND

- Standard Concrete Post Found
- Standard Iron Post Found
- Standard Iron Post Placed
- Control Monument

I, Dale L. Keown, a British Columbia Land Surveyor of Prince George in British Columbia, certify that I was present at and personally supervised the survey represented by this plan and that the survey and plan are correct. The survey was completed on the 26th day of July 1991.

Dale Keown
Dale L. Keown, B.C.L.S.

Owner: Lot 4, Plan 22108 and Lot A, Plan 10836
City of Prince George

Authorized Signatory
A.M. Martin Acting Mayor

Print Name
A.M. MARTIN, ACTING MAYOR

Authorized Signatory
J.A. Forest Deputy Clerk

Print Name
J.A. FOREST, DEPUTY CLERK

Witness to both
Judy Dix

Print Name
JUDY DIX

Address
132 McLean Drive

Postal Code
Prince George, BC V2M 4R3

Occupation
Administrative Assistant

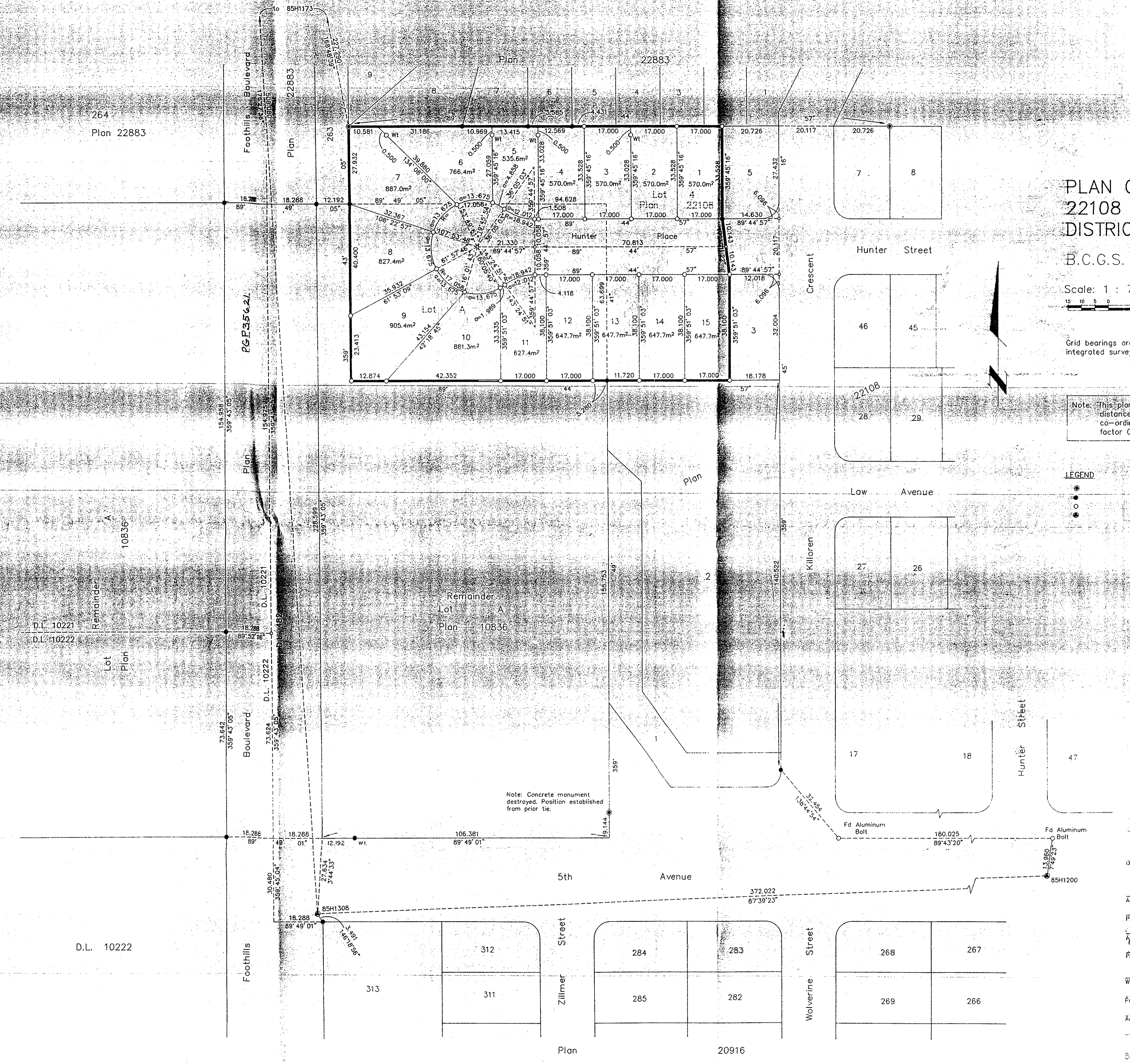
Approved under the Land Title Act this 6th day of August 1991

Cliff
Approving Officer
City of Prince George

This plan lies within the Fraser-Fort George Regional District.

KILBRIDE SURVEYS
British Columbia Land Surveyors
Prince George, B.C.
Ph: (604) 562-1196 Fax: 562-3656

F.B.-SY1 D.L.-482 REF. NO.-91504



Note: Concrete monument destroyed. Position established from prior tie.

D.L. 10222

Plan 20916