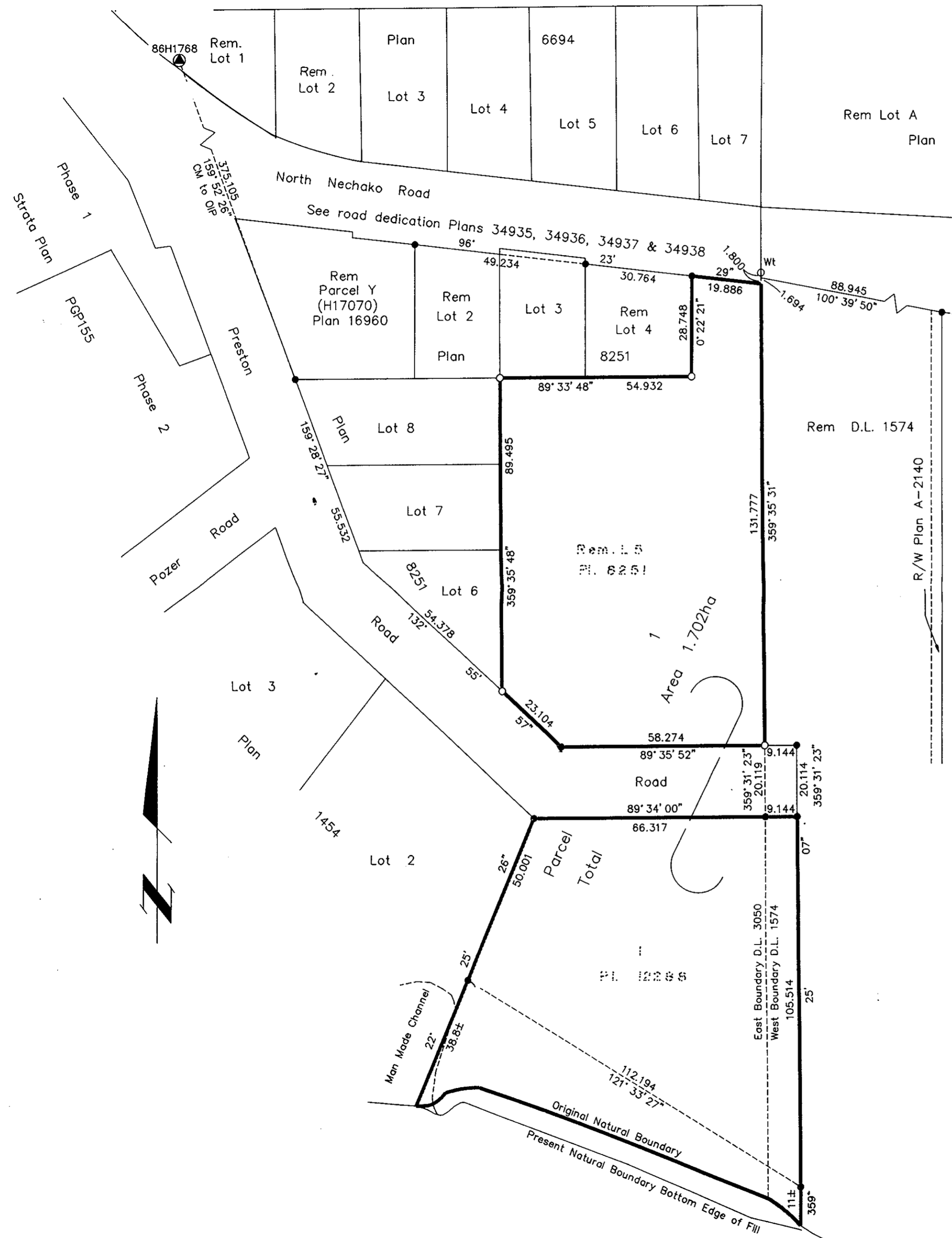


100' E/W GN

PLAN NO. PGP 55585

Deposited in the Land Title Office at Prince George this 26 day of Aug 1991.

REGISTRAR *[Signature]*



REFERENCE PLAN OF CONSOLIDATION OF LOT 1, PLAN 12288 AND LOT 5, PLAN 8251 EXCEPT PLAN 34935, DISTRICT LOTS 3050 AND 1574, CARIBOO DISTRICT.

B.C.G.S. 93G.097

Scale: 1 : 1000 (Distances are in metres)

Grid bearings are derived from observations between control monuments 86H1848 and 86H1738, integrated survey area number 39, City of Prince George, B.C.

- LEGEND**
- Standard Iron Post Found
 - Standard Iron Post Placed
 - ⊙ Control Monument

Note: This plan shows ground level measured distances. Prior to computation of U.T.M. co-ordinates multiply by the combined factor 0.9995100305

I, Dale L. Keown, a British Columbia Land Surveyor of Prince George in British Columbia, certify that I was present at and personally superintended the survey represented by this plan and that the survey and plan are correct. The survey was completed on the 15th day of August, 1991.

[Signature]
Dale L. Keown, B.C.L.S.

This plan lies within the Fraser-Fort George Regional District.

KILBRIDE SURVEYS
British Columbia Land Surveyors
Prince George, B.C.
Ph: (604) 562-1196 Fax: 562-3656

F.B.- RA	D.L.- 1574	REF. NO.- 91415
----------	------------	-----------------