

PLOTTED GE

PLAN OF SUBDIVISION OF
PART OF REMAINDER OF
LOT 2, PLAN 10543,
DISTRICT LOT 2003,
CARIBOO DISTRICT.

B.C.G.S. 93G. 087

Scale: 1 : 750 (Distances are in metres)

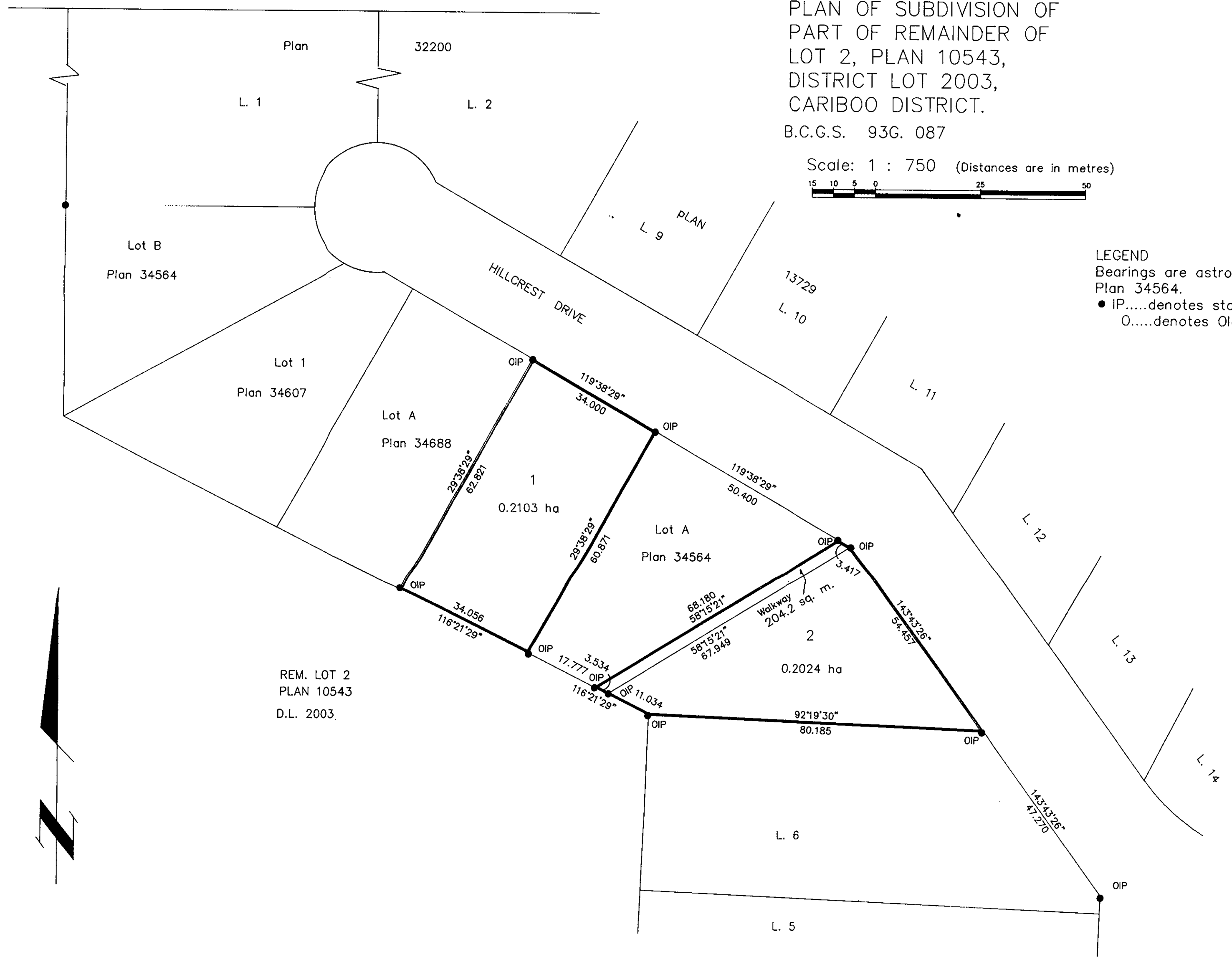


PLAN NO. PGP 35549

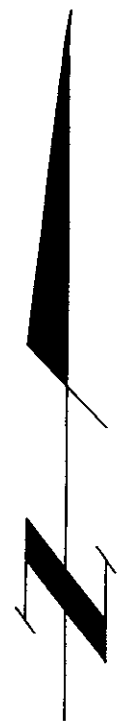
Deposited in the Land Title Office
at Prince George, B.C.
this 2 day of Aug 1991

W.G.G.
Registrar

LEGEND
Bearings are astronomic, derived from
Plan 34564.
● IP.....denotes standard Iron Pin
○.....denotes Old



REM. LOT 2
PLAN 10543
D.L. 2003.



OWNER: The Roman Catholic Episcopal
Corporation of Prince Rupert
LAURENCE TUNBERN
Print Name

Witness
D. Stringer
Print Name
8252, St. John Cres.
Address
Prince George B.C. V2N 4H8
Postal Code
Bus. Mgr.
Occupation

Approved under the Land Title Act
this 2 day of JULY 1991.
C. EANIE OBST
City of Prince George.

I, Gordon Kilbride, a British Columbia Land Surveyor of
Prince George in British Columbia, certify that I was
present at and personally superintended the survey
represented by this plan and that the survey and plan
are correct. The survey was completed on the 28 day
of June , 1991.

Gordon Kilbride
Gordon Kilbride, B.C.L.S.

This plan lies within the Fraser Fort
George Regional District.

KILBRIDE SURVEYS British Columbia Land Surveyors Prince George, B.C. Ph: (604) 562-1196 Fax: 562-3656		
F.B.- SD 19	D.L.- 2003	REF. NO.- 91358