

PGP35405

PLAN OF EASEMENT FOR WATER LINE THROUGH  
 LOT A, PLAN PGP35404  
 DISTRICT LOTS 4221 AND 7634  
 CARIBOO DISTRICT

PLAN No. \_\_\_\_\_

DEPOSITED IN THE LAND TITLE OFFICE  
 AT PRINCE GEORGE, B.C., THIS 11  
 DAY OF June, 1991

SCALE 1 : 750 B.C.G.S. 93G.097

REGISTRAR WGG

BEARINGS ARE ASTRONOMIC, DRIVED FROM THE SOUTHERLY  
 BOUNDARY OF STEVENS DRIVE PLAN

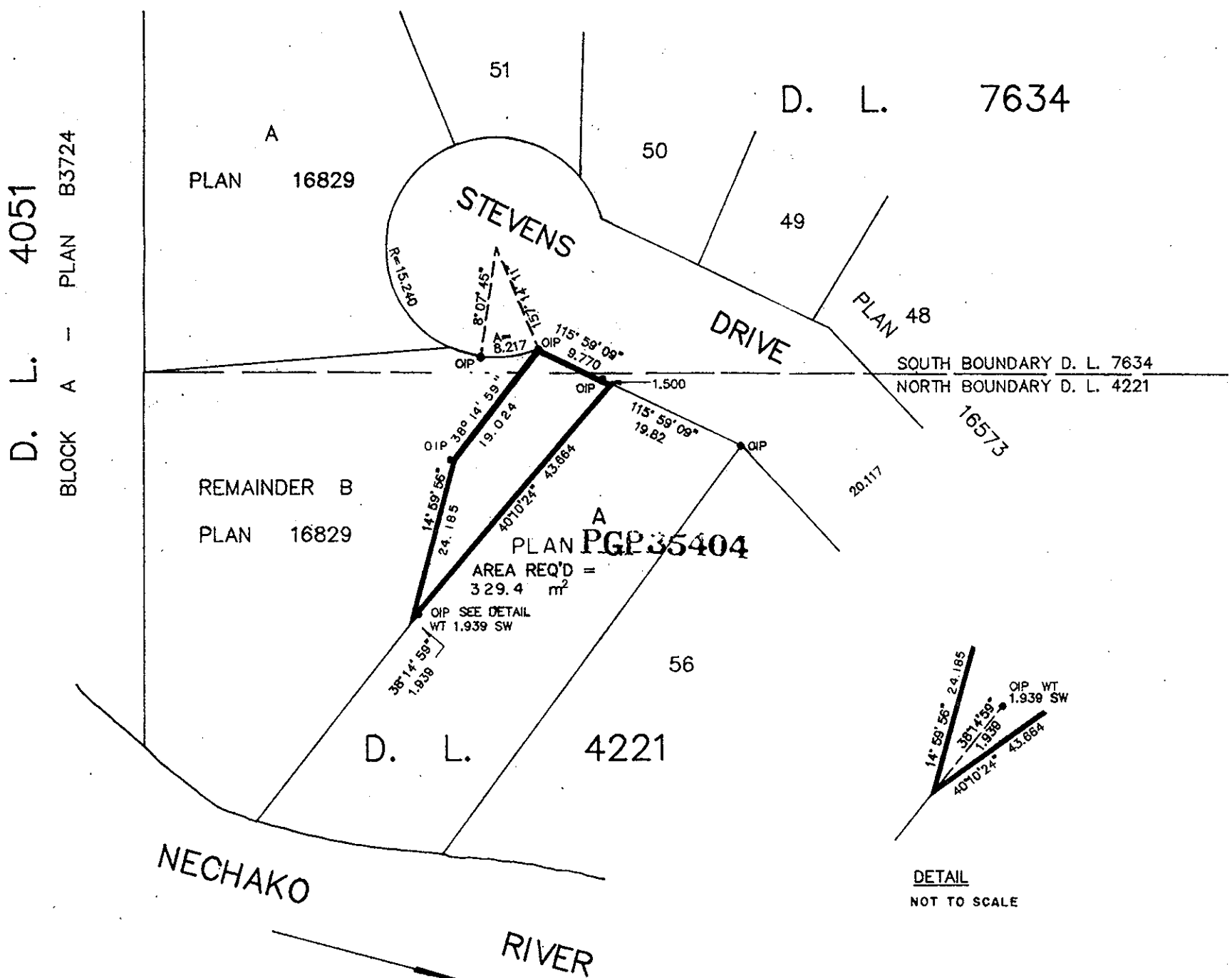
DISTANCES ARE SHOWN IN METRES.

LEGEND

- OIP DENOTES AN OLD IRON PIN FOUND.
- WT DENOTES WITNESS.

BOOK OF REFERENCE

DESCRIPTION	AREA REQUIRED
LOT A, PLAN DISTRICT LOTS 4221 & 7634.	3 29.4 m <sup>2</sup>



DETAIL  
 NOT TO SCALE

THIS PLAN LIES WITHIN THE FRASER-FORT GEORGE REGIONAL DISTRICT.

I, RONALD L. JOHNS, A BRITISH COLUMBIA LAND SURVEYOR, OF PRINCE GEORGE, IN BRITISH COLUMBIA, CERTIFY THAT I WAS PRESENT AT AND PERSONALLY SUPERINTENDED THE SURVEY REPRESENTED BY THIS PLAN AND THAT THE SURVEY AND PLAN ARE CORRECT. THE SURVEY WAS COMPLETED ON THE 12TH DAY OF APRIL, 1990.

*R.L. Johns*  
 R.L. JOHNS, B.C.L.S.

R.L. JOHNS & ASSOCIATES  
 LEGAL AND ENGINEERING SURVEYS  
 P.O. BOX 824  
 PRINCE GEORGE, B.C. V2L 4V3  
 (604) 562-5759