

I hereby certify that this is a true copy of the Official Plan on deposit with the Surveyor General, Ministry of Crown Lands, and numbered Plan 6 Tube 1476

017-675-995

PLAN NO. PGP 35380

ORIGINAL SIGNED BY
PATRICK RINGWOOD
4 Deputy Surveyor General
Victoria, B.C., May 13, 1991.

Deposited in the Land Title Office at Prince George this 4th day of June 1991.

W B

Registrar

REFERENCE PLAN OF PART OF LOT 2, BLOCK 19, PLAN 837, D.L. 2508, CARIBOO DISTRICT. PURSUANT TO SECTION 99(1)(c) OF THE LAND TITLE ACT. B.C.G.S. 93G.096.

Scale: 1: 1000 (All distances are in metres.)



Bearings are astronomic derived from Plan 837.

- IP.....Standard Iron Post.
- PP.....Standard Pipe Post.
- Wt.....Denotes witness.
- O.....Denotes old.

I, Dale Keown, a British Columbia land surveyor, of Prince George, in British Columbia, certify that I was present at and personally superintended the survey represented by this plan, and that the survey and the plan are correct. The survey was completed on the 12 day of October, 1989.

Dale Keown

D. Keown, B.C.L.S.

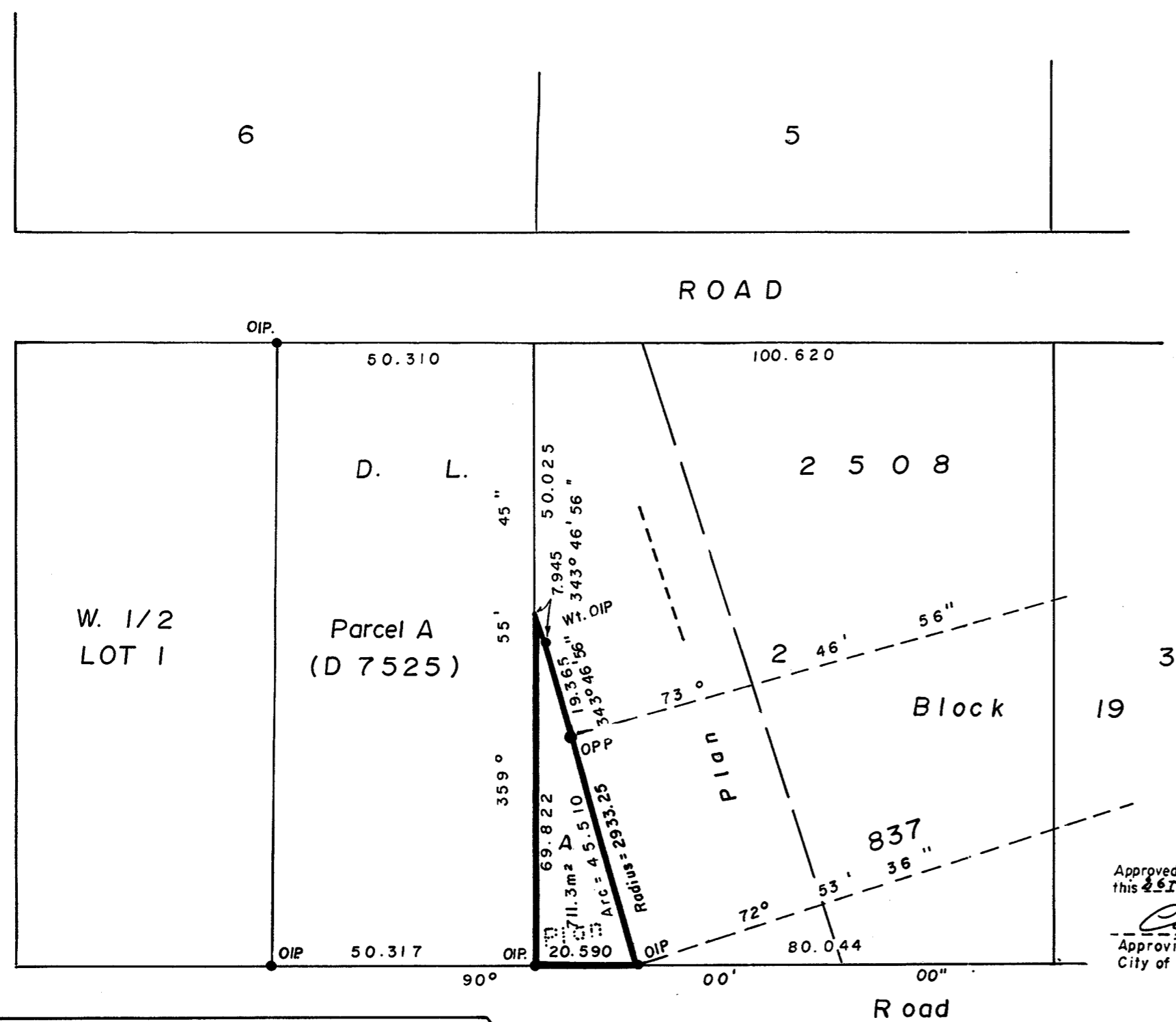
Approved under the Land Title Act this 26th day of April 1991.
Clayton

Approving Officer
City of Prince George.

This Plan lies within the Fraser - Fort George Regional District.

McWilliam Whyte Goble & Associates
B.C. Land Surveyors,
Prince George (604) 562 - 1196
Kamloops - Smithers - Williams Lake - Salmon Arm

REF. NO. 89114-A



Rem. D. L. 2611

Lot A
Plan 32932