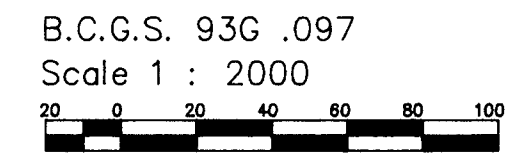


PLAN PGP35091

Deposited in the Land Title office at Prince George, B.C. this 11 day of Jan 1997.

W.G.G.
Registrar

PLAN OF SUBDIVISION OF PART OF THE REMAINDER OF S.1/2 OF BLOCK C OF PLAN 1160, and PART of REMAINDER of PARCEL A (DF A8523), PLAN 1329 DISTRICT LOT 4377 CARIBOO DISTRICT



Distances in metres and decimals thereof.

LEGEND:

Bearings are astronomic, and are derived from west bdy. of road shown as 359°53'50" (plan 18606)

- I.P. ----- denotes B.C.L.S iron post.
- P.P. ----- denotes standard pipe post.
- CIP ----- denotes capped iron post.
- O. ----- denotes old.

Bearings to bearing trees are magnetic.

I, Victor Bartell, a British Columbia Land Surveyor of Prince George in British Columbia, certify that I was present at and personally superintended the survey represented by this plan and that the survey and plan are correct. The survey was completed on the 19 day of October 1990.

Victor Bartell
Victor Bartell, B.C.L.S.
I hereby certify that this is a true copy of the Official Plan on deposit with the Surveyor General, Ministry of Crown Lands, and numbered Plan 25 Tube 1519

[Signature]
Deputy Surveyor General
Victoria, B.C. December 4, 1990.

Approved under the Land Title Act this 1 day of Nov 1990.

[Signature]
Approving Officer, City of Prince George.

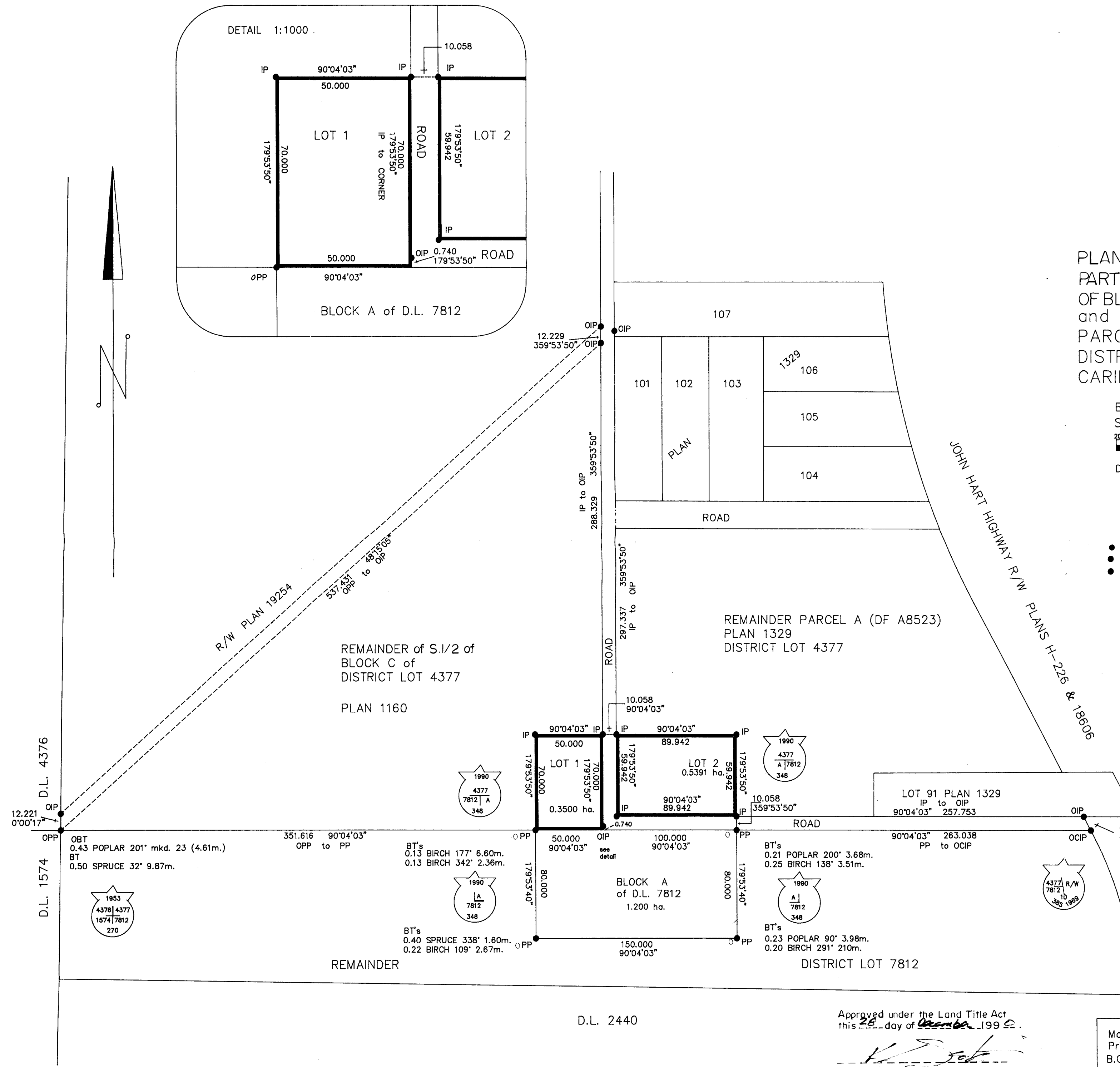
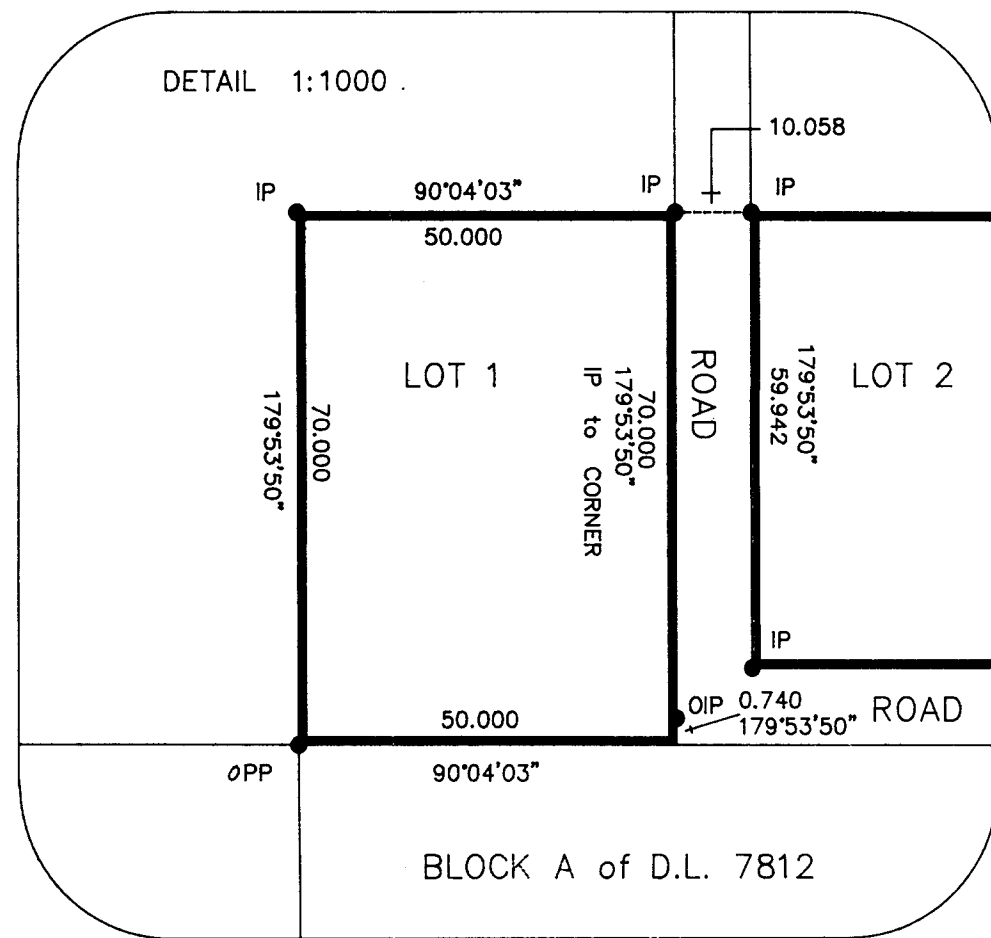
This Plan lies within the Fraser Fort George Regional District

Approved under the Land Title Act this 26 day of December 1990.

[Signature]
Approving Officer
Ministry of Transportation and Highways.

McWilliam Whyte Goble & Associates
Prince George, Kamloops, Smithers, Williams Lake
B.C. LAND SURVEYORS Phone 562-1196

REFERENCE NO. 89311



D.L. 2440