

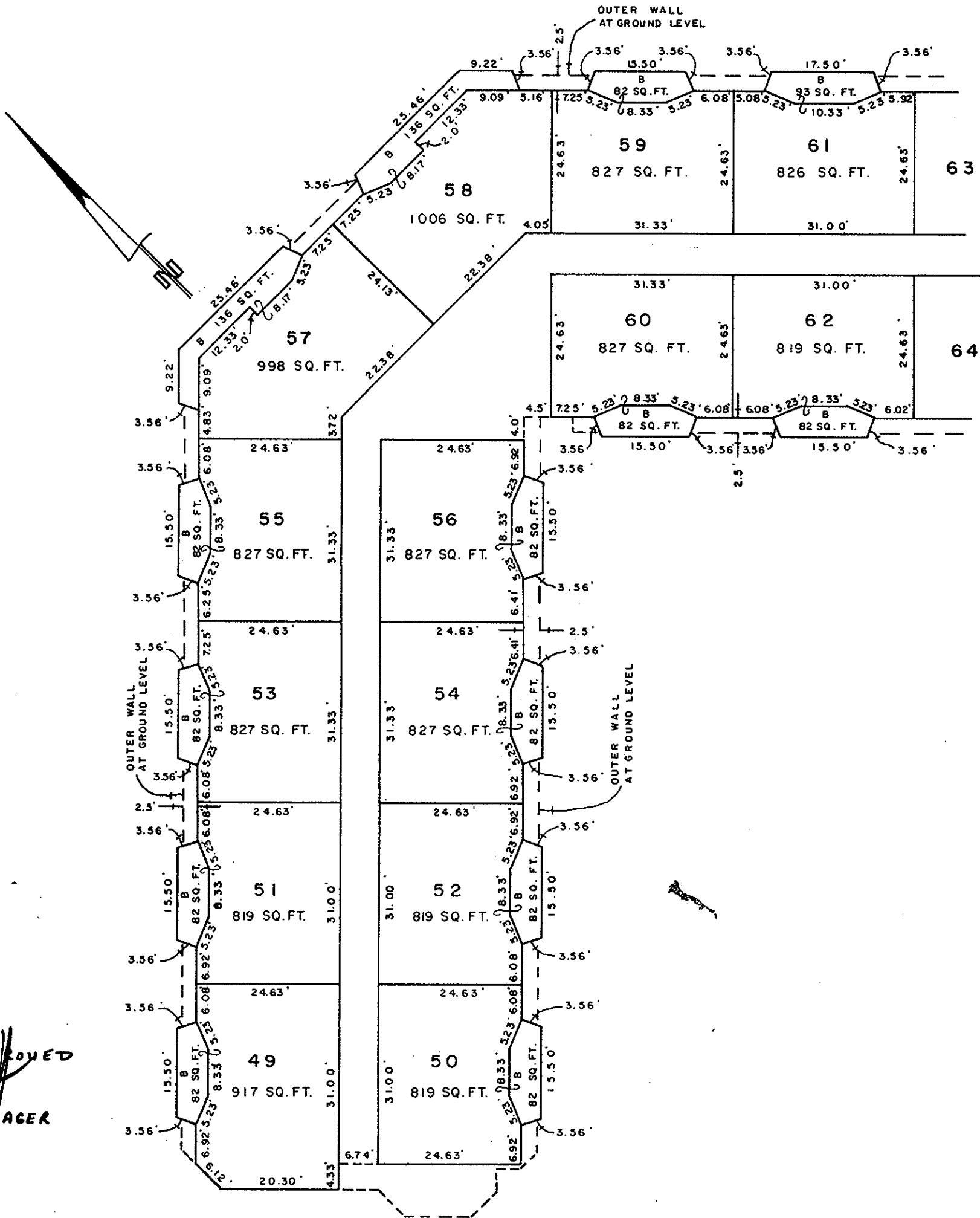
THIRD FLOOR — WEST WING

STRATA PLAN P.G. 6 -----

STRATA LOTS 49 - 62

SCALE: 1" = 20'

THIRD FLOOR — WEST WING



APPROVED
[Signature]
MANAGER

[Signature]
D. A. DUFFY, B.C.L.S.
- 13 day of SEPT., 1974.