

City of Prince George

PHASE 3
STRATA PLAN OF PARCEL 1,
PLAN 33833, DISTRICT LOT
3050, CARIBOO DISTRICT.
B.C.G.S. 93G.097

STRATA PLAN PG155

Deposited and registered in the
Land Title Office at
Prince George, B.C.
this 20 day of Oct. 1993

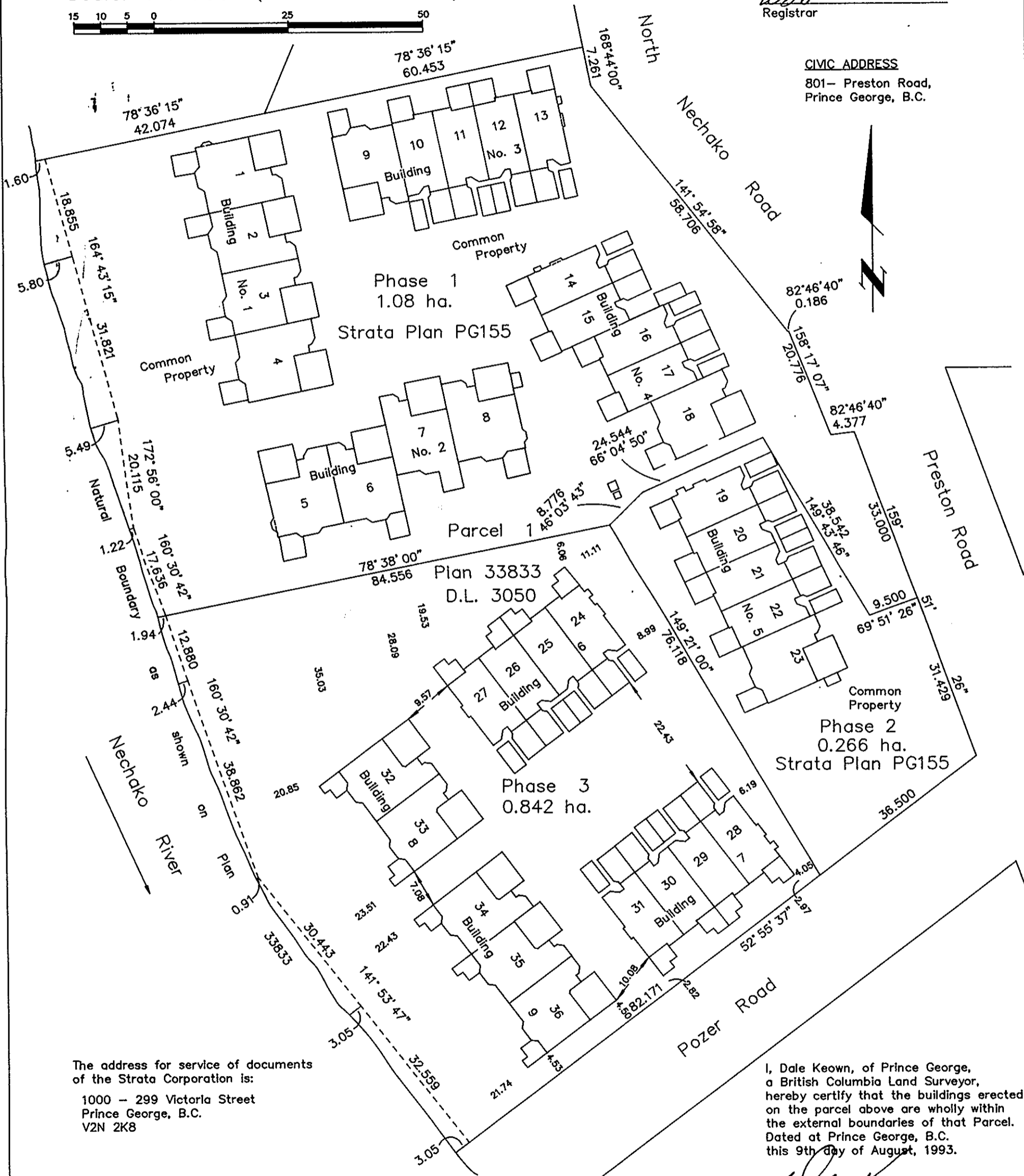
Scale: 1 : 750 (Distances are in metres)



WGA
Registrar

CIVIC ADDRESS

801- Preston Road,
Prince George, B.C.



The address for service of documents
of the Strata Corporation is:
1000 - 299 Victoria Street
Prince George, B.C.
V2N 2K8

LEGEND

- S.L. Denotes strata lot.
- pt Denotes part.
- Park Denotes open parking space.
- Deck Denotes open balcony space.

I, Dale Keown, of Prince George,
a British Columbia Land Surveyor,
hereby certify that the buildings erected
on the parcel above are wholly within
the external boundaries of that Parcel.
Dated at Prince George, B.C.
this 9th day of August, 1993.

Dale Keown
Dale L. Keown, B.C.L.S.

This plan lies within the Fraser-Fort
George Regional District.

KILBRIDE LAND SURVEYING LTD.

British Columbia Land Surveyors

Prince George, B.C.

Ph: (604) 562-1196 Fax: 562-3656

F.B.- TK65

D.L.- 3050

REF. NO.- 930432